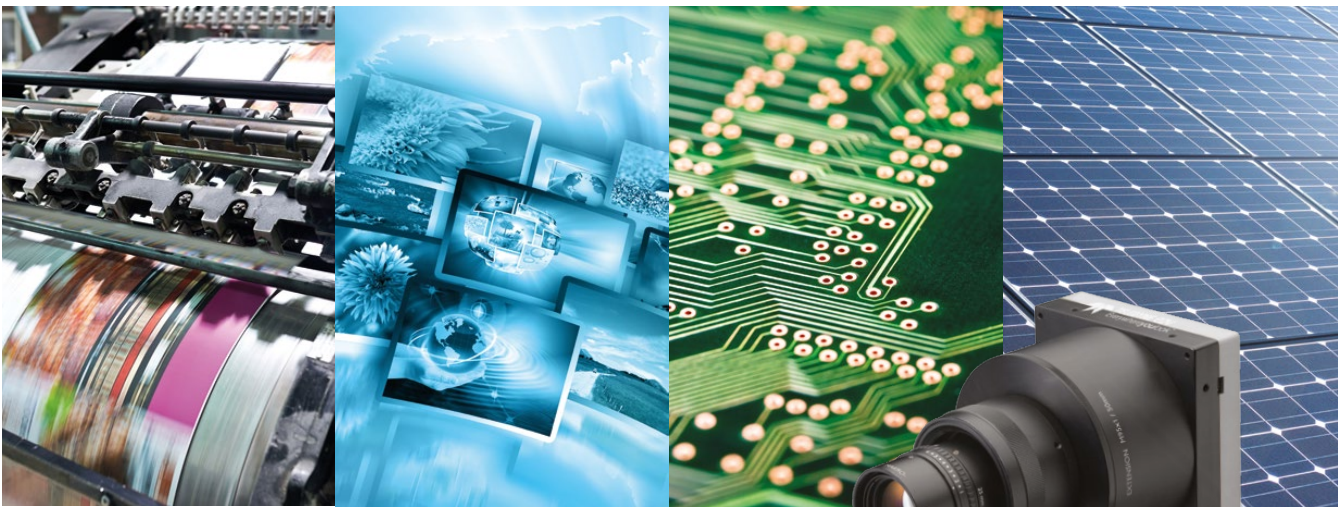


Unleash the potential of your inspection system



Key benefits

- 16,384 pixels, 5µm x 5µm pixel size
- Line rate up to 50kHz
- Bit depth: 8 or 12 bits
- Flat field correction
- Look up table
- Better inspection quality with single shot acquisition
- Improved robustness to non-axial motion
- Easy calibration and alignment of the camera
- Easy multi-light timing calibration
- Cost effective equipment
- Flexible optics choices and costs: F-mount, M42 mount compatible
- Power consumption below 13W
- CameraLink interface

Applications

- Flat panel Display Inspection
- PCB inspection
- Solar cell Inspection
- Glass inspection
- Print inspection
- Raw material
- Microscopy
- Industrial inspection



Teledyne e2v's new UNiiQA+ family of line scan cameras have been specifically designed to bring affordable, flexible and simple high speed solutions to your current inspection or sorting system. The broad choice of UNiiQA+ cameras offer a 'one-stop-shop' solution at multiple price points in order to accommodate any performance requirement. The 16k high resolution model is specially designed for tiny detail detection or for covering large areas.

Sensor characteristics

Resolution – pixels	16,384
Pixel size – square μm	5
Maximum line rate – kHz	50
Number of active lines	1
Camera interface	CameraLink

Functionalities

Maximum analogue gain – dB	12
Offset correction – LSB	-4,096 to +4,095
Trigger mode	Timed (Free run) and triggered (Ext Trig, Ext ITC)
Flat field correction	yes
Scan direction	yes

Typical performances

Bit depth – bits	8/12
Spectral range – nm	300 – 1,100
Dynamic range – dB	67
PRNU – %	<3
Non linearity – %	<1

Mechanical and electrical interface

Size – W x H x L mm	100 x 156 x 36
Lens mount	F, T2, M42 x 1
Sensor alignment – μm	± 100
Sensor flatness – μm	± 35
Power supply – V	Single 12 to 24
Power consumption – W	<13

Connectors

Control and data	2 x MDR CameraLink
Power	Hirose 6 pins

General features

Operating temperature – $^{\circ}\text{C}$	0 to 55
Storage temperature – $^{\circ}\text{C}$	-40 to 70
Regulatory	CE, FCC and RoHs compliant

Part number	No. of lines	Pixel size ($\mu\text{m} \times \mu\text{m}$)	Interface	Max line rate
EV71YC1MCL1605-BA2	1	5 x 5	CameraLink	50