

▲ A3135M/CG000E

- 1Gbps Ethernet interface , max 100m transmission
- 128MB on-board frame buffer
- Support multiple image data formats
- Conform to CE, FCC, RoHS certifications
- Software trigger/Hardware trigger/Free run mode
- Compatible with GigE Vision V2.0 protocol and GenICam standard



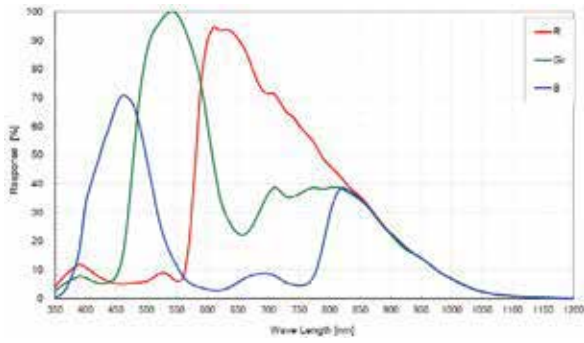
Specification

| Model | Sensor | Sensor type | Shutter | Resolution | Frame rate (fps) | Bit depth | Interface | Mono/Color | Pixel size (μ m) | Sensor size |
|-------------|-------------|-------------|---------|------------|--------------------|-----------|-----------|------------|--------------------|-------------|
| A3135MG000E | RJ33J4CA0DT | CCD | Global | 1280x960 | 30 | 14 | GigE, POE | Mono | 3.75x3.75 | 1/3" |
| A3135CG000E | RJ33J3CA0DT | CCD | Global | 1280x960 | 30 | 14 | GigE, POE | Color | 3.75x3.75 | 1/3" |

| Model | A3135MG000E | A3135CG000E |
|-------------------|---|---|
| Effective Pixels | 1.2MP | |
| SNR | >38dB | |
| Dynamic Range | 63dB | |
| GPIO | 6 pin Hirose: 1 Opto-isolated input, 1 Opto-isolated output, 1 configurable input/output without opto isolation | |
| Image Format | Mono8/10/10Packed | BayerGB8/10/10Packed/12/Packed, YUV422Packed Mono8, BayerRG8/10/10Packed/12/Packed |
| Binning | Support | -- |
| Gain | X1~X32 | |
| Gamma | Range from 0 to 4, support LUT | |
| Exposure Time | 1μs~1s | |
| Trigger Mode | Software trigger/Hardware trigger/Free run mode | |
| Image Buffer | 64MB | |
| User Setting | Support two sets of user-defined configurations | |
| Dimensions | 29mmx29mmx42mm(not including lens mount and rear case connector) | |
| Weight | 88g | |
| Power Supply | POE/DC power supply by Hirose connector, with voltage range from 6V to 26V | |
| Power Consumption | 12V≈3.2W | |
| Lens Mount | C | |
| Temperature | Storage temperature: -30° C~ + 80° C; Operation temperature: -30° C~+50° C | |

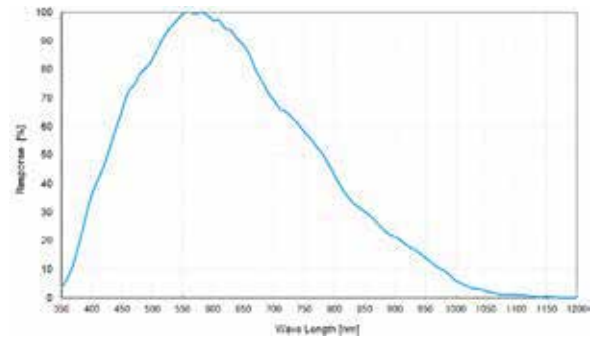
Spectrogram

A3135CG000E



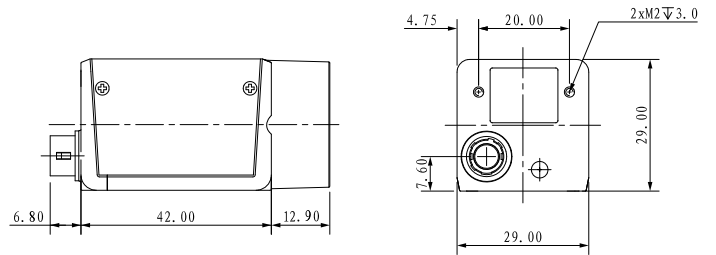
Quantum Efficiency Curve for Mono and Color

A3135MG000E

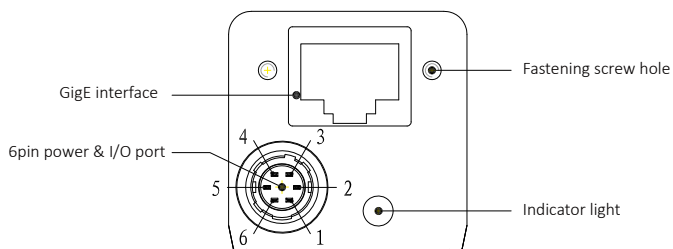


Quantum Efficiency Curve for Mono Sensor

Dimensions



IO Interface Instruction



| Pin | Signal | Description |
|-----|--------|------------------------------|
| 1 | Power | DC 6V-26V input |
| 2 | Line1 | Opto-isolated input |
| 3 | Line2 | Configurable IO input/output |
| 4 | Line0 | Opto-isolated output |
| 5 | IO GND | Opto-isolated ground |
| 6 | GND | Ground |