

▲ A5131M/CG75E

- 1Gbps Ethernet interface , max 100m transmission
- 128MB on-board frame buffer
- Support multiple image data formats
- Conform to CE, FCC, UL and RoHS certifications
- Software trigger/Hardware trigger/Free run mode
- Compatible with GigE Vision V2.0 protocol and GenICam standard



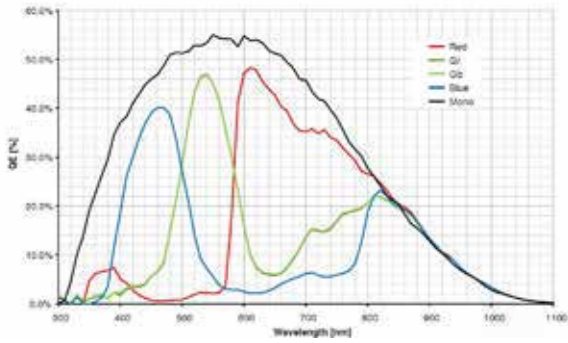
Specification

| Model | Sensor | Sensor type | Shutter | Resolution | Frame rate (fps) | Bit depth | Interface | Mono/Color | Pixel size (μm) | Sensor size |
|------------|-------------|-------------|---------|-------------|------------------|-----------|-----------|------------|-----------------|-------------|
| A5131MG75E | PYTHON 1300 | CMOS | Global | 1280 x 1024 | 75 | 10 | GigE, POE | Mono | 4.8 x 4.8 | 1/2" |
| A5131CG75E | PYTHON 1300 | CMOS | Global | 1280 x 1024 | 75 | 10 | GigE, POE | Color | 4.8 x 4.8 | 1/2" |

| Model | A5131MG75E | A5131CG75E |
|-------------------|--|---|
| Effective Pixels | 1.3MP | |
| SNR | >38dB | |
| Dynamic Range | 60dB | |
| GPIO | 6 pin Hirose: 1 Opto-isolated input, 1 Opto-isolated output, 1 configurable input/output without opto isolation | |
| Image Format | Mono8/10/10Packed | BayerGB8/10/10Packed, YUV422Packed Mono8, BayerRG8/10/10Packed |
| Binning | Support | -- |
| ROI | Support | |
| Gain | X1~X32 | |
| Gamma | Range from 0 to 4, support LUT | |
| Exposure Time | 1μS~1S | |
| Trigger Mode | Software trigger/Hardware trigger/Free run mode | |
| Image Buffer | 64MB | |
| User Setting | Support two sets of user-defined configurations | |
| Dimensions | 29mmx29mmx42mm(not including lens mount and rear case connector) | |
| Weight | 88g | |
| Power Supply | POE/DC power supply by Hirose connector, with voltage range from 6V to 26V | |
| Power Consumption | 12V≈3.4W | |
| Lens Mount | C | |
| Temperature | Storage temperature:-30° C~ + 80° C; Operation temperature:-30° C~+50° C | |

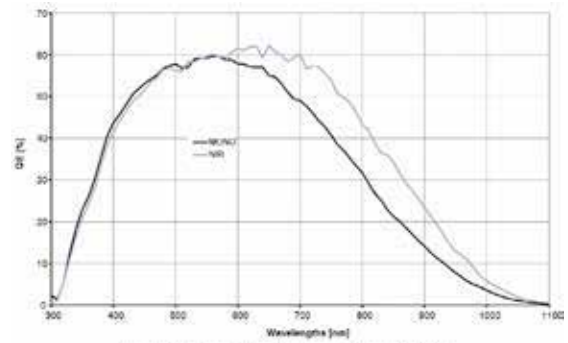
Spectrogram

A5131CG75E



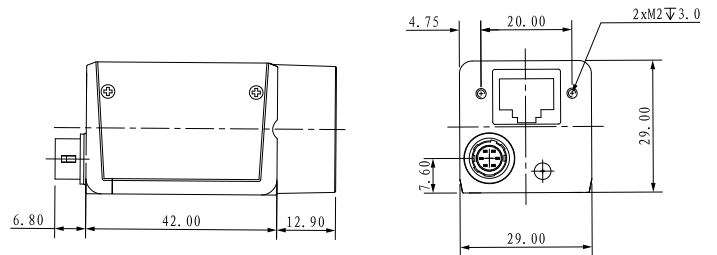
Quantum Efficiency Curve for Mono and Color Sensor

A5131MG75E

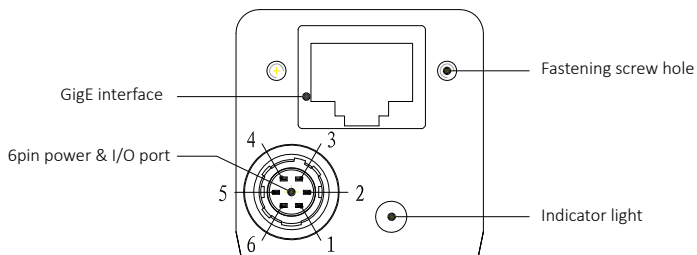


Quantum Efficiency Curve for Mono Sensor

Dimensions



IO Interface Instruction



| Pin | Signal | Description |
|-----|--------|------------------------------|
| 1 | Power | DC 6V-26V input |
| 2 | Line1 | Opto-isolated input |
| 3 | Line2 | Configurable IO input/output |
| 4 | Line0 | Opto-isolated output |
| 5 | IO GND | Opto-isolated ground |
| 6 | GND | Ground |