

CVB RealSense TL Application Note

Using the Intel RealSense with the CVB RealSense TL

Version 1.0.0 from 21/02/2019

Author: Jon Vickers

Abstract

STEMMER IMAGING has produced a GenICam Transport Layer (TL) that allows the Intel RealSense 3D camera to be detected and used in the same way as a GenICam camera (such as GigE Vision or USB3 Vision). This application note shows what is needed to use it.

Copyright

Copyright © 2018 STEMMER IMAGING AG, Puchheim.

All rights reserved and subject to change.

STEMMER IMAGING, Common Vision Blox, Windows, Visual Basic, Visual C++, C++Builder, Visual Studio.net, Visual C#, Delphi are registered trademarks.

All rights to this manual are the property of STEMMER IMAGING AG, Puchheim/Germany. It may not be reproduced or copied in printed, electronic or photographic form or translated into another language, either in whole or in part, without the written agreement of STEMMER IMAGING AG.

CVB RealSense TL

1. Installation Requirements

Some kind of a CVB installation and licence is required to license the TL. If your vision application is using CVB already, your licence and installation already provides the basis. All that is needed is the CVB RealSense TL installer – the 32 and 64b Windows versions can be found on the CVB forum here:

- <https://forum.commonvisionblox.com/t/common-vision-blox-drivers>

If you intend to use a different vision software, it is necessary to have a basic CVB installation, a CVB licence of some kind and the CVB RealSense TL installer:

- The smallest CVB installer is here (64b Windows version):
<https://forum.commonvisionblox.com/t/common-vision-blox-for-64-bit-windows/368#heading--camsuite-runtime>
- CVB RealSense TL installer: <https://forum.commonvisionblox.com/t/common-vision-blox-drivers>
- A CVB licence can be one of the following types:
 - CameraSuite licence. If the system also has GenICam cameras purchased from STEMMER IMAGING, these are provided with a basic free CVB licence, tied to the MAC address (GigE Vision) or serial number (USB3 Vision). While the cameras are visible to the software, the TL is licensed.
 - Dongle. A hardware USB dongle. Please contact STEMMER IMAGING for a price.
 - Node-locked licence. This is locked to the *system hardware*, for example the CPU serial number and NIC's MAC address. Again, this must be purchased via STEMMER IMAGING.

Support is generally provided in the CVB forum: <https://forum.commonvisionblox.com>.

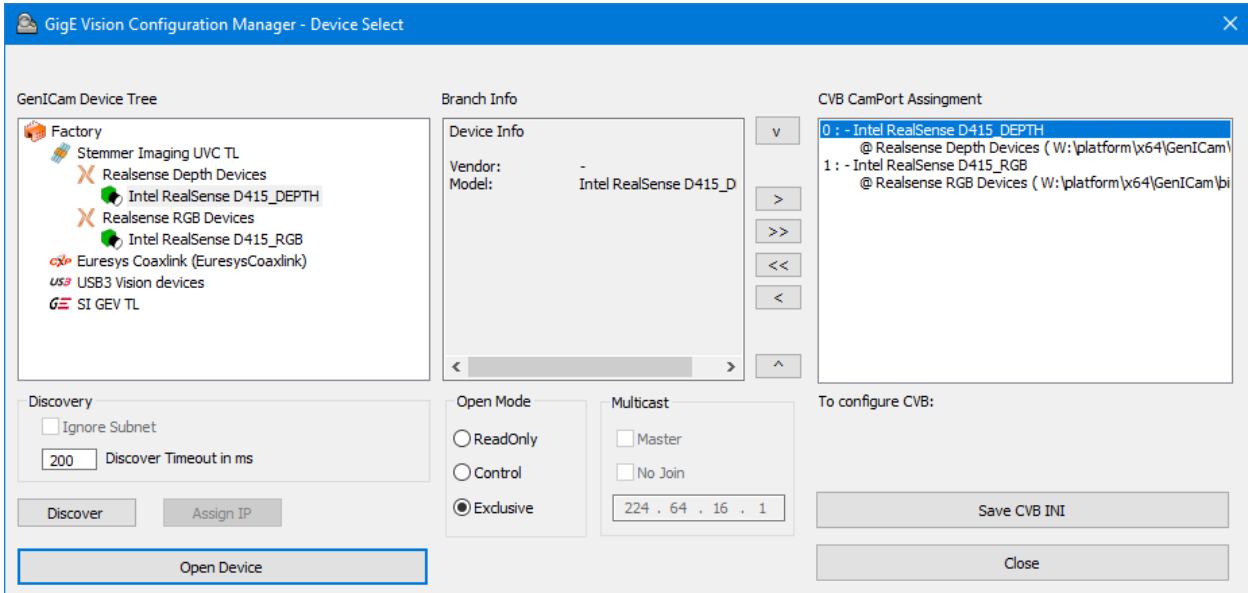
2. What does the CVB RealSense TL provide?

The TL allows discovery and control of an Intel RealSense device in exactly the same way as a GenICam camera, such as a USB3 Vision camera.

2.1 Discovery

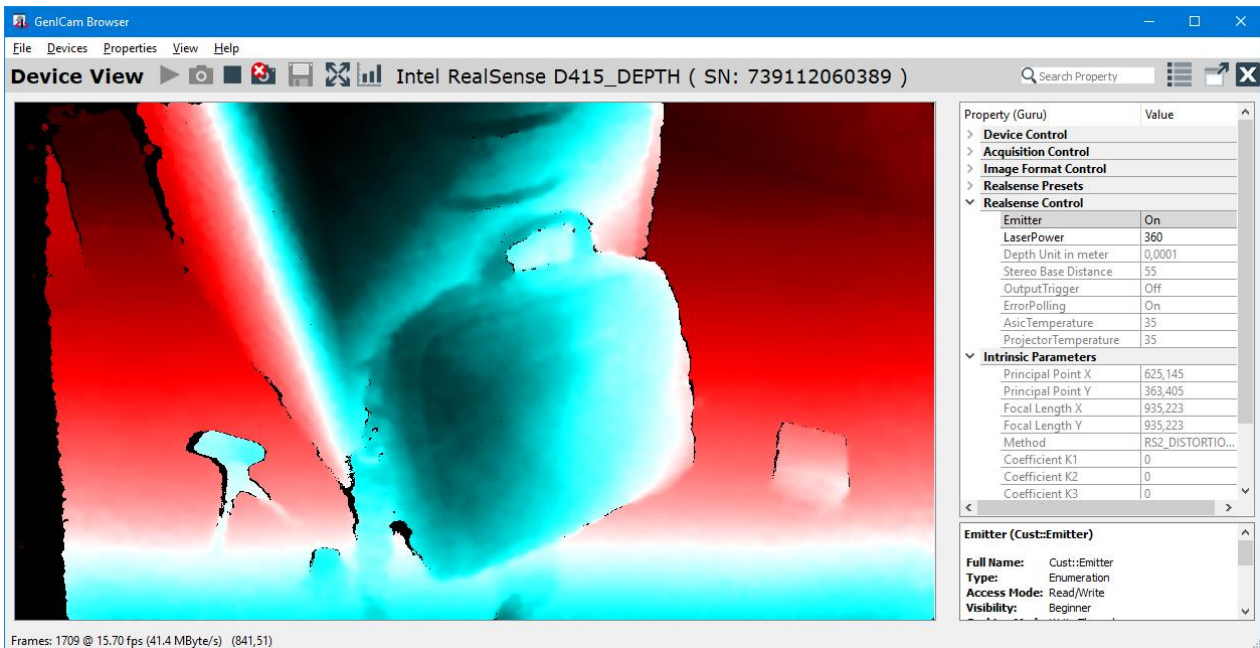
A RealSense may be discovered twice if it contains both a depth camera and an RGB camera – these are found independently by the TL:

CVB RealSense TL



2.2 Control

Like other GenICam devices, control is via a NodeMap or a grid of features:



Jon Vickers, February 2019