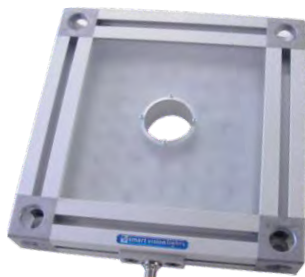




product features



- 40, 1mm² Die High Current LEDs
- Different Lenses Available
- Conversion Adapters For Different Cameras
- PNP and NPN Strobe Input
- Continuous Operation or Strobe Mode
- Analog Intensity 0-10VDC Signal



product specifications

Electrical Input	24 VDC +/- 5%
Current	Max. 1.5A
Wattage	Max. 36W
Strobe Input	PNP ▶ +4VDC or greater to activate. NPN ▶ GND (<1VDC) to activate
PNP Line	3.7mA @ 3VDC 6.2mA @ 5VDC 12.6mA @ 10VDC 30.4mA @ 24 VDC
NPN Line	22mA @ Common (0VDC)
Continuous Mode	Light will be in continuous mode by leaving signal on strobe input active
Analog Intensity	The output is adjustable from 10 -100% of brightness by a 0 -10 VDC signal
Connection	5 pin M12 connector
Lifespan	100,000 hrs
IP Rating	IP50
Weight	~1570g
Certification	CE and RoHS certified
IEC 62471 Rating	See page 3



product number key

RL200 – XXX – X* —» Part Number Key

Product Family:
Ring Light
RL200

Color:
470 – Blue
505 – Cyan
530 – Green
625 – Red
850 – IR
WHI - White

Lenses:
N-Narrow
L - Line

* Lights come standard with Wide lenses

CE and RoHS Compliant



warnings



Attention

Please note that the power requirements are up to 1.5A at 24VDC. Failure to supply light with up to 1.5A can result in non-repeatable lighting. Contact Smart Vision Lights for more information.



wiring configuration

If Analog 0-10 VDC is not used to control light intensity;
+VDC (24VDC) must be connected to Analog Input - Jumper pin 5 to pin 1

Pin	Function	Signal	Wire Color
1	Power In	+24VDC	BROWN
2	NPN	Sinking Signal	WHITE
3	GND	Ground	BLUE
4	PNP	Sourcing Signal	BLACK
5	Intensity Control	0-10VDC	GREY †

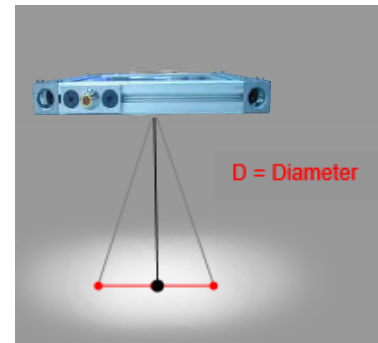
† Some cables use green with yellow stripe for 0-10V adjustment



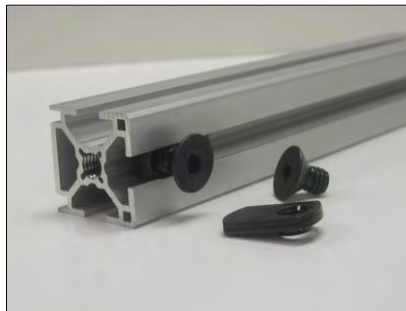
optical performance

RL200-XXX-W

Working Distance mm (inches)	Pattern (80%-100% measured intensity) mm (Inches)
.5m (20")	21cm(8") D
1m (40")	35cm(14") D
Typical output performance	
Distance = .5 meter	Illumination (Lux)
	20000
<i>Illumination measurement taken on White Lights – 6500K</i>	



mounting & accessories



- Standard T-nut with 5/16-18x1/2" bolt



risk group

According to IEC 62471:2006. Full documentation upon request.

Notice

Exempt Group: No photo biological hazard to eyes or skin even for continuous, unrestricted use.
Applicable for wavelengths: 625 and 850.

Caution

Risk Group 1: Possibly hazardous optical radiation emitted from this product. Do not stare at operating lamp. May be harmful to eye. Safe for most applications except prolonged exposures.
Applicable for wavelengths: 470, 505, 530, and WHI.