



## product introduction

The SXP30 Series Projector Light offers the most intense projected pattern offered from an LED. The 9mm<sup>2</sup> die size emits 9x the intensity as a standard high output LED. The housing is constructed of finned 6061-T6 aluminum and designed to dissipate as much heat as possible therefore allowing the LED to be run at a much higher current than the standard 1mm<sup>2</sup> die LED's. Multiple interchangeable pattern styles are available along with optional custom patterns. The SXP30 Series is able to project a thinner and more define pattern of light compared to laser projectors making the SXP30 a more accurate light.



## product features



- 5 Pin M12 Quick Disconnect
- Multiple interchangeable patterns
- Driver built in – No External wiring to a driver
- PNP and NPN Strobe input
- Continuous operation or Strobe mode
- Analog intensity 0-10VDC signal
- One, 9mm<sup>2</sup> Die High Current LED



## product specifications

<b>Electrical Input</b>	24 VDC +/- 5%
<b>Current</b>	Max. 600mA
<b>Wattage</b>	Max. 15W
<b>Strobe Input</b>	PNP ► +3VDC or greater to activate.   NPN ► GND (<1VDC) to activate
<b>PNP Line</b>	3.7mA @ 3VDC   6.2mA @ 5VDC   12.6mA @ 10VDC   30.4mA @ 24 VDC
<b>NPN Line</b>	22mA @ Common (0VDC)
<b>Yellow Indicator LED</b>	LED Strobe Indicator ON = Light Active
<b>Green Indicator LED</b>	ON = Power
<b>Continuous Mode</b>	Light will be in continuous mode by leaving signal on strobe input active
<b>Analog Intensity</b>	The output is adjustable from 10 -100% of brightness by a 0 -10 VDC signal
<b>Connection</b>	5 pin M12 connector
<b>Lifespan</b>	100,000 hrs
<b>Ambient Temp.</b>	-20° - 50° C (-4° - 122° F)
<b>IP Rating</b>	IP50
<b>Weight</b>	~413g
<b>Compliances</b>	CE and RoHS
<b>IEC 62471 Rating</b>	See page 4



## product number key

# SXP30 – XXX

# —» Part Number Key

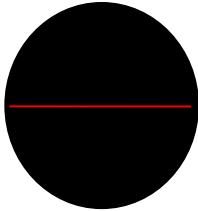
Product Family:  
Projector Light  
SXP30

Color:  
470, 530, 625, 850  
& WHI (White)

CE and RoHS Compliant

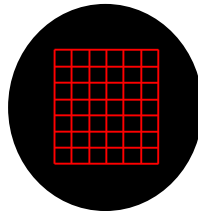
Standard patterns are available and custom patterns can be etched. Patterns are interchangeable.

Line



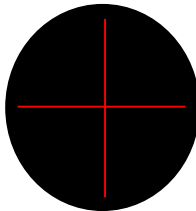
SP-PO-1LN

Grid



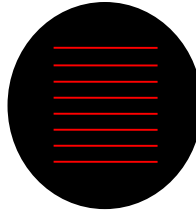
SP-PO-GD

Cross



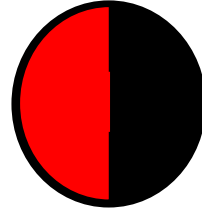
SP-PO-CH

Multiple Line



SP-PO-8LN

Half Sphere



SP-PO-HS



## warnings

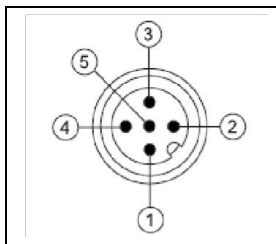


### Attention

Please note that the power requirements are 600mA at 24VDC. Failure to supply light with 600mA will result in non-repeatable lighting. Contact Smart Vision Lights for more information.



## wiring configuration



Pin	Function	Signal	Wire Color
1	Power In	+24VDC	BROWN
2	NPN	Sinking Signal	WHITE
3	GND	Ground	BLUE
4	PNP	Sourcing Signal	BLACK
5	Intensity Control	0-10VDC	GREY †

† If 0-10VDC is not used to control light intensity; +24VDC (24VDC) must be connected to Analog Input.

† Some cables use green with yellow stripe for 0-10V adjustment



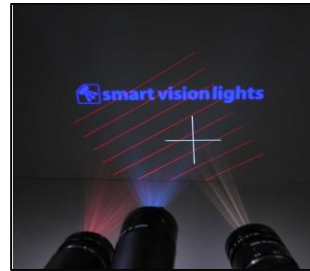
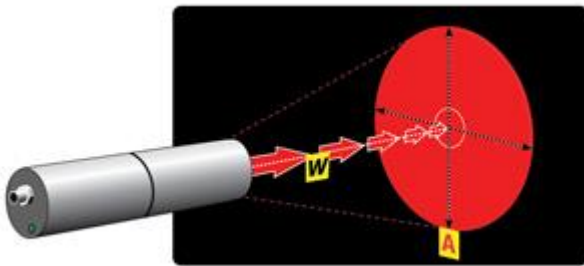
## optical performance

A = Diameter of Area

W = Working Distance

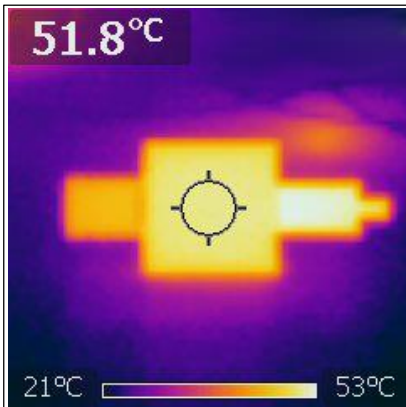
	100mm	150mm	200mm	300mm	400mm	500mm	600mm	750mm	1000mm	1500mm	2000mm
60mm			25			50					
100mm	8	12	16	25	35	35	50	50			
150mm	6	8	12	16	25	25	35	35	50	75	
200mm		6	8	12	16	16	25	25	35	50	100
300mm			6	8	12	12	16	16	25	35	50
400mm				6	8	8	12	12	16	25	35
500mm					6		8	12	16	25	25

Number in box represents the focal length of lens (example - 6 is a 6mm focal length lens)



## thermal analysis

In constant operation the housing on SXP30 series lights will run at 50 C° in an ambient temperature of 25 C°.



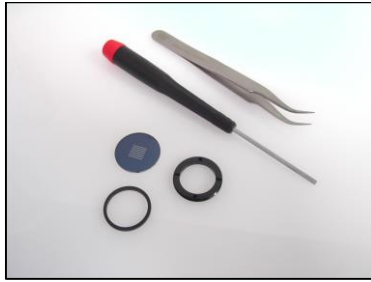
SXP30 series aluminum enclosures designed to transfer heat away from the high power LED.

Additional heat sinking recommended in ambient air temperatures above 25°C.

Thermal image taken after 2 hours of continuous ON operation at 25°C.



## pattern replacement



Tools: small screwdriver or tweezers



Pattern Retaining Ring



Retainer Ring

Pattern

### Removal of Retaining Ring

Screwdriver or Tweezers to remove retaining ring. Retaining Ring will turn Clockwise to install and Counter-Clockwise to remove. There are 2 small holes and 2 slots in ring to install/remove.

### Arrangement of Retainer Ring and Pattern.



Retainer Ring on top holding pattern.

Pattern - Remove and Replace

Master Retainer Ring located in base of Projector.  
**DO NOT REMOVE!**



## risk group

According to IEC 62471:2006. Full documentation upon request.

### Notice

Exempt Group: No photobiological hazard to eyes or skin even for continuous, unrestricted use.  
Applicable for wavelengths: 625 and 850.

### Caution

Risk Group 1: Possibly hazardous optical radiation emitted from this product. Do not stare at operating lamp. May be harmful to eye. Safe for most applications except prolonged exposures.  
Applicable for wavelengths: 470, 530, and WHI.