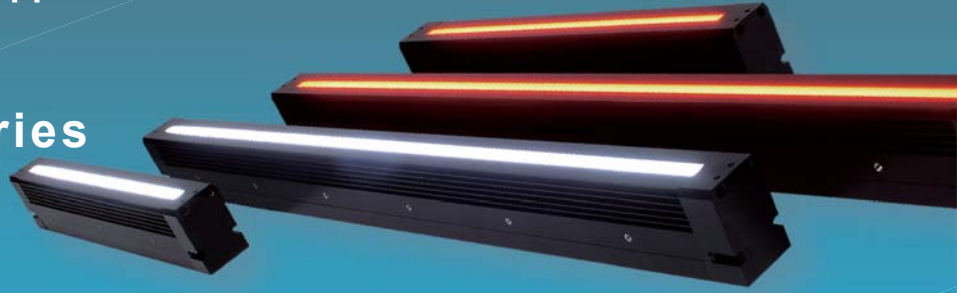


LED Light Units for Line Scan Applications

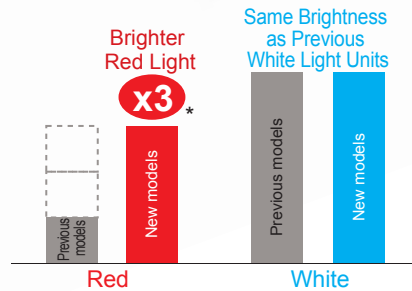
Patented Design Registered

# HLND Series



Main Features Inherited from Previous Models

<b>LED Color:</b> White or Red	<b>Compact:</b> 35-mm Width
<b>Saves Space</b>	<b>Max. Length:</b> 2,700 mm



Housing Sizes, Mounting Holes, Power Consumption

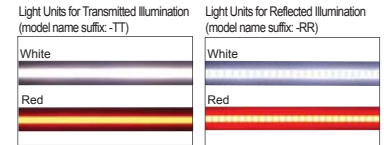
**No Changes**

\* According to CCS comparison with previous CCS models.

● Changes to Model Names

The model names have changed. Select models from the lists on the right.

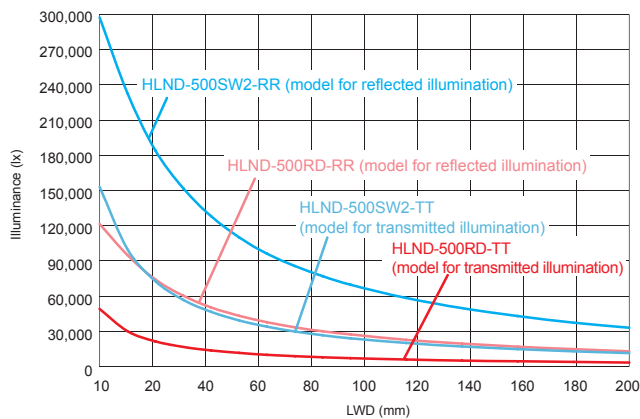
	Previous models	New models
White	For transmitted illumination: HLND-□□□SW2-T	HLND-□□□SW2-TT
	For reflected illumination: HLND-□□□SW2-R	HLND-□□□SW2-RR
Red	For transmitted illumination: HLND-□□□RD-T	HLND-□□□RD-TT
	For reflected illumination: HLND-□□□RD-R	HLND-□□□RD-RR



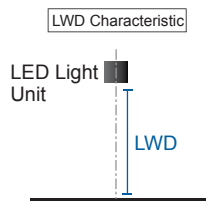
**Technical Data** Typical Examples

**Illuminance –LWD Characteristic–**

\* LWD: Light Working Distance (the distance from the emitting surface of a Light Unit to the workpiece)

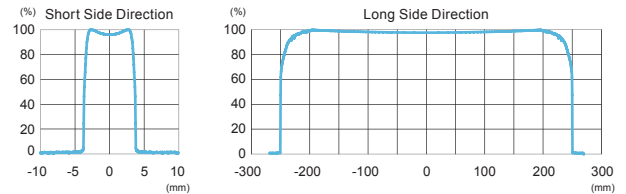
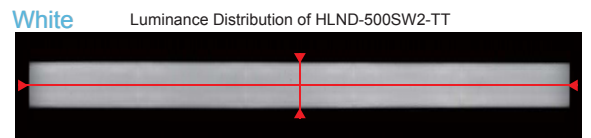


■ Measurement Setup

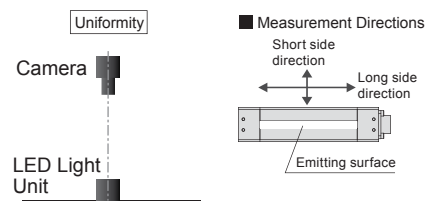


\* The values given here are for reference only. Results for individual Units may vary.

**Uniformity (Model for Transmitted Illumination)**



■ Measurement Setup



\* The values given here are for reference only. Results for individual Units may vary.

# Specifications \* The specifications are the same as those of the previous models.

Model	HLND-□□□SW2-TT	HLND-□□□SW2-RR	HLND-□□□RD-TT	HLND-□□□RD-RR
LED color	White (SW2)		Red (RD)	
Type	Transmitted illumination (TT)	Reflected illumination (RR)	Transmitted illumination (TT)	Reflected illumination (RR)
Correlated color temperature/ Peak wavelength	6,500 K (typ.)		624 nm (typ.)	
Case material	Aluminum alloy			
Connector	Metal Connector (SRCN2A16-7P)			
Polarity and signals	1, 2, and 3: +; 4, 5, and 6: -, 7: NC			
Operating environment	Temperature: 0 to 40°C, Humidity: 20% to 85% RH (with no condensation)			
Storage environment	Temperature: -20 to 60°C, Humidity: 20% to 85% RH (with no condensation)			
CE Marking	Conforms to safety standard EN 62471.			
Environmental regulations	RoHS compliant			
Cooling method	Natural air cooling			
Spectral distribution				
Applicable Control Unit	PSB3-30024			
Applicable Cable	FCB-n-1.25SQ-ME7 Series (n=2 m, 3 m, 5m, or 10 m), FCB-20-2.0SQ-ME7 Series (20 m)			

Model	Emitting surface length (□□□)	Power consumption (max.)		Weight (max.)
		White (SW2)	Red (RD)	
HLND-100	100 mm	10 W	4.8 W	520 g
HLND-300	300 mm	30 W	14 W	1,160 g
HLND-600	600 mm	60 W	29 W	2,120 g
HLND-900	900 mm	91 W	43 W	3,080 g
HLND-1200	1,200 mm	107 W	58 W	4,040 g
HLND-1500	1,500 mm	133 W	72 W	5,000 g
HLND-1800	1,800 mm	160 W	86 W	5,960 g
HLND-2100	2,100 mm	186 W	101 W	6,920 g
HLND-2400	2,400 mm	213 W	115 W	7,880 g
HLND-2700	2,700 mm	240 W	130 W	8,840 g

\* Emitting surface lengths are available in increments of 100 mm. Refer to information available on the Web or contact CCS for sizes not described in this document.

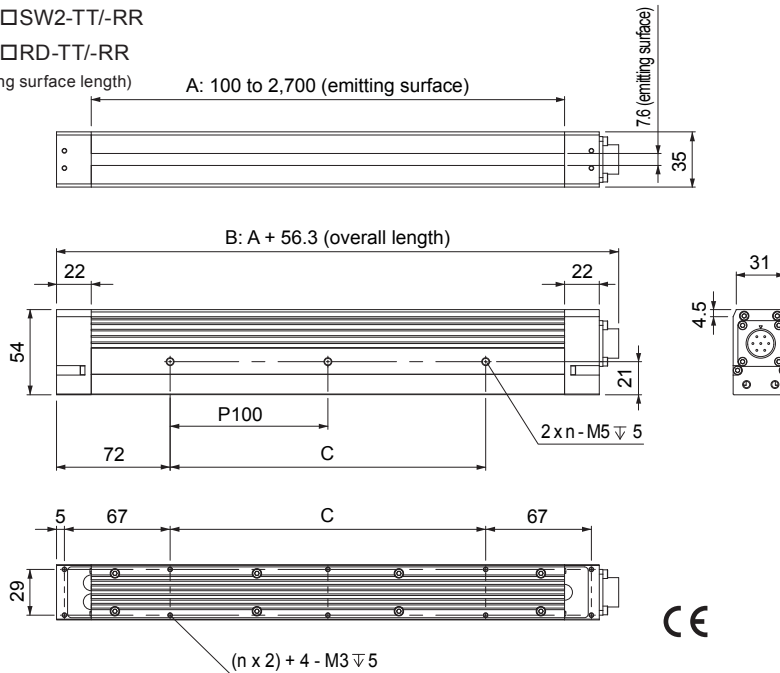
\* The values given here are for reference only. Results for individual Units may vary.  
 \* For details on the applicable Control Units and applicable Cables, refer to the general catalog or the CCS website.

# Dimensions (mm) \* The dimensions are the same as those of the previous models

HLND-□□□SW2-TT/-RR

HLND-□□□RD-TT/-RR

(□□□: Emitting surface length)



Model	A: Emitting surface	B: Overall length	C	n
HLND-100	100 mm	156.3 mm	-	1
HLND-300	300 mm	356.3 mm	200 mm	3
HLND-600	600 mm	656.3 mm	500 mm	6
HLND-900	900 mm	956.3 mm	800 mm	9
HLND-1200	1,200 mm	1,256.3 mm	1100 mm	12
HLND-1500	1,500 mm	1,556.3 mm	1400 mm	15
HLND-1800	1,800 mm	1,856.3 mm	1700 mm	18
HLND-2100	2,100 mm	2,156.3 mm	2000 mm	21
HLND-2400	2,400 mm	2,456.3 mm	2300 mm	24
HLND-2700	2,700 mm	2,756.3 mm	2600 mm	27

\* Emitting surface lengths are available in increments of 100 mm. Refer to information available on the Web or contact CCS for sizes not described in this document.

● CCS, LIGHTING SOLUTION, and HLND are registered trademarks or trademarks of CCS Inc.

## NOTICE

- Carefully read the product's *Instruction Guide* before use to ensure correct operation.
- For product improvement, specifications and designs are subject to change without notice.

