

# DATA SHEET



## S6LTC6003

Correctal® LTC150  
telecentric condenser  
with dimmable LED  
6500 K

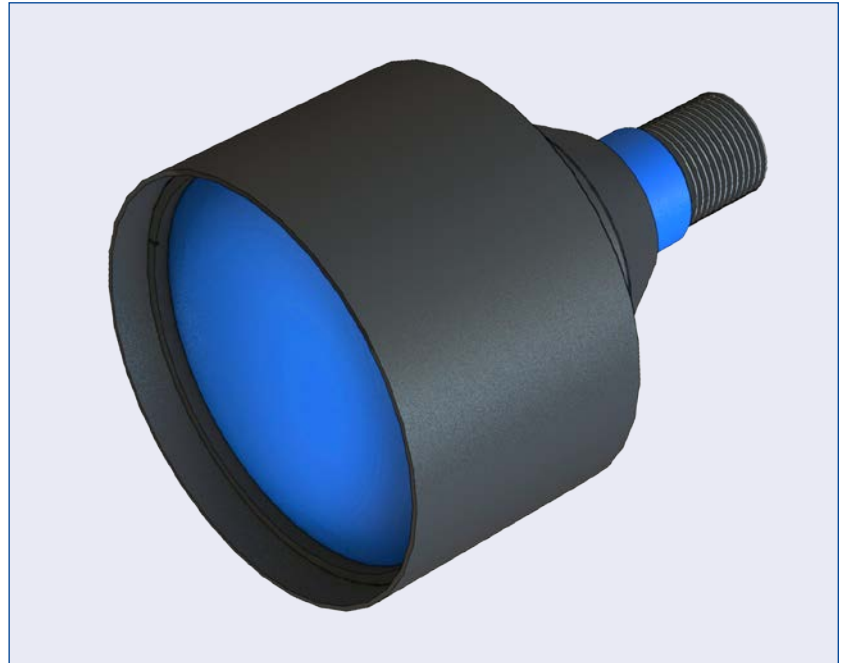
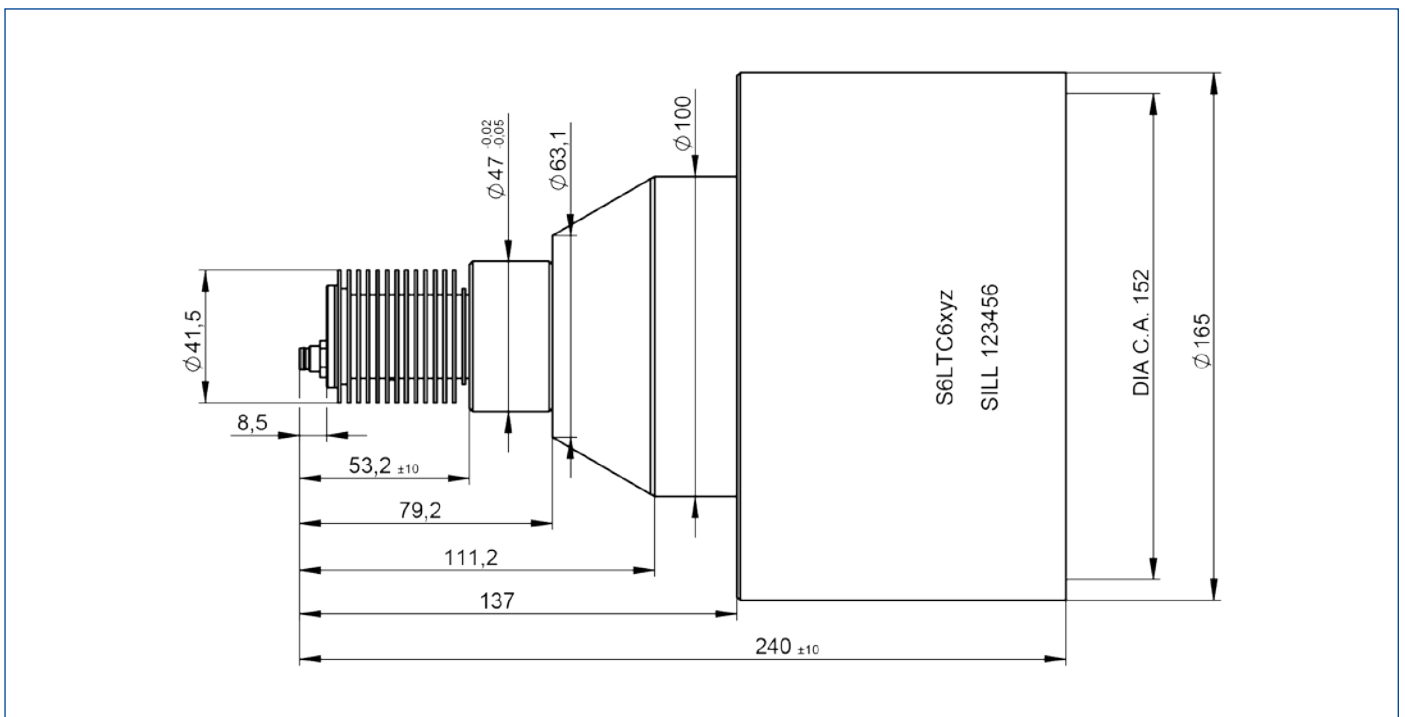


illustration only



outline drawing

# DATA SHEET



## specifications

article number	S6LTC6003
LED wavelength	6500 K
effective focal length [mm]	141.7
clear aperture [mm]	152
telecentric error [°]	1
length [mm]	236.8
recommended working distance [mm]	75.00 - 900.0
power supply DC [V]	12 - 24
max. power consumption [W]	4.4
dimmer [%]	10 - 100
connection	M8 / 4-pin male male
continuous illumination	pin 1 connect to pin 2: +24 V; pin 3+4: ground
flash illumination	pin 1: +24 V; pin 3: ground; pin 2+4: trigger
forward voltage [V] in flash mode	5 - 24
max. trigger frequency [kHz]	25
weight [kg]	6.80
accessory	S5ZUB0006 (connection cable)



## notes

- Safety:  
Attention!
- please avoid water and other liquids
  - mounting can get hot during use

**LED risk group 2 (DIN EN 62471:2009-03) at 500 mA - no special precautions necessary**

Warranty: Attention! Please do not open the condenser, due to warranty issues. Warranty will be expired, if seal is broken.

Data given by design.

Encoding for possible modifications S6LTCwxyz:  
w: clear aperture Ø  
x: 0 = standard; 1 = glued  
y: 0 = standard; 1 = with diffusor  
z: wavelength / color

**RoHS**  
compliant