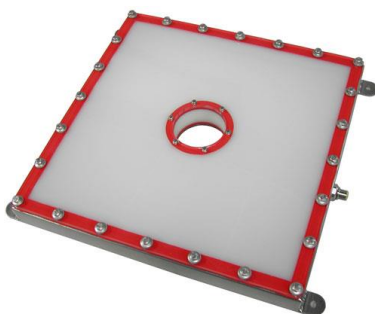



**product introduction**

The DLPW Front Light Washdown Series of lights are an innovative and highly versatile light with multiple custom sizes available. The DLPW Series of front lights offers backlit LED's for a more intense and highly diffuse lighting option. With its built in driver, no external wiring is needed and its narrow depth of just 30mm allows for mounting in tight locations. The DLPW Series of front lights offer a 65mm camera hole in the center for ease of viewing. Active area measurements include 190mm x 190mm, 300mm x 300mm, and 600mm x 600mm. Contact Smart Vision Lights for larger dimensions.


**product features**


- IP68 Standards
- Stainless Steel 316 Housing
- Meets FDA Compliancy
- Driver built in – No External wiring to a driver
- PNP and NPN Strobe input
- Continuous operation or Strobe mode
- Center camera hole
- Offered in White, Red, Green, Blue, IR


**product specifications**

|                         |  |
|-------------------------|--|
| <b>Electrical Input</b> | 24 VDC +/- 5%  |
| <b>Current</b>          | Based on size. Contact Smart Vision Lights                                 |
| <b>Wattage</b>          | Based on size. Contact Smart Vision Lights                                 |
| <b>Brightness</b>       | 30,000 lux - measured at surface of light                                  |
| <b>Strobe Input</b>     | PNP ► +3VDC or greater to activate.   NPN ► GND (<1VDC) to activate        |
| <b>PNP Line</b>         | 3.7mA @ 3VDC   6.2mA @ 5VDC   12.6mA @ 10VDC   30.4mA @ 24 VDC             |
| <b>NPN Line</b>         | 22mA @ Common (0VDC)   |
| <b>Continuous Mode</b>  | Light will be in continuous mode by leaving signal on strobe input active  |
| <b>Analog Intensity</b> | The output is adjustable from 10 -100% of brightness by a 0 -10 VDC signal |
| <b>Connection</b>       | 5 pin M12 connector  |
| <b>Lifespan</b>         | 100,000 hrs  |
| <b>Ambient Temp.</b>    | -20° - 50° C (-4° - 122° F)  |
| <b>IP Rating</b>        | IP68   |
| <b>Compliances</b>      | CE and RoHS  |
| <b>Weight</b>           | Based on size. Contact Smart Vision Lights                                 |
| <b>IEC 62471 Rating</b> | See page 3   |



## product number key

# DLPW - XXX x XXX - XXX —» Part Number Key

**Product Family:**  
Washdown  
Backlight  
DLPW

**Dimension:**  
Measured active area (mm)  
190x190, 300x300, 600x600

**Color:**  
470 – Blue  
530 – Green  
625 – Red  
850 - IR  
WHI - WHITE

CE and RoHS Compliant



## warnings



### Attention

Please note that the power requirements vary according to size. Contact Smart Vision Lights for more information regarding current and wattage ratings.



## wiring configuration

If Analog 0-10 VDC is not used to control light intensity;  
+VDC (24VDC) must be connected to Analog Input - Jumper pin 5 to pin 1

|  | Pin | Function          | Signal          | Wire Color |
|--|-----|-------------------|-----------------|------------|
|  | 1   | Power In          | +24VDC          | BROWN      |
|  | 2   | NPN               | Sinking Signal  | WHITE      |
|  | 3   | GND               | Ground          | BLUE       |
|  | 4   | PNP               | Sourcing Signal | BLACK      |
|  | 5   | Intensity Control | 0-10VDC         | GREY †     |

† Some cables use green with yellow stripe for 0-10V



## mounting & accessories

All mounting is provided by four  
5/16" hole welded tabs.

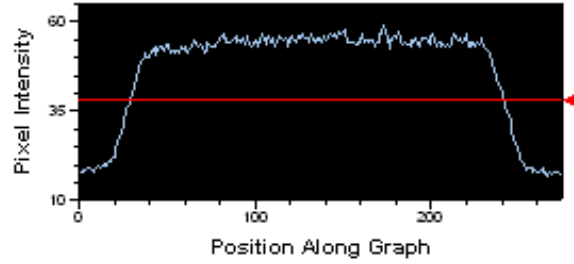
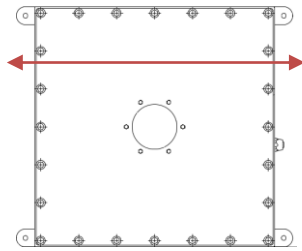
### Mounting

Polarizer options are available. Contact Smart  
Vision Lights for more information.

### Polarizer



## optical performance



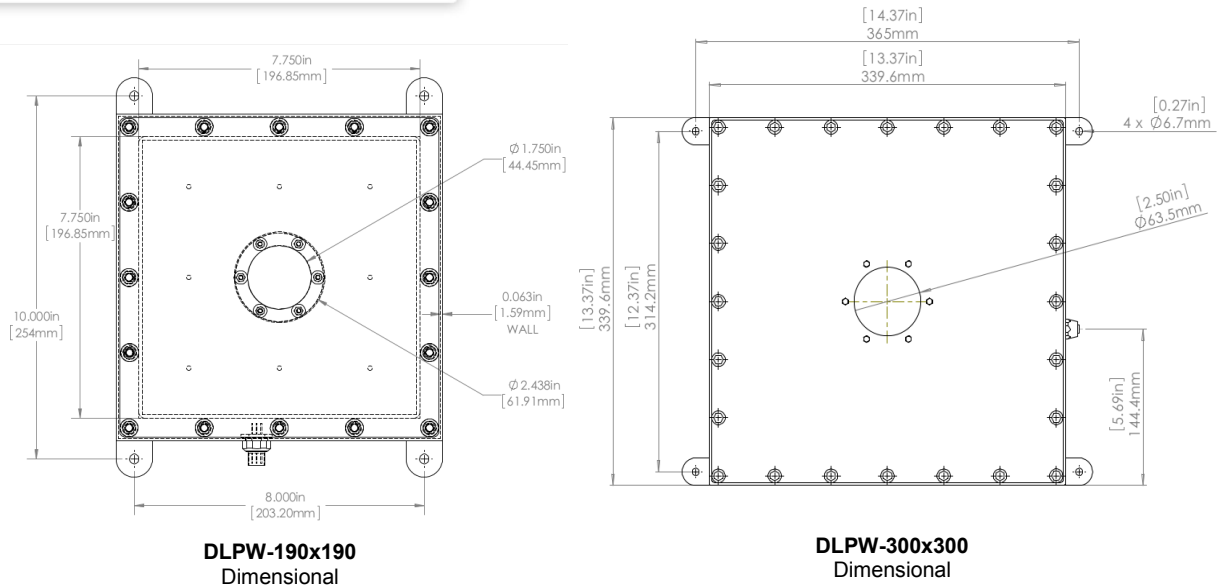
The DLPW Washdown offers a very diffuse light pattern at any defined working distance. The Pixel Graph representation shows a steep drop off in intensity outside of the active area with a very diffuse light pattern inside.

|                                 |                   |
|---------------------------------|-------------------|
| <b>Average Intensity Rating</b> | <b>30,000 lux</b> |
|---------------------------------|-------------------|

\*Lux measurement taken at surface of DLPW.



## CAD image



## risk group

### Notice

**Exempt Group:** No photo biological hazard to eyes or skin even for continuous, unrestricted use.  
Applicable for wavelengths: 625 and 850.

### Caution

**Risk Group 1:** Possibly hazardous optical radiation emitted from this product. Do not stare at operating lamp. May be harmful to eye. Safe for most applications except prolonged exposures.  
Applicable for wavelengths: 470, 530, and WHI.