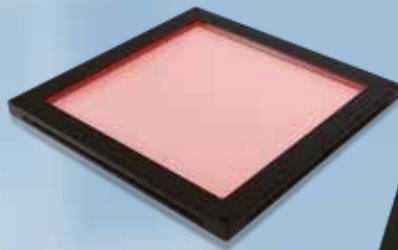


# LFX3 Series Line Pattern Lights

A cutting-edge method for inspecting bumps on a reflective surface

Workpiece: Mirrors, metal sheets, films, glass parts, liquid crystal parts, etc.



LFX3-100RD-PT-B



LFX3-200SW-PT-B

## Special Order Products

- **Line pitch**
  - 1 mm: The end of the model name is "A."
  - 2 mm: The end of the model name is "B."
- **Emitting surface size**
  - 50x50, 75x75, 100x100,
  - 150x150, 200x200 mm
- **LED color**
  - Red, white, blue, infrared

## Detect Gentle, Hard-to-find Bumps on Reflective Surfaces

Workpiece: Metal sheet

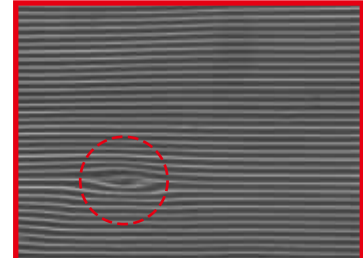


Coaxial Lights



Coaxial Lights illuminate the whole surface evenly, making it difficult to detect the bumps.

Line Pattern Lights



Line Pattern Lights highlight the bumps as curved lines.

## Two types of line patterns available to match your inspection conditions

Imaging examples

1 mm type

LFX3-PT-A Series

2 mm type

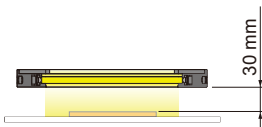
LFX3-PT-B Series



Narrow pitch

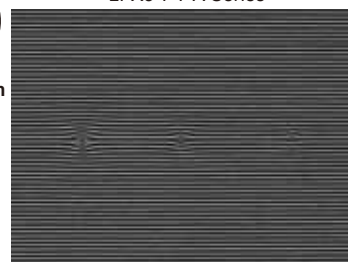


Wide pitch

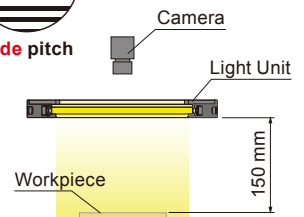
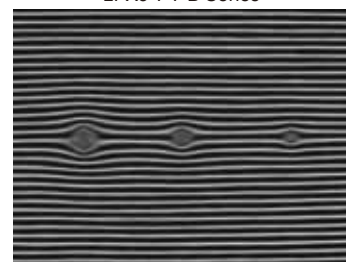


The distance from the Light Unit to the workpiece is **short**.

Distance: 30 mm



Distance: 150 mm



The distance from the Light Unit to the workpiece is **long**.

# Common Specifications

Series	LFX3-PT-A Series				LFX3-PT-B Series				Case material	Aluminum alloy, Resin (Light-guiding plate, protective plate)
Type	1 mm pitch				2 mm pitch				Cable length	300 mm
LED color	Red	White	Blue	Infrared	Red	White	Blue	Infrared	Operating env. (indoors only)	Temperature: 0 to 40°C, Humidity: 20 to 85%RH (with no condensation)
Correlated color temp. (typ.)	-	6,800 K	-	-	-	6,800 K	-	-	Storage environment	Temperature: -20 to 60°C, Humidity: 20 to 85%RH (with no condensation)
Peak wavelength (typ.)	632 nm	-	469 nm	857 nm	632 nm	-	469 nm	857 nm	Cooling method	Natural air-cooling
Input voltage (max.)	24 VDC								Light spectrum	
Connector	SM connector (SMR-03V-B)									
Polarity, signal	1:(+), 2: NC, 3: (-)									
CE marking	Safety standard: Conforms to EN62471									
Environmental regulations	RoHS compliant									

Note: The data included is for reference only. Results for individual products may vary.

## Product Lineup

Model name	LED color	Emitting surface size	Power consumption (max.)	Peak wavelength/ Correlated color temperature (typ.)	Weight (max.)
LFX3-50RD-PT-A/-B	Red	50 mm x 50 mm	13 W	632 nm	230 g
LFX3-50SW-PT-A/-B	White		12 W	6,800 K	
LFX3-50BL-PT-A/-B	Blue		6.1 W	469 nm	
LFX3-50IR860-PT-A/-B	Infrared		6.6 W	857 nm	
LFX3-75RD-PT-A/-B	Red	75 mm x 75 mm	13 W	632 nm	320 g
LFX3-75SW-PT-A/-B	White		18 W	6,800 K	
LFX3-75BL-PT-A/-B	Blue		9.1 W	469 nm	
LFX3-75IR860-PT-A/-B	Infrared		14 W	857 nm	
LFX3-100RD-PT-A/-B	Red	100 mm x 100 mm	19 W	632 nm	400 g
LFX3-100SW-PT-A/-B	White		23 W	6,800 K	
LFX3-100BL-PT-A/-B	Blue		13 W	469 nm	
LFX3-100IR860-PT-A/-B	Infrared		14 W	857 nm	
LFX3-150RD-PT-A/-B	Red	150 mm x 150 mm	25 W	632 nm	620 g
LFX3-150SW-PT-A/-B	White		35 W	6,800 K	
LFX3-150BL-PT-A/-B	Blue		19 W	469 nm	
LFX3-150IR860-PT-A/-B	Infrared		20 W	857 nm	
LFX3-200RD-PT-A/-B	Red	200 mm x 200 mm	37 W	632 nm	910 g
LFX3-200SW-PT-A/-B	White		46 W	6,800 K	
LFX3-200BL-PT-A/-B	Blue		25 W	469 nm	
LFX3-200IR860-PT-A/-B	Infrared		27 W	857 nm	

## Dimensions (mm)

**LFX3-PT-A/-B Series** (Common for all colors)

**Dimensions by size (mm)**

Emitting surface size	Dimensions				
	A	B	C	D	E
50x50	50	93	79	30	42.5
75x75	75	118	104	55	55
100x100	100	143	129	80	67.5
150x150	150	193	179	130	92.5
200x200	200	243	229	180	117.5

**Detail Diagram for the F-F Surface**

**Detail Diagram for the M3 Nut Slot**

- Dirt or dust on the surface of the emitting surface may affect the captured image. Handle the emitting surface with care. Make sure no dirt, dust, or fingerprints get on the Light Unit.
- Remove dirt and dust by blowing air rather than by hand.
  - Use a soft, finely woven cloth soaked with diluted neutral detergent to remove any heavy dirt.
  - Use a soft, finely woven cloth to wipe away any marks, such as fingerprints.

"CCS", "LIGHTING SOLUTION", and "LFX" are registered trademarks or trademarks of CCS Inc.

### CAUTION

- To ensure proper and safe use of the product, please read the Instruction Guide completely before using the product.
- The design and specifications of this product are subject to change without notification for product improvement.



**CCS Inc.**