

# DATA SHEET



## S6LTC9003

Correctal® LTC325  
telecentric condenser  
with dimmable LED  
6500 K

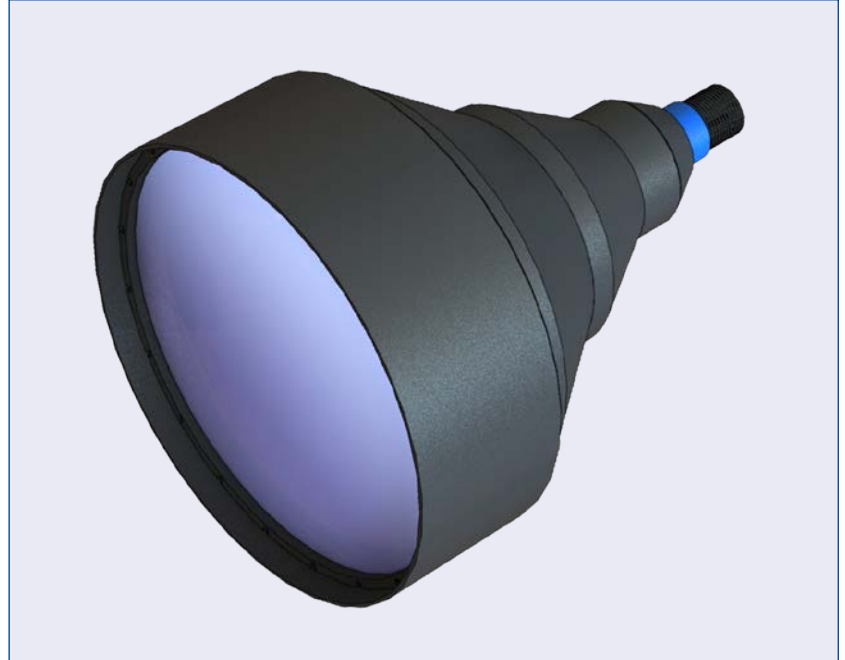
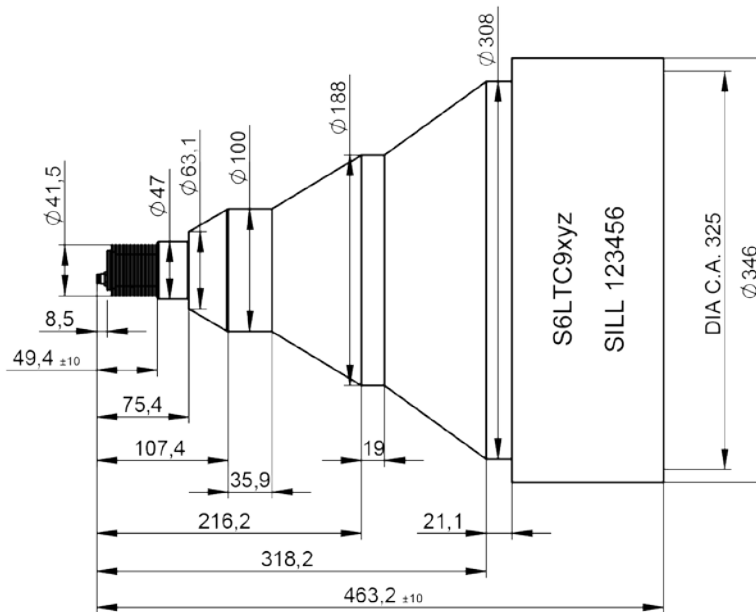


illustration only



outline drawing

# DATA SHEET



specifications	
article number	S6LTC9003
LED wavelength	6500 K
effective focal length [mm]	360.6
clear aperture [mm]	325
telecentric error [°]	1
length [mm]	461.6
recommended working distance [mm]	180.00 - 1000.0
power supply DC [V]	12 - 24
max. power consumption [W]	4.4
dimmer [%]	10 - 100
connection	M8 / 4-pin male male
continuous illumination	pin 1 connect to pin 2: +24 V; pin 3+4: ground
flash illumination	pin 1: +24 V; pin 3: ground; pin 2+4: trigger
forward voltage [V] in flash mode	5 - 24
max. trigger frequency [kHz]	25
weight [kg]	19.90
accessory	S5ZUB0006 (connection cable)



notes
Safety: Attention! • please avoid water and other liquids • mounting can get hot during use
<b>LED risk group 2 (DIN EN 62471:2009-03) at 500 mA - no special precautions necessary</b>
Warranty: Attention! Please do not open the condenser, due to warranty issues. Warranty will be expired, if seal is broken.
Data given by design.
Encoding for possible modifications S6LTCwxyz: w: clear aperture Ø x: 0 = standard; 1 = glued y: 0 = standard; 1 = with diffusor z: wavelength / color

RoHS  
compliant