

OPTICAL & MECHANICAL SPECIFICATIONS

1. Application	For 2/3" Format Day/Night Camera
2. Focal Length	35 mm
3. Maximum Relative Aperture	1 : 2.0
4. Iris Range	F2.0 - T360 (Equivalent to F360)
5. Image Size	φ11 mm (8.8 mm X 6.6 mm)
6. Back Focal Length	19.65 mm (in air)
7. Flange Focal Length	17.526 mm (in air)
8. Focus Range	∞ - 0.75 m (from Front of Lens)
9. Field Angle	a) Horizontal 14°20'
	b) Vertical 10°46'
	c) Diagonal 17°52'
10. Field of View at M.O.D	a) Horizontal 208 mm
	b) Vertical 117 mm
11. Clear Aperture	a) Front φ23.7 mm
	b) Rear φ16.2 mm
12. Exit Pupil Position	-74mm (from Image Plane)
13. Control	a) Iris See Electrical Spec.
	b) Focus Manual
14. Mount	C-Mount
15. Filter Screw Size	M40.5 X 0.5
16. Mass	Approx. 270 g

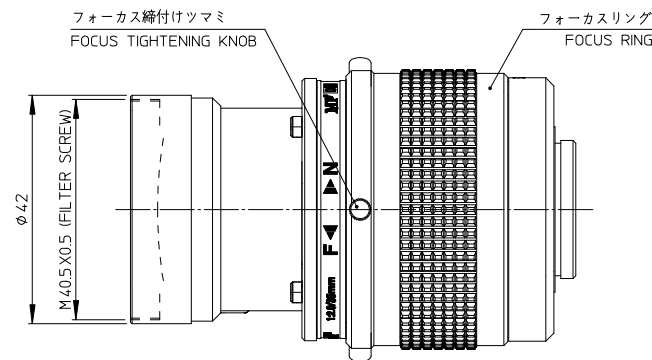
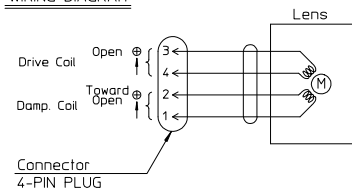
(*) Out of Focus occurs during Zoom operation due to the specification. Vari-focal length lens.

ELECTRICAL SPECIFICATIONS

Iris Characteristics	
a) Control	Auto (Not Incorporating Amplifier)
b) Coil Resistance	Drive Coil 190 Ω±10%
	Damping Coil 1150 Ω±10%
c) Operating Current	23 mA (Max.) at 4V DC

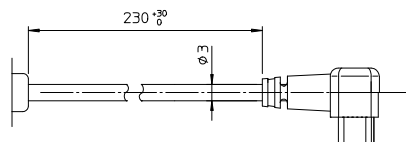
* When power is turned off, iris will automatically be closed.

WIRING DIAGRAM



ENVIRONMENTAL CONDITIONS

1. Temperature	a) Operating	-10°C to +50°C
	b) Storage	-20°C to +60°C
2. Relative Humidity		35% to 90%



アイリスコントロールケーブル
IRIS CONTROL CABLE
(CONNECTOR : 4-PIN PLUG)

