

# DATA SHEET



## S5LPJ7625 Correctal® T/1.28

- telecentric lens
- with c-mount / fixed iris
- with fixed iris

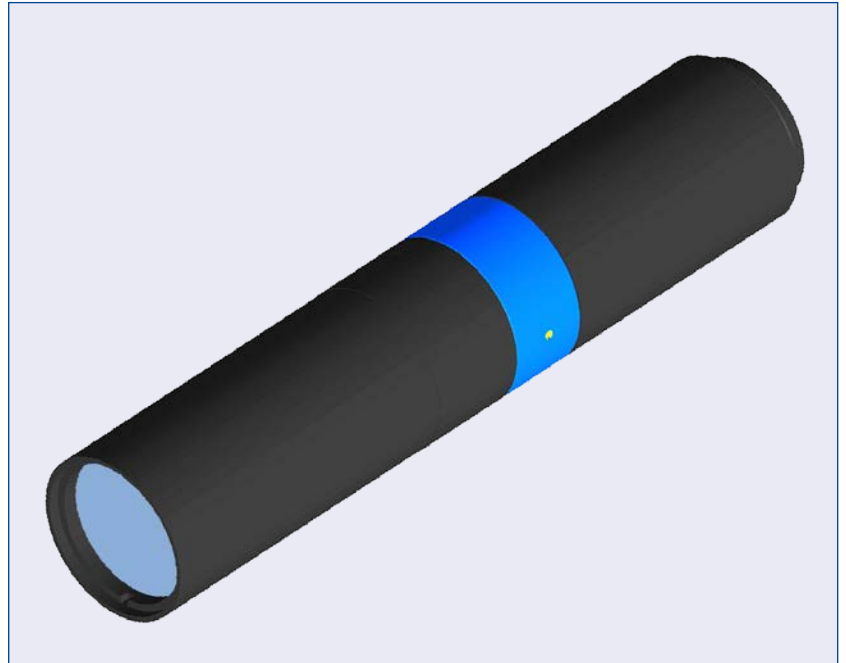
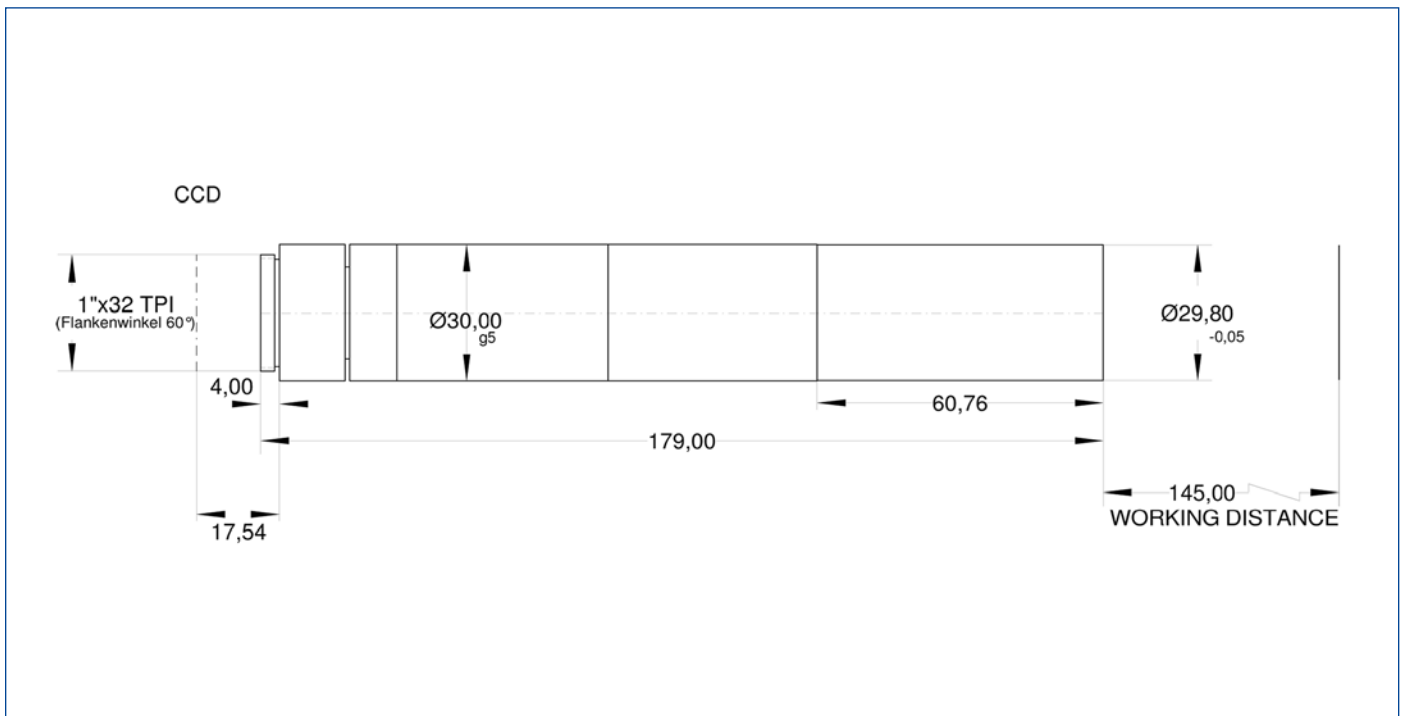


illustration only



outline drawing

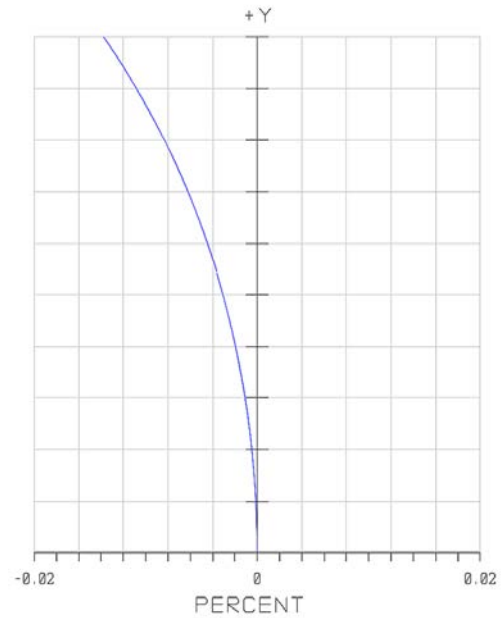
# DATA SHEET



## specifications

article number	S5LPJ7625
design wavelength [nm]	450-700
magnification (+/-5%)	1.331
working distance [mm] (+/-2%)	145.0
object size [mm]	3.6 x 2.7
at a chip size of [mm]	4.8 x 3.6 (1/3")
distortion [%]	<0.05
object size [mm]	4.8 x 3.6
at a chip size of [mm]	6.4 x 4.8 (1/2")
distortion [%]	<0.05
object size [mm]	6.6 x 4.9
at a chip size of [mm]	8.8 x 6.6 (2/3")
distortion [%]	<0.05
max. telecentricity error [°]	< 0.01
numerical aperture	0.03
weight [kg]	0.20
flange back distance [mm]	17.53
accessory	---

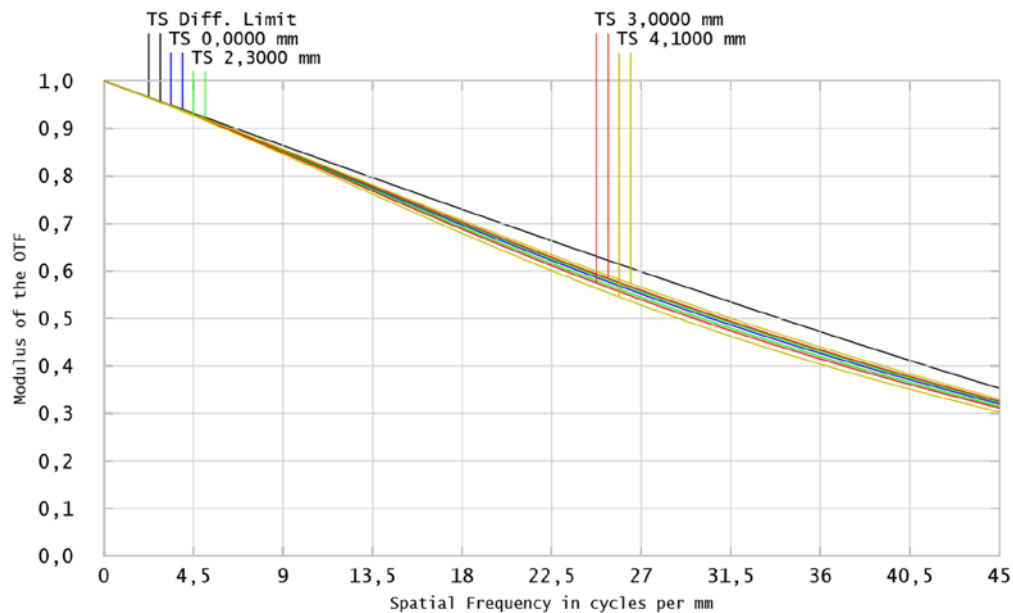
## Distortion for 586 nm



x = distortion

y = max. field

## MTF for various object heights at 586 nm



T. tangential

S. sagittal

graphs and data given by design.