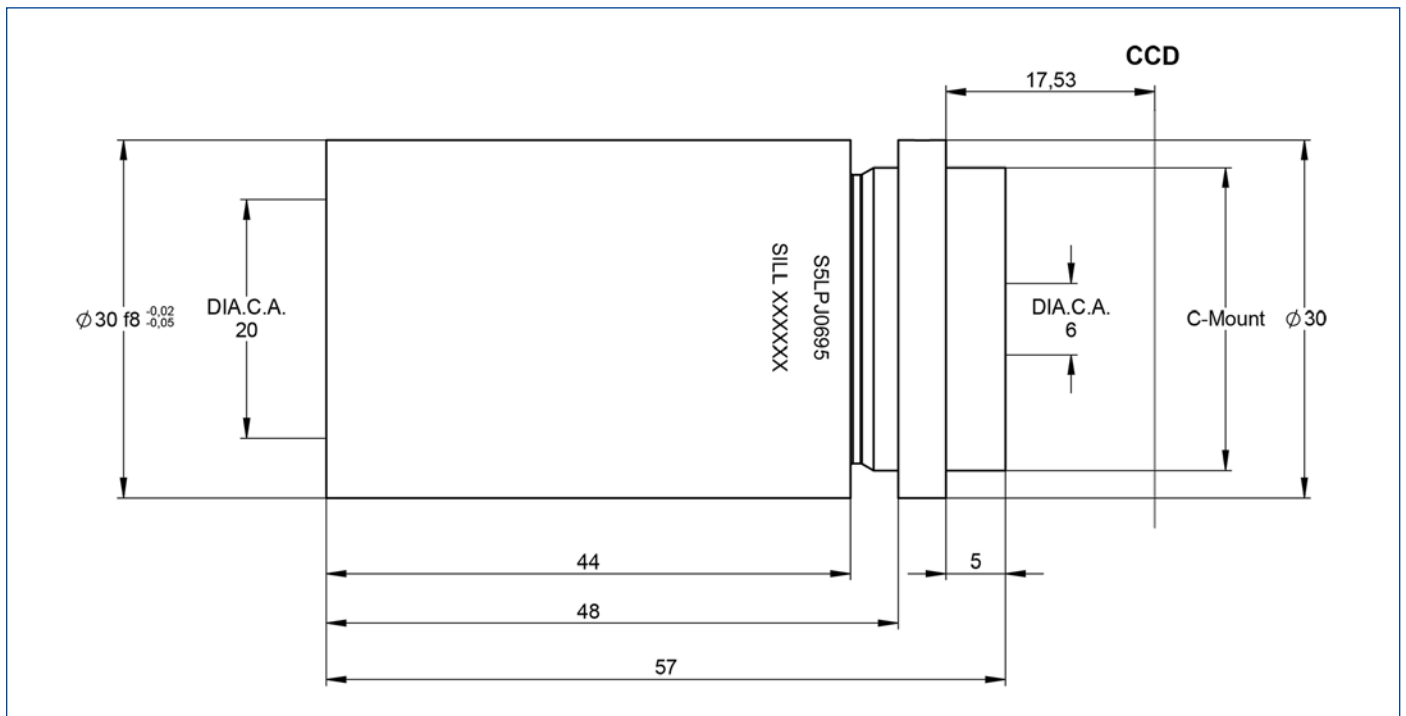


DATA SHEET



S5LPJ0695 Correctal® T/0.6

- telecentric lens
- with c-mount
- with fixed iris



outline drawing

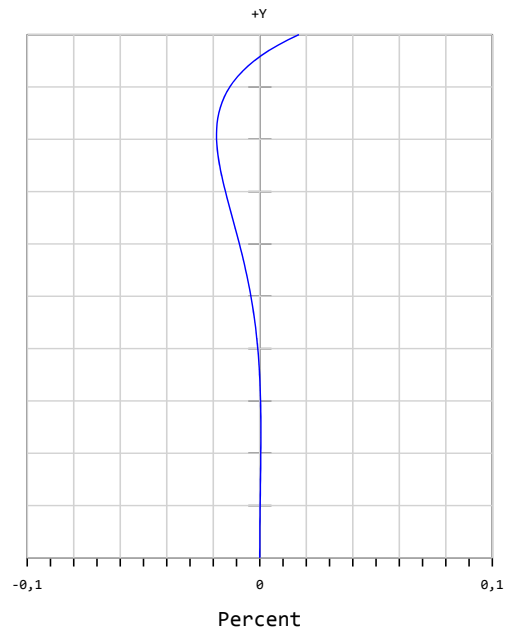
DATA SHEET



specifications

| | |
|-------------------------------|--------------------|
| article number | S5LPJ0695 |
| design wavelength [nm] | 450-700 |
| magnification (+/-5%) | 0.600 |
| working distance [mm] (+/-2%) | 95.0 |
| object size [mm] | 8 x 6 |
| at a chip size of [mm] | 4.8 x 3.6 (1/3") |
| distortion [%] | <0.05 |
| object size [mm] | 10.6 x 8 |
| at a chip size of [mm] | 6.4 x 4.8 (1/2") |
| distortion [%] | <0.05 |
| object size [mm] | 12 x 8.8 |
| at a chip size of [mm] | 7.2 x 5.3 (1/1.8") |
| distortion [%] | 0.06 |
| max. telecentricity error [°] | 0.04 |
| numerical aperture | 0.02 |
| weight [kg] | 0.30 |
| flange back distance [mm] | 17.53 |
| accessory | --- |

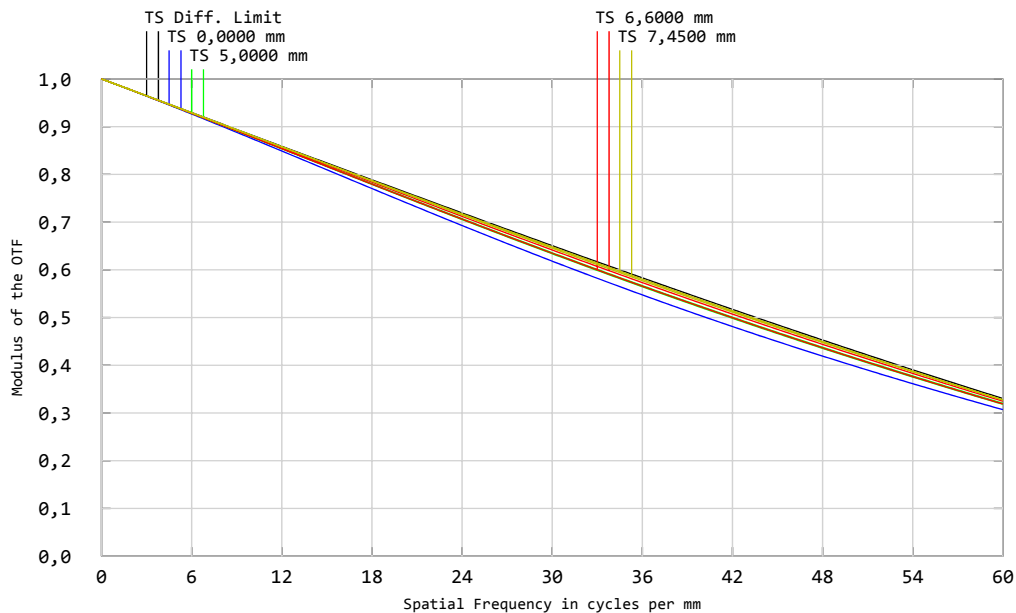
Distortion for 586 nm



x = distortion

y = max. field

MTF for various object heights at 586 nm



T. tangential

S. sagittal

graphs and data given by design.