

DATA SHEET



S5LPJ7315

SillVision XT300/0.07

- double-sided telecentric
- lens with c-mount
- with variable iris

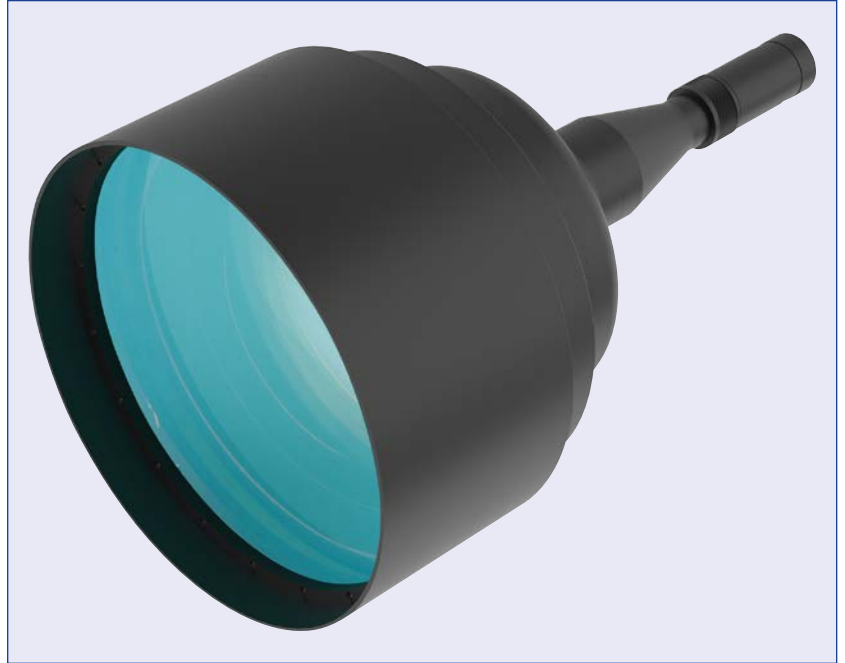
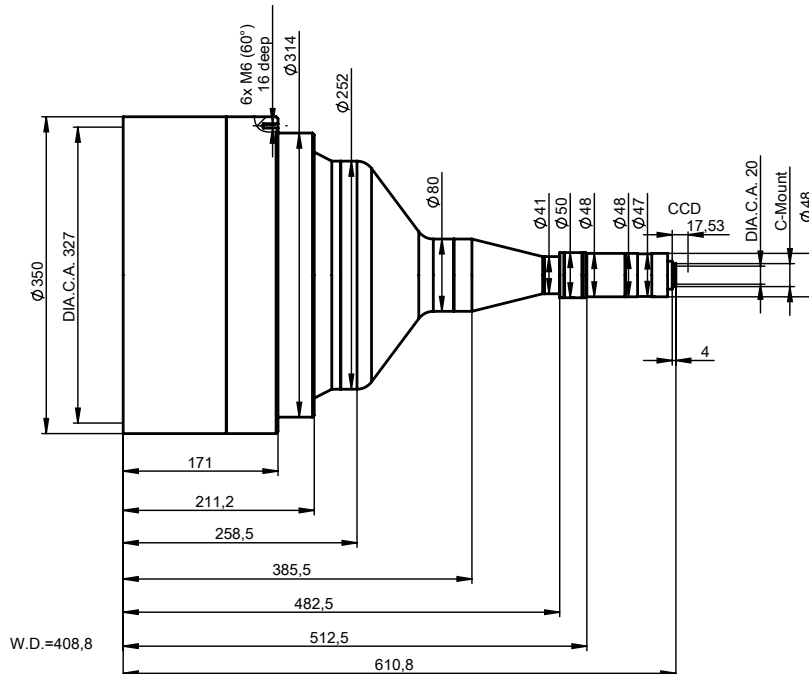


illustration only



outline drawing

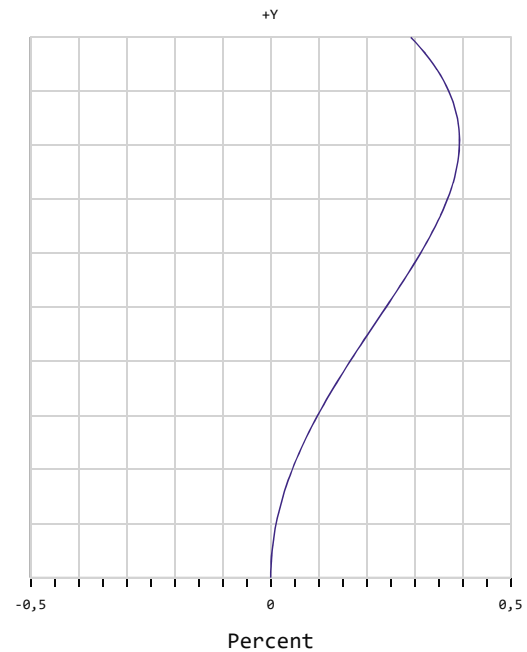
DATA SHEET



specifications

article number	S5LPJ7315
design wavelength [nm]	450-700
magnification (+/-5%)	0.067
working distance [mm] (+/-2%)	408.8
object size [mm]	131.3 x 98.5
at a chip size of [mm]	8.8 x 6.6 (2/3")
distortion [%]	0.33
object size [mm]	191 x 143.2
at a chip size of [mm]	12.8 x 9.6 (1")
distortion [%]	0.39
object size [mm]	210.4 x 158.2
at a chip size of [mm]	14.1 x 10.6 (1.1")
distortion [%]	0.4
max. telecentricity error [°]	0.21
numerical aperture	0.004
weight [kg]	26.50
flange back distance [mm]	17.53
accessory	---

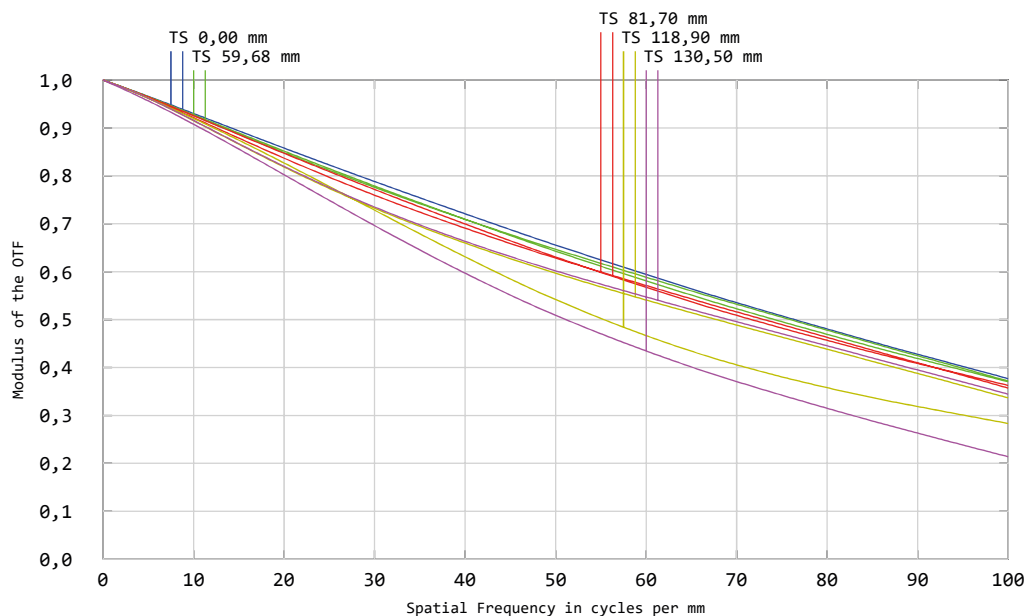
Distortion for 586 nm



x = distortion

y = max. field

MTF for various object heights at 586 nm



T. tangential

S. sagittal

graphs and data given by design.