

# DATA SHEET



## S5LPJ0451 Correctal® TL/10.0

- telecentric lens
- with M42-thread
- with variable iris

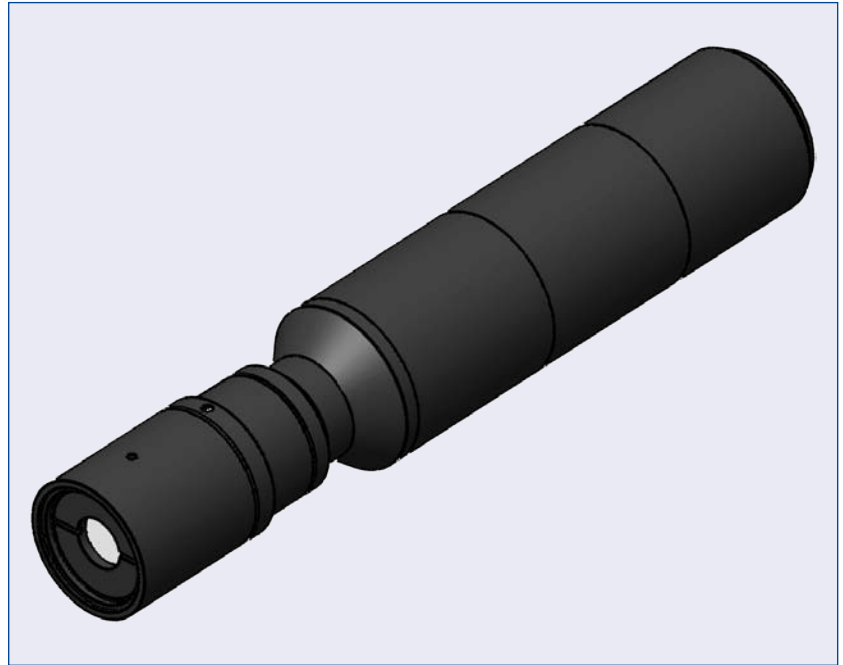
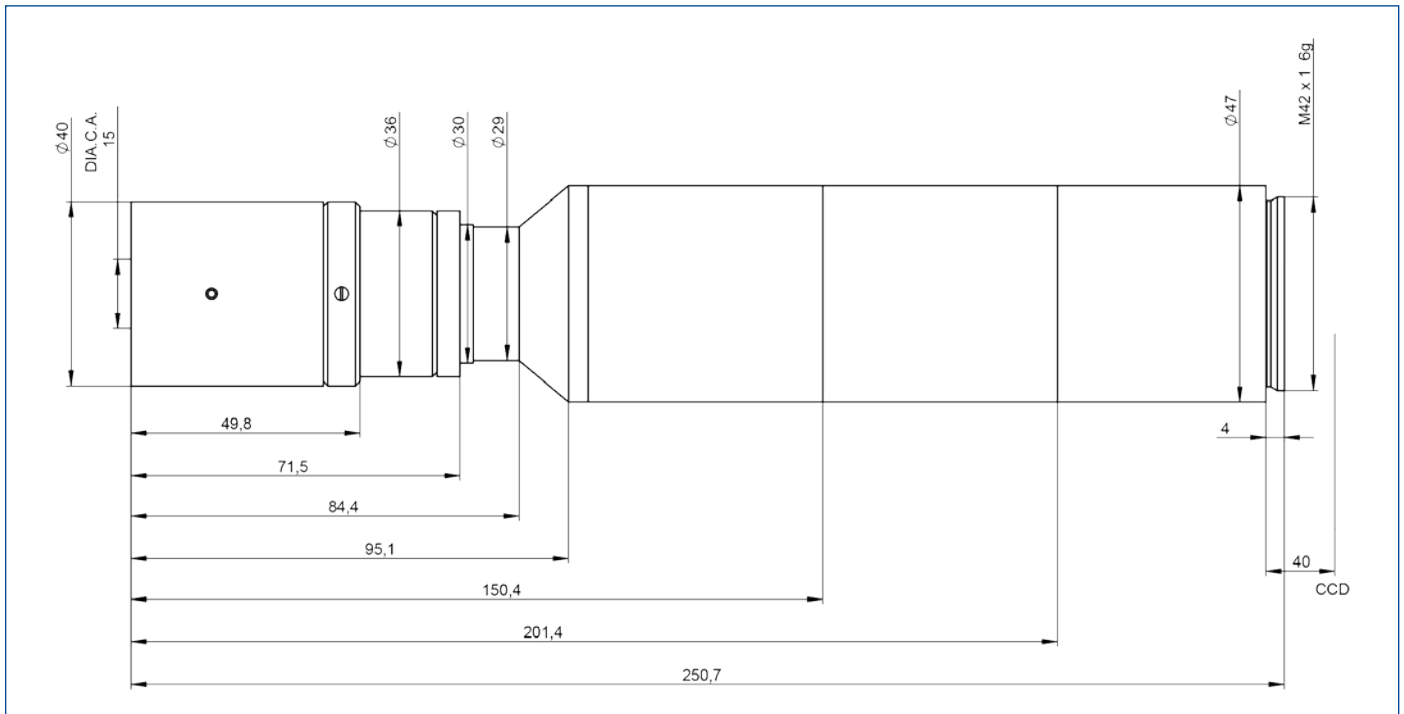


illustration only



outline drawing

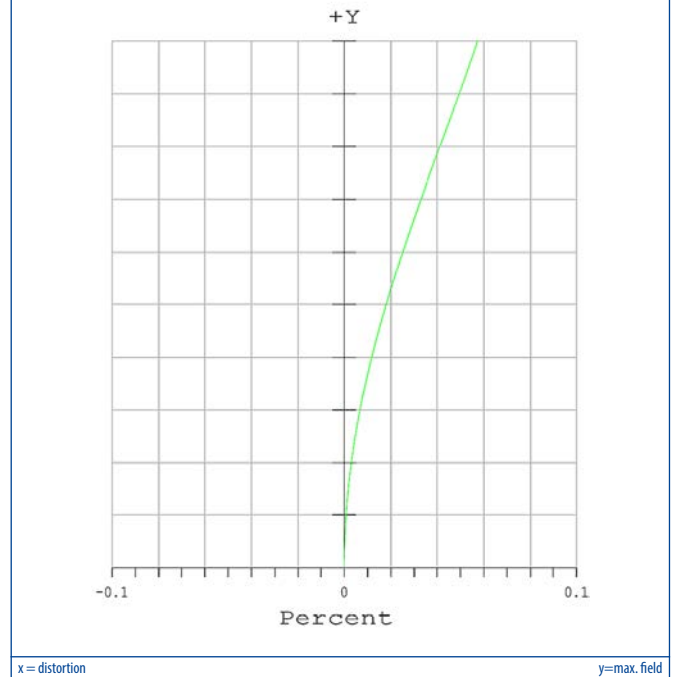
# DATA SHEET



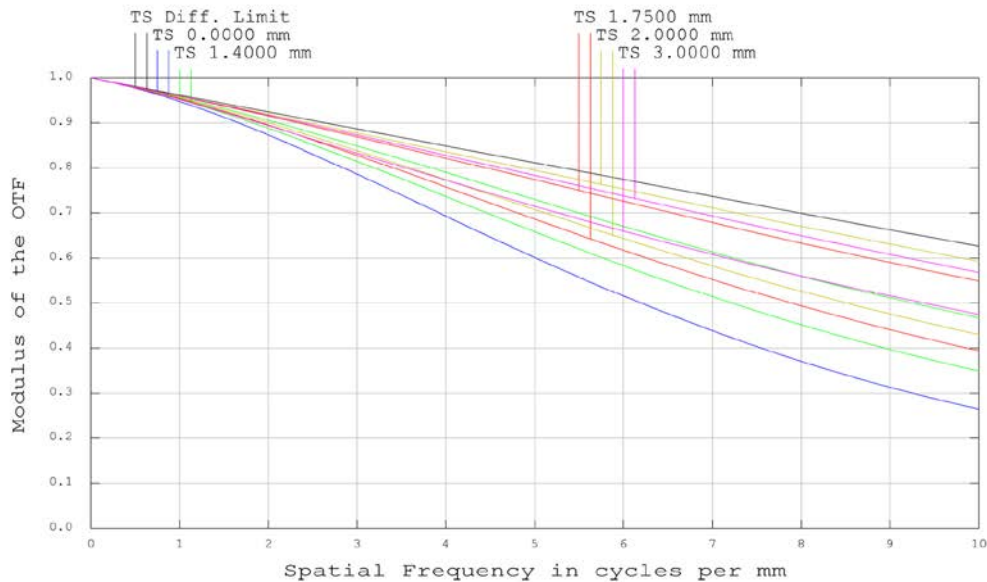
## specifications

article number	S5LPJ0451
design wavelength [nm]	450-700
magnification (+/-5%)	10.000
working distance [mm] (+/-2%)	49.7
object size [mm]	2.80
at a chip size of [mm]	28.6
distortion [%]	<0.05
object size [mm]	3.50
at a chip size of [mm]	35.0
distortion [%]	<0.05
object size [mm]	4,30
at a chip size of [mm]	43.3
distortion [%]	<0.05
max. telecentricity error [°]	< 0.01
numerical aperture	0.10
weight [kg]	0.50
flange back distance [mm]	40
accessory	S5SET0021

## Distortion for 586 nm



## MTF for various object heights at 586 nm



T. tangential

S. sagittal

graphs and data given by design.