

Application Note

Perception Park License Update

Version 1.0.0 from 23/07/2018

Author: Matthias Karl

How to move a Node Locked License to a USB Dongle

This application note describes how to move an existing Perception Park Node Locked License to a USB Dongle.

Copyright

Copyright © 2018 STEMMER IMAGING AG, Puchheim.

All rights reserved and subject to change.

STEMMER IMAGING, Common Vision Blox, Windows, Visual Basic, Visual C++, C++Builder, Visual Studio.net, Visual C#, Delphi are registered trademarks.

All rights to this manual are the property of STEMMER IMAGING AG, Puchheim/Germany. It may not be reproduced or copied in printed, electronic or photographic form or translated into another language, either in whole or in part, without the written agreement of STEMMER IMAGING AG.

Content

Content

1. Who and Why.....	4
2. Requirements.....	4
3. The Perception Park License Depot	4
Online License Activation.....	4
4. Transfer Of Licenses.....	7
5. Using an existing Common Vision Blox Dongle.....	10

1. Who and Why

This application note applies to every customer who wants to update Perception Core and Perception Studio to version 1.10 or newer.

Every existing STEMMER IMAGING customer who in the past bought a Perception Park Node Locked License will receive a new ticket from STEMMER IMAGING.

This ticket allows you to access the Online License Activation website from Perception Park. On this website it is possible to activate the new license and transfer them to one or separate dongles.

It is necessary to perform this license transfer because with version 1.10 the Node Locked License mechanism will not work anymore. Only the dongle based approach will be valid.

It is possible to store the Perception Core on a different dongle than Perception Studio in case the Core runs on a different PC as the Studio. In this case two dongles are needed.

2. Requirements

- Perception Software version 1.9 or higher.
- A ticket which refers to the licenses (web link)
- Internet access
- E.g. a dongle

3. The Perception Park License Depot

The Perception Park License Depot serves as access point for customers, to download additional licenses and to manage and maintain their owned Perception Park licenses.

The depot is accessible via this URL: <http://lc.codemeter.com/78511/depot/index.php>

For each order a Ticket number is generated, which is needed to access the specific licenses within the depot.

Online License Activation

Licenses can be activated online using the provided ticket number. It is necessary to open the aforementioned website and enter the ticket number:

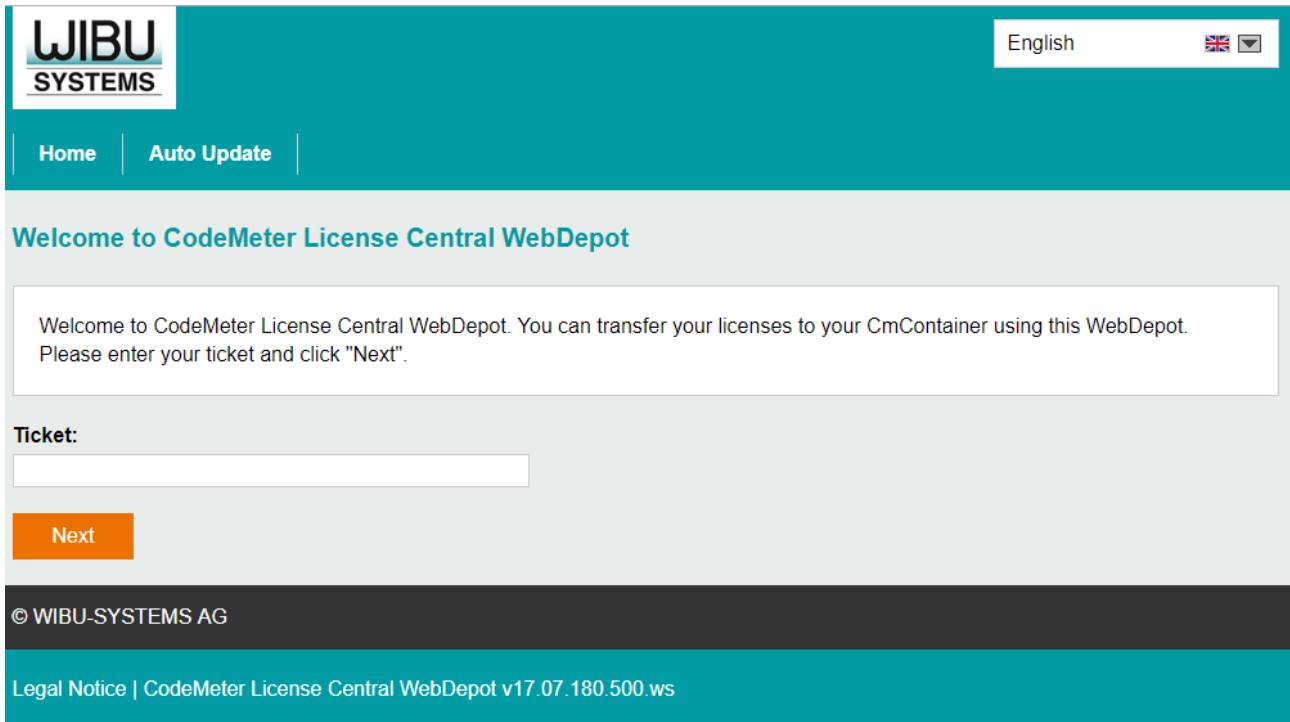


Figure 1

After a valid ticket number was entered, the depot will ask whether to bind the licenses on a dongle (CmDongle, left side) or to the local PC (CmActLicense, right side). Note that licenses, bound to a PC may not be moved afterwards and may be lost, if the PC breaks. Thus, dongles are the preferred method as they provide more flexibility.


WIBU SYSTEMS English

Home | My Licenses | Auto Update


Available Licenses - Select the binding for Your Licenses

You can bind your licenses either to a computer (**CmActLicense**) or to a dongle (**CmDongle**).

- When binding to a computer, the licenses are transferred to that machine. The licenses are associated with some properties of this computer.
- When binding to a CmDongle, the licenses are fully transferred into this dongle. This allows you to use these licenses on different computers.



I want my licenses in a dongle (**CmDongle**) to be able to use them on different computers.
Firm Code: 6000461



I want my licenses on one computer (**CmActLicense**).
Firm Code: 6000461 | CmContainer: Universal Firm Code
CmActLicense 6000461 (2000)

© WIBU-SYSTEMS AG

Legal Notice | CodeMeter License Central WebDepot v17.07.180.500.ws

Figure 2

Once the choice, where to store the license was made, it is possible to select the products to activate. If more than one dongle are connected to the PC, it is possible to choose which one to use as the target for the license transfer.

To activate the licenses, press the "Activate Selected Licenses Now". A window will popup, which shows the license transfer progress. **This window must not be closed or refreshed!**

Once the process has finished, your licenses are ready to use.

Available Licenses

To activate your licenses:

1. Select the licenses you want to activate.
2. Select the locally connected CmContainer to which you want to transfer the licenses.
3. Click "Activate Selected Licenses Now".

<input checked="" type="checkbox"/>	Name	Activated On	CmContainer	Status
<input checked="" type="checkbox"/>	Perception Core 1.8			Available
<input checked="" type="checkbox"/>	Perception Studio 1.8 Inline			Available
<input checked="" type="checkbox"/>	Perception Studio 1.8 Offline			Available
<input checked="" type="checkbox"/>	1.9 Compiler			Available
<input checked="" type="checkbox"/>	GenICam Support			Available
<input checked="" type="checkbox"/>	Perception Core			Available
<input checked="" type="checkbox"/>	Reserved			Available
<input checked="" type="checkbox"/>	Perception Studio <i>(License Quantity: 1)</i>			Available

Select CmContainer

3-4330380 (3125)

Offline license transfer

Figure 3

4. Transfer Of Licenses


Licenses can be transferred from one dongle to another by returning them to the depot and then activating them with another dongle. Therefore, connect the dongle, you want to remove the license(s) from, to your PC and go to the online license depot at <http://lc.codemeter.com/78511/depot/index.php>.

Now enter the ticket number for the license(s) you want to change and press "Next". If the dongle with those license(s) is not connected, the depot will show a warning, including the serial number of the correct dongle (found on the outside of the dongle hardware)

The screenshot shows the CodeMeter License Central WebDepot interface. At the top left is the WIBU SYSTEMS logo. At the top right, there is a language selection dropdown set to "English" with a UK flag icon. Below the logo, there are navigation links for "Home" and "Auto Update". The main heading reads "Welcome to CodeMeter License Central WebDepot". A white text box contains the message: "Welcome to CodeMeter License Central WebDepot. You can transfer your licenses to your CmContainer using this WebDepot. Please enter your ticket and click 'Next'." Below this is a "Ticket:" label followed by an empty text input field. An orange "Next" button is positioned below the input field. The footer area is dark grey and contains the text "© WIBU-SYSTEMS AG". The bottom-most teal bar contains the text "Legal Notice | CodeMeter License Central WebDepot v17.07.180.500.ws".

Figure 4

Once the correct dongle is connected, the licenses can be returned to the depot by pressing "Re-Host Licenses". After this step, it is possible to download the license(s) to another dongle or PC.



English

Home
My Licenses
Auto Update

My Licenses

Name	Activated On	CmContainer	Status
Perception Core 1.8	2018-04-10 18:00:13	3-4330393	Available: 0 (1)
Perception Studio 1.8 Inline	2018-04-10 18:00:13	3-4330393	Available: 0 (1)
Perception Studio 1.8 Offline	2018-04-10 18:00:13	3-4330393	Available: 0 (1)
1.9 Compiler	2018-04-10 18:00:13	3-4330393	Available: 0 (1)
GenICam Support	2018-04-10 18:00:13	3-4330393	Available: 0 (1)
Perception Core	2018-04-10 18:00:13	3-4330393	Available: 0 (1)
Reserved	2018-04-10 18:00:13	3-4330393	Available: 0 (1)
Perception Studio	2018-04-10 18:00:13	3-4330393	Available: 0 (1)

Re-Host Licenses

© WIBU-SYSTEMS AG

Legal Notice | CodeMeter License Central WebDepot v17.07.180.500.ws

Figure 5

5. Using an existing Common Vision Blox Dongle

In addition to using a new, empty, Wibu Codemeter dongle, it is also possible to use an already existing CVB dongle and add the Perception Park license to it.

The CVB license on that dongle will not be lost.

It might be that the firmware version of the dongle is too old in order to work with Perception Parks way of storing the licenses. In that case it is possible to update the firmware. Open the "CodeMeter Control Center", choose the dongle which you want to update and press the update button.

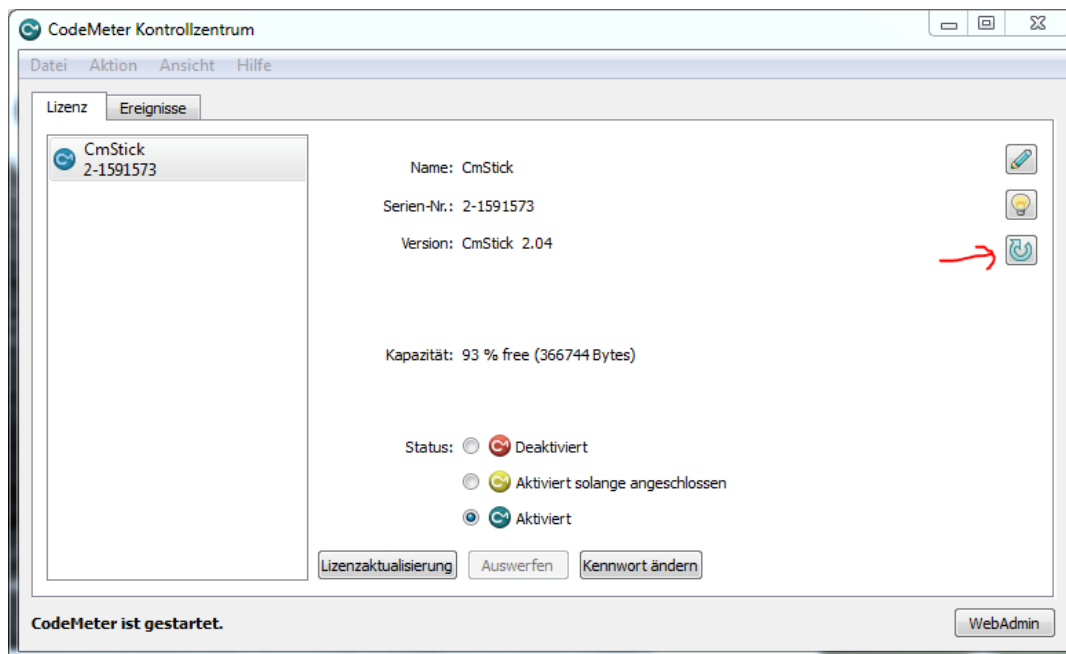


Figure 6- Update Dongle