

BOA™ Spot Vision Sensors



Features and Benefits

- Integrated light, lens and processing
- Standard and high resolution sensor options
- M12 (standard) or C-mount lens options
- Easy-to-use GUI
- Embedded vision tools for matching, counting, feature finding and measuring applications
- Built-in factory communication protocols
- FTP image transfers
- Hardware relearn and job switching
- Remote monitoring
- Compact industrial enclosure
- Low overall cost of ownership

Overview

BOA Spot vision sensors offer simplicity, affordability and reliable inspection performance for error-proofing applications.

The BOA Spot vision sensor combines the power and flexibility of a BOA vision system with integrated optics, light and easy-to-use setup software to deliver high value capabilities at a low cost of ownership.

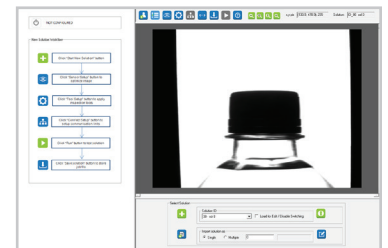
Included within the BOA Spot vision sensor is a set of robust vision tools for part locating, counting, measuring and feature or defect detecting applications. These tools can be combined and used multiple times to solve simple or complex inspection tasks that are beyond the capabilities of traditional sensors.

Inspections using BOA Spot vision sensors can be triggered by parts in motion or from a PLC after being moved into position. Standard factory protocols, such as Ethernet/IP and PROFINET, are directly supported for communicating with 3rd party equipment or the factory enterprise. Furthermore, inspected images can be transferred to a networked drive using the FTP protocol.

The BOA Spot enclosure is compact and easy to integrate mechanically. M12 connectors are accessible on the back of the unit for Ethernet and I/O interfacing. Standard M12 cabling is supported to further reduce integration cost.

GUI

The software user interface is quick to learn and applicable for both novice and expert users alike. Guided setup is supported on the top navigation bar, while the left and bottom panels are used for function-specific setup, advanced control and status reporting. The interface offers a full complement of features for both setup and runtime operation.



MODELS

BOA Spot is being initially offered in 4 models, differentiated by sensor resolution and software capabilities. The “Standard Level” models offers a basic set of inspection tools for presence/absence and measurement applications. The “Expanded Level” models offer additional tools and advanced capabilities for more complex tasks.

BOA™ Spot Vision Sensors

		BOA Spot MODELS			
		0640M-SL	1280M-SL	0640M-EL	1280M-EL
Setup Interface		Inspect Express			
Job Storage		32			
Sensor	Type	1/3" Mono Global Shutter			
	Format	640x480	1280x960	640x480	1280x960
	Rate	45 fps	30 fps	45 fps	30 fps
Lens	M12 Standard	8mm			
	M12 Option	6, 12, 16mm			
	C-Mount Option	6mm - 50mm			
Light	Standard	6 LED White Ring Light			
	Options	6-LED Ring Light (Red or Blue)			
		External light with strobe control			
Communications	Connections	M12 Ethernet			
		M12 Power, I/O, RS-232			
	Inputs	3 (1 Trigger, 2 general purpose/job select)			
		ON > 10VDC (xmA); OFF < 2VDC (xmA)			
	Outputs	3 (general purpose)			
		100 mA max load at 24V			
Protocols	Ethernet, Ethernet/IP, PROFINET				
		FTP, RS-232			
Vision	Location	Pattern Edge		Pattern Edge Circle	
	Inspection	Pattern Edge Brightness Area		Pattern Edge Brightness Area Contour	
	Counting	Edge		Edge Pattern	
	Measuring	Distance		Distance Angle Arc, Circle	
Enclosure	Material	6061 Aluminum			
	Dimensions	61mm x 58mm x 57mm			
	Mounting	8 x M4			
	Weight	0.2kg			
	Protection	IP67			
	Certification	CE, RoHS			
Operating	Power	12-30 VDC			
		250 mA maximum @ 24V; 300mA @ 24V including light			
	Temperature	0-50°C Operating			

www.teledynedalsa.com

Americas

Boston, USA
+1 978-670-2002
sales.americas@teledynedalsa.com

Europe

Krailling, Germany
+49 8989 5457 380
sales.europe@teledynedalsa.com

Asia Pacific

Tokyo, Japan
+81 3-5960-6353
sales.asia@teledynedalsa.com

Shanghai, China
+86 21-3368-0027
sales.asia@teledynedalsa.com

Teledyne DALSA has its corporate offices in Waterloo, Canada
Teledyne DALSA reserves the right to make changes at any time without notice. Teledyne DALSA © 2016.

