



BOA2: More Pixels. More Power.

Built for Industry. Made for End Users.



That's one SMART Camera

INTRODUCING BOA2: A complete vision system in a smart camera format. Featuring our highest smart camera resolution yet, BOA2 systems are well suited for precision measuring applications and can image and inspect large parts or large surface areas, thus reducing the number of sensors and overall cost of deployment.

More PIXELS

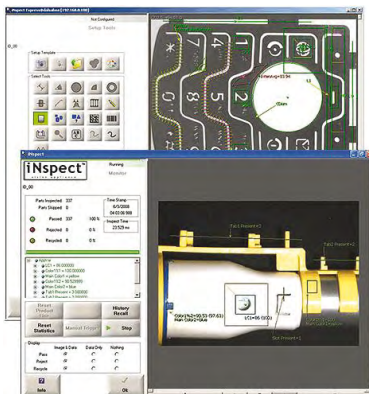
BOA2 uses advanced CMOS global shutter sensors with resolutions up to 5 megapixels to capture more detail in a larger inspection area. Superior image resolution allows BOA2 to capture the smallest defects that lower resolution sensors miss.



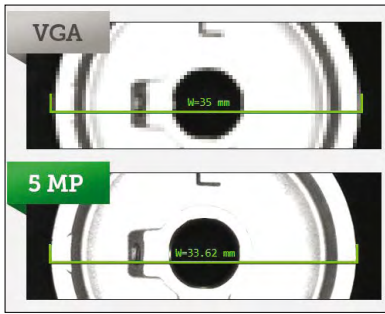
More POWER

Each BOA2 smart camera is powered by a dual-core 1.5 GHz processor that drives the embedded iInspect Express vision software. This easy-to-use software features a suite of field proven inspection tools for tasks such as:

- » Pattern Matching
- » Precision Measurements
- » Flaw Detection
- » ID and Verification
- » Presence/Absence of features
- » Robot Guidance
- » Part Identification
- » 2D matrix Reading
- » Barcode Reading
- » Optical Character Recognition

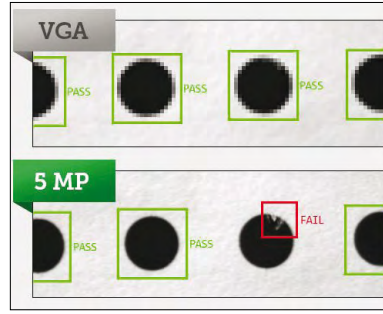


Features



Precision Measurement

With the superior resolution of the BOA2, more pixels means higher measurement accuracy.



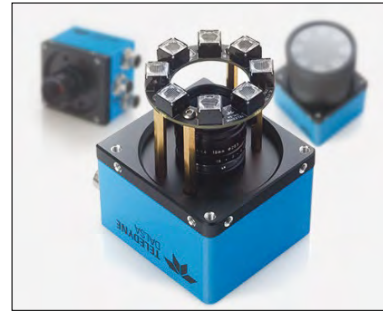
Defect Detection

BOA2's high resolution sensor enables detection of smaller defects that could be missed by low resolution cameras.



Verification

Available resolutions up to 5 megapixels allow for a larger area to be inspected at once.



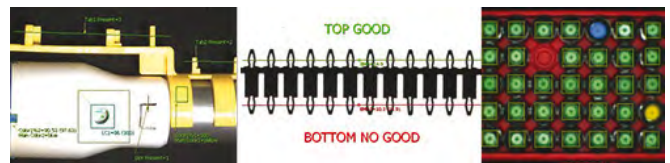
Integrated Lighting

BOA2 (XA2 model only) offers an optional integrated high-intensity ring light for compact, uniform target illumination.

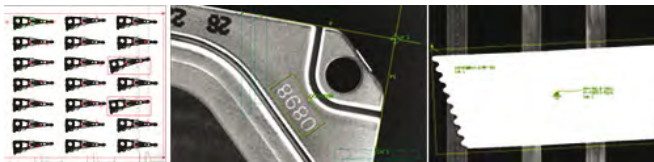
Applications



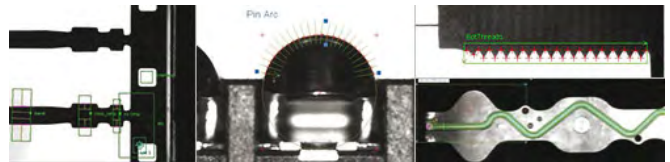
IDENTIFYING



MEASURING



GUIDING



VERIFYING

Camera Models

MODEL	RESOLUTION	SPECTRUM	INTERFACE	PIXEL SIZE	STANDARD
BOA2 XA2 Part Number: BOA2XA2	1664 x 1216	Mono	RS232, Gigabit Ethernet	5 µm	80 fps
BOA2 XA3 Part Number: BOA2XA3	1920 x 1440	Mono	RS232, Gigabit Ethernet	5 µm	60 fps
BOA2 XA5 Part Number: BOA2XA5	2560 x 2048	Mono	RS232, Gigabit Ethernet	5 µm	40 fps

