



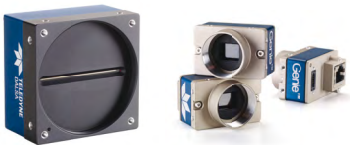
GEVA: Vision Systems for the Factory Floor

High Performance, Great Power, Great Price



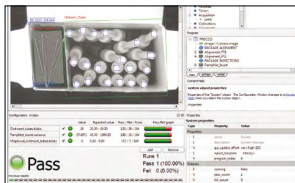
Multi-Camera Inspection

Our GEVA vision systems offer the performance and flexibility to inspect multiple parts, assemblies or surfaces at the same time. These systems are equipped with multi-core processors, high-speed camera ports and versatile I/O options to match your application and factory integration requirements.



Camera Flexibility

GEVA vision systems are compatible with a wide range of cameras for both area and line based imaging. These include our full complement of Gigabit Ethernet and Camera Link cameras with mono or color sensors, as well as 3rd party alternatives. Expanding or modifying your camera configuration is both easy and cost effective with GEVA.



Embedded Application Software

All of our vision systems come with application software embedded. Simply connect the system components, apply power and start building your solution. Select from the ease-of-use of iInspect Express or the flexibility of Sherlock – the choice is yours!



I/O Solutions

We offer standard I/O solutions for all of our systems. These breakout modules provide isolation for cameras and simplify integration within the control environment. In addition, some of our systems have I/O capabilities built in. Our embedded software applications support standard factory protocols for communicating with complementary equipment.

Flexible Power, Easy to Use — GEVA Family



GEVA 1000

High Performance at a Great Cost

GEVA 100 is a high-performance industrial controller that offers excellent cost savings for multi-camera vision applications, such as final inspection of large assemblies. At the heart of GEVA is a powerful dual core processor, equipped with high-speed memory resources to tackle the most demanding applications.



GEVA 300

Great Power at a Great Price

The GEVA 300 is a fanless, compact vision system for multi-camera applications. Based on the Intel® dual-core ATOM™ architecture, with 6 dedicated GigE ports and 2GB of high-speed DDR2 memory, the GEVA-300 offers robust performance for a wide range of machine vision applications at low power consumption levels.



GEVA 3000

High Performance Offering Excellent Cost Savings

With over six times the processing performance of the entry level GEVA 300 and up to three times the performance of the GEVA 1000. The ruggedized GEVA 3000 is equipped with a low power, Gen3 Core i7 processor and high-speed system resources to effectively manage multi-camera applications.



GEVA 4000

High Performance Offering Excellent Cost Savings

GEVA 4000 is Teledyne DALSA's highest-performance industrial controller, offering excellent cost savings for multi-camera vision applications such as final inspection of large assemblies. With over eight times the processing performance of the entry level GEVA 300 and up to four times the performance of the GEVA 1000 the ruggedized GEVA 4000 is equipped with a low power, Gen3 Core i7 processor, 16 GB of RAM and high-speed system resources to effectively manage multi-camera applications.



GEVA 312T

Your Complete System, at a Low Cost

The GEVA 312T is an integrated vision system complete with a 12" touch screen display, 1.6GHz dual core processor and two Gigabit Ethernet camera ports. The slim-line form factor maximizes control panel real estate for PLCs, motions controllers and non-vision related components.



iNspecT EXPRESS

iNspecT Express and Sherlock Software

Each GEVA-System supports a wide variety of GigE area and line scan cameras, including Teledyne DALSA's own Genie cameras, and is offered with either iNspecT Express or Sherlock software running on the Microsoft® Windows® 7 Embedded Operating System.



SHERLOCK

	GV 300	GV 312T	GV 1000	GV 3000	GV 3000CL	GV 4000
Space Saving	✓					✓
Cost	\$	\$	\$\$	\$\$	\$\$	\$\$
Integrated Display		✓				
1 or 2 Cameras	✓	✓	✓	✓	✓	✓
3 or More Cameras	✓	via Switch	via Switch	✓	✓	✓
No Moving Parts	✓	✓		✓	✓	✓
Performance	Good	Good	Very Good	Excellent	Excellent	Superior
I/O	PL-USB	PL-USB	✓	PL-USB	✓	PL-USB
Line Scan			✓	✓	✓	✓

