

iNspec Vision Application Software

Intuitive Interface, Uncompromising Functionality



Machine Vision Made Simple

iNspec™ is a vision application software specifically designed to simplify the design and deployment of automated inspection on the factory floor. iNspec offers new and experienced users alike a practical tool delivering uncompromising functionality that can be readily applied to a wide range of manufacturing tasks.

iNspec's simple, straightforward setup allows users to quickly configure and deploy an application. Each of the inspection tools have been carefully designed to extract the relevant information from the object image. No programming or extensive training is required!



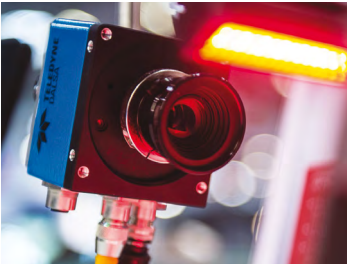
Intuitive User Interface

- » Graphical point and click interface accessed via web browser or local keyboard and mouse
- » Localized with different languages
- » Easy camera, trigger and lighting setup via slider controls
- » Versatile icon driven tool palette
- » Flexible communication options
- » Administration control and data logging
- » Emulator for offline application development



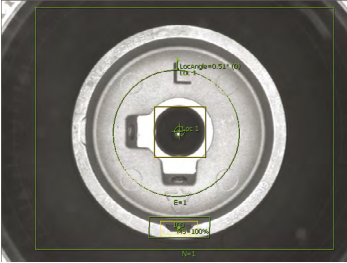
Flexible Camera Solutions

- » Multi camera compatibility offers low-cost per camera solutions. Each license can support up to 8 cameras.
- » Supported by analog (via Vision Appliance), Firewire or GigE camera
- » Flexible range of image resolution 640x480 to 1600x1200
- » Mono or color imagers
- » Synchronous and asynchronous part triggering
- » One click color calibration



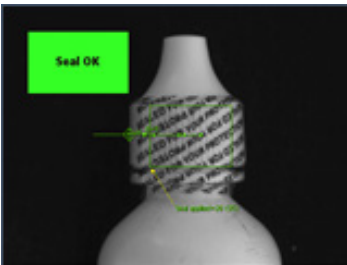
Factory Integration

- » Supports digital I/O, Serial and Ethernet communications for inter-facing 3rd party equipment
- » Compatible with many standard protocols such as Modbus, ProfiNet, and Ethernet/IP
- » Direct connect with Rockwell Automation Controllers
- » Factory ready User Interface that can be locked down to prevent unauthorized access
- » Visual Basic API for customers wishing to develop their own operator look and feel



Robust Tools & Communication

- » Graphical point and click interface accessed via web browser or local keyboard and mouse
- » Localized with different languages
- » Easy camera, trigger and lighting setup via slider controls
- » Versatile icon driven tool palette
- » Flexible communication options
- » Administration control and data logging
- » Emulator for offline application development



Typical Applications

- » Detect missing or incorrect components in a package or assembly
- » Track or verify products – barcode, 2D matrix, printed text
- » Verify label position, fill level, cap and safety seal on bottles
- » Align PCBs – locate and report position of fiducials
- » Locate and count objects or features
- » Verify adhesive bead integrity & uniformity
- » Detect short shots in plastic molded parts
- » Detect presence and integrity of pills in a blister pack

