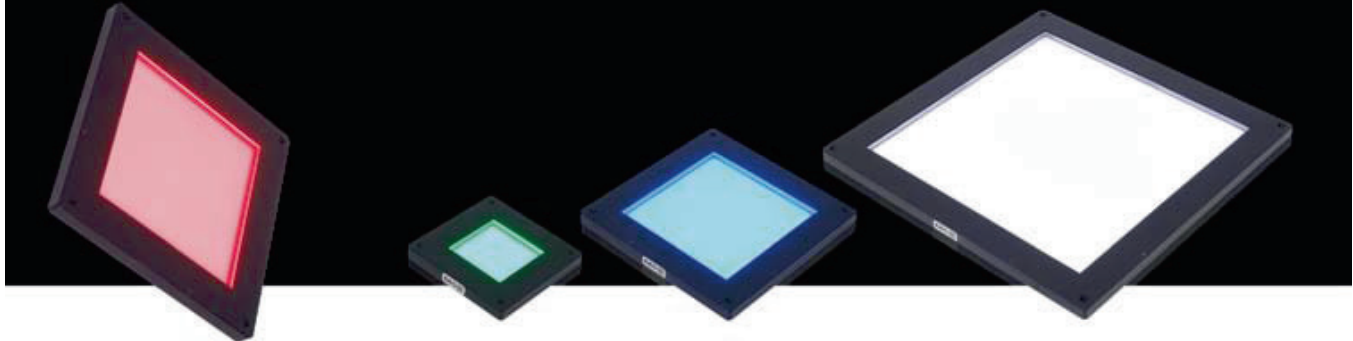


# Flat-Dome Lights

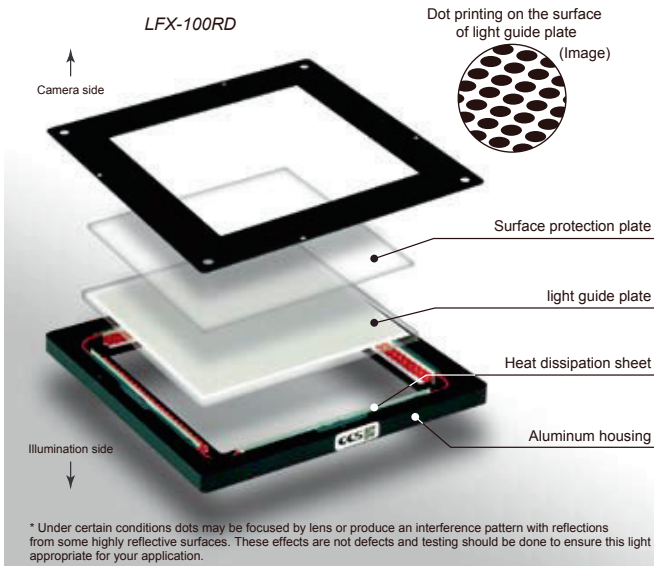
## LFX Series

Unique lighting technology allows either coaxial lighting or a dome effect depending on the working distance



### Unique lighting technology achieves uniform omni directional diffused light

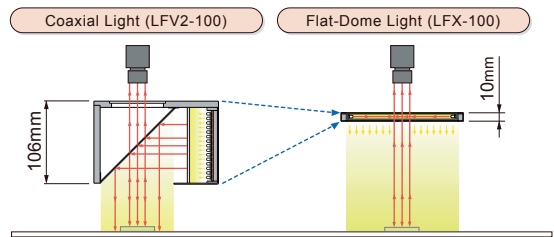
The special dotted-pattern reproduces the characteristics of a coaxial light or a dome light.



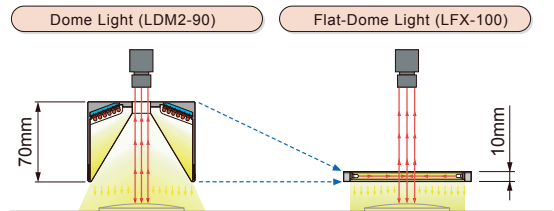
The LFX Series is a completely new type of light product enabled by CCS's cutting research and development capabilities. The pattern of dots on the surface of the light guiding diffuser plate controls light diffusion and transmission making uniform, omni-directional light possible.

### Lightweight, thin design enables installation in constrained spaces

The LFX-100 requires 96-mm less installation height than the comparable standard LFXV2-100 coaxial light with the same light-emitting surface.



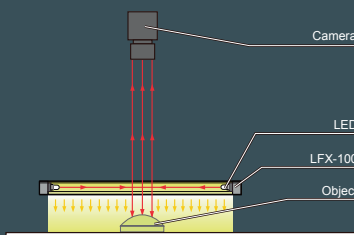
The LFX 100 requires 60-mm less installation height than the comparable standard LDM2-90 dome light with the same field of view.



Compared to coaxial lights and dome lights, the flat-dome lights have achieved lightweight and compact design. The flat-dome lights are designed to require thickness of only 10 mm.

### Illumination structure of LFX-100

LEDs mounted in the rim emit light through the light guiding diffuser plate and exit the surface as uniform omni directional diffused light.



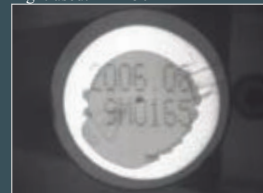
### Examples of Flat-Dome Light Images

Printed characters on food packaging film  
Ambient light image



When the light is too small or is too far away it behaves like a coaxial light, creating a uniform reflection only where the surface has sufficiently low curvature.

Light used: LFX-50RD



When an LFX flat dome is used very close to the part and is sufficiently large it eliminates shadows and uniformly illuminates the surface even on curved highly reflective objects.

Light used: LFX-100RD

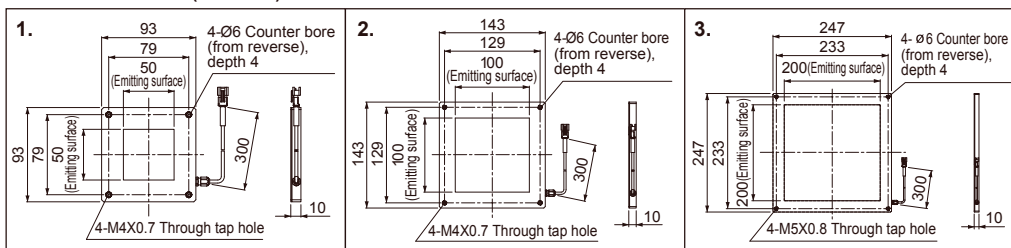


## Product Lineup Table

Series	Direct Number	Model Name	Color	Power Consumption	Option	Dimension
LFX	1002059	LFX-50RD	●	24V/2.4W	—	1
	1002060	LFX-50SW	○	24V/3.3W		
	1002057	LFX-50BL	●			
	1002058	LFX-50GR	●			
	1002050	LFX-100RD	●	24V/4.8W	—	2
	1002051	LFX-100SW	○	24V/6.5W		
	1002048	LFX-100BL	●			
	1002049	LFX-100GR	●			
	1002055	LFX-200RD	●	24V/9.6W	—	3
	1002056	LFX-200SW	○	24V/13W		
	1002052	LFX-200BL	●			
	1002053	LFX-200GR	●			

\*Red (RD) LFX Lights cannot be used in combination with CCS Strobe Power Supply Unit (PTU2 Series, etc.).

## Dimensions (Unit: mm)



## Examples of Flat-Dome Light Images

### Cans lid print and features

Ambient light image



With the LFX at distance of 10 mm from the light to the object the shadows from the non planar features on the lid a minimized and all but disappear.

Light used: LFX-100RD



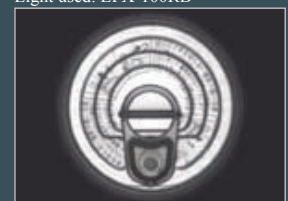
With the LFX at distance of 85 mm from the light to the object, the light is able to highlight the significantly raised pull-tab.

Light used: LFX-100RD



With the LFX at distance of 295 mm from the light to the object, the more collimated light shows the smaller ridges in the can surface clearly.

Light used: LFX-100RD



If you register as a CCS member, you can download all materials (such as PDF or DXF drawings and operation manuals) from our website. You can also request us to select the appropriate Light Unit, borrowing demonstration units and to quote the product's price. Please go ahead and register as a member today. (Refer to back cover of this brochure.)