

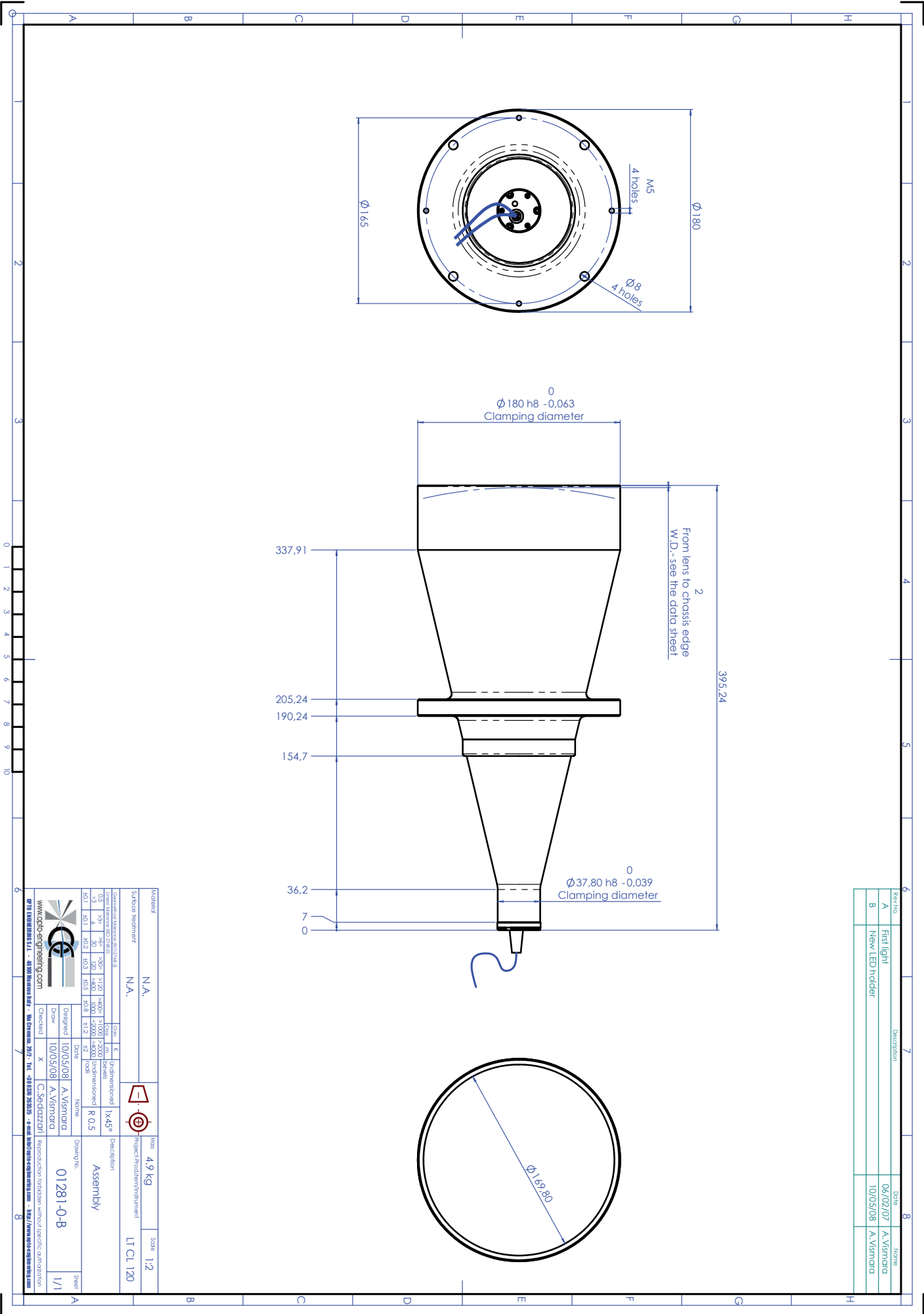
LT CL 120

Collimated Illuminator



part number	LT CL 120/X	
Beam Diameter	(mm)	150,0
Available Colours		
/R (red)		x
/G (green)		x
/B (blue)		
/W (white)		x
/IR890 (IR, peak 890 nm)		
/IR940 (IR, peak 940 nm)		
Length	(mm)	395,2
Outer Diameter	(mm)	180,0
Compatible Telecentric Lenses		
	TC 13	n.a.
	TC 12	120
	TC 23	110, 120
	TC 4M	110, 120
	TC 2M	120
	TC16M	120
DEVICE POWER RATINGS		
DC Voltage	(volt)	12 to 24
Power Consumption	(watt)	< 2 watt
LED DIRECT DRIVE RATINGS		
for /W, /B and /G versions		
Max Forward DC Voltage	(volt)	3,5
Max Forward Current	(mA)	350
for /R version		
Max Forward DC Voltage	(volt)	2,5
Max Forward Current	(mA)	350
for /IR890 and /IR940 versions		
Max Forward DC Voltage	(volt)	1,6
Max Forward Current	(mA)	500 mA

Mechanical drawings:
see next page >>



Rev.No.	Description	Date	Name
A	First light	06/02/07	A. Vismara
B	New LED holder	10/05/08	A. Vismara

Material	N.A.	Mass	4.9 Kg	Scale	1:2
Surface treatment	N.A.	Project/Modif/Rev/Numeri		LT CL 120	
Conventional tolerance ISO 2768-3		Drawn	A. Vismara	Description	Assembly
Linear tolerance ISO 2768-3		Drawn	A. Vismara	Drawn to	01281-0-B
Form tolerance ISO 1101		Checked	C. Sedozzi	Sheet	1/1
Surface texture ISO 4287		Design	A. Vismara	Project	
Surface texture ISO 4288		Draw	A. Vismara	Rev	
Surface texture ISO 4289		Checked	X	Num	

O-OPEN138-06/2013 · Subject to technical change without notice. No liability is accepted for errors which may be contained in this document.