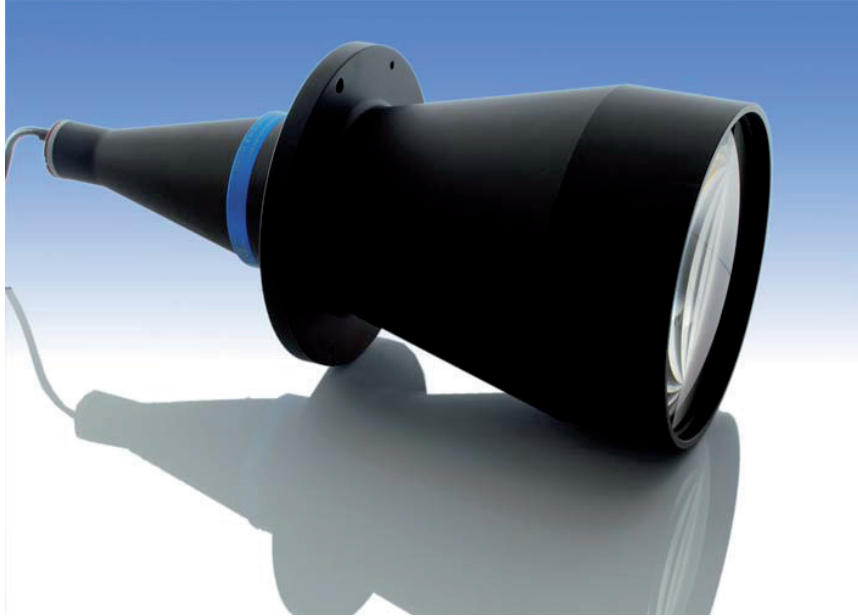


LT CL 144

Collimated Illuminator



part number		LT CL 144/X
Beam Diameter	(mm)	180,0
Available Colours		
/R (red)		x
/G (green)		x
/B (blue)		
/W (white)		
/IR890 (IR, peak 890 nm)		
/IR940 (IR, peak 940 nm)		
Length	(mm)	454,7
Outer Diameter	(mm)	200,0
Compatible Telecentric Lenses		
	TC 13	n.a.
	TC 12	144
	TC 23	130, 144
	TC 4M	130, 144
	TC 2M	144
	TC16M	144
DEVICE POWER RATINGS		
DC Voltage	(volt)	12 to 24
Power Consumption	(watt)	< 2 watt
LED DIRECT DRIVE RATINGS		
for /W, /B and /G versions		
Max Forward DC Voltage	(volt)	3,5
Max Forward Current	(mA)	350
for /R version		
Max Forward DC Voltage	(volt)	2,5
Max Forward Current	(mA)	350
for /IR890 and /IR940 versions		
Max Forward DC Voltage	(volt)	1,6
Max Forward Current	(mA)	500 mA

Mechanical drawings:
see next page >>

