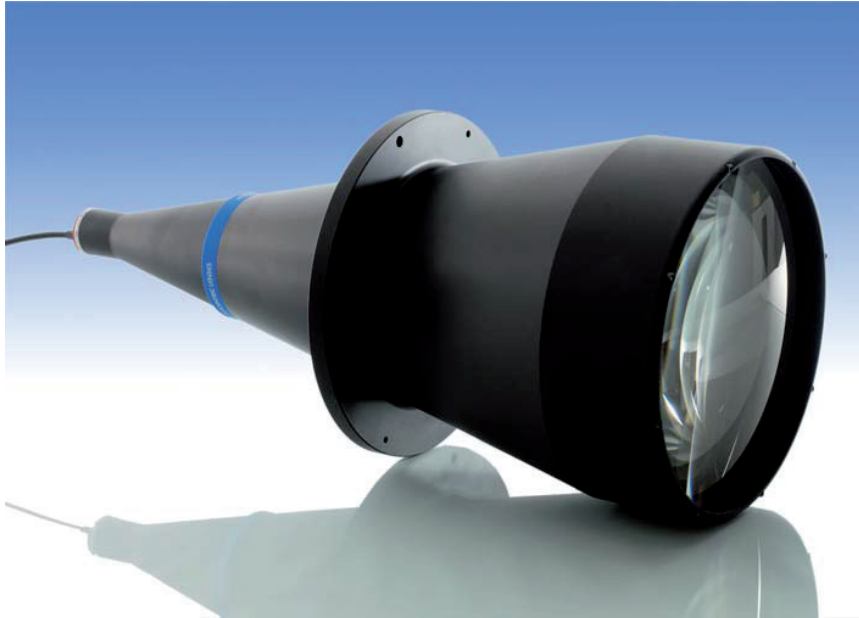


LT CL 192

Collimated Illuminator



part number	LT CL 192/X	
Beam Diameter	(mm)	250,0
Available Colours		
/R (red)		x
/G (green)		x
/B (blue)		
/W (white)		
/IR890 (IR, peak 890 nm)		
/IR940 (IR, peak 940 nm)		
Length	(mm)	595,1
Outer Diameter	(mm)	260,0
Compatible Telecentric Lenses		
	TC 13	n.a.
	TC 12	192
	TC 23	172, 192
	TC 4M	172, 192
	TC 2M	192
	TC16M	n.a.
DEVICE POWER RATINGS		
DC Voltage	(volt)	12 to 24
Power Consumption	(watt)	< 2 watt
LED DIRECT DRIVE RATINGS		
for /W, /B and /G versions		
Max Forward DC Voltage	(volt)	3,5
Max Forward Current	(mA)	350
for /R version		
Max Forward DC Voltage	(volt)	2,5
Max Forward Current	(mA)	350
for /IR890 and /IR940 versions		
Max Forward DC Voltage	(volt)	1,6
Max Forward Current	(mA)	500 mA

Mechanical drawings:
see next page >>

