

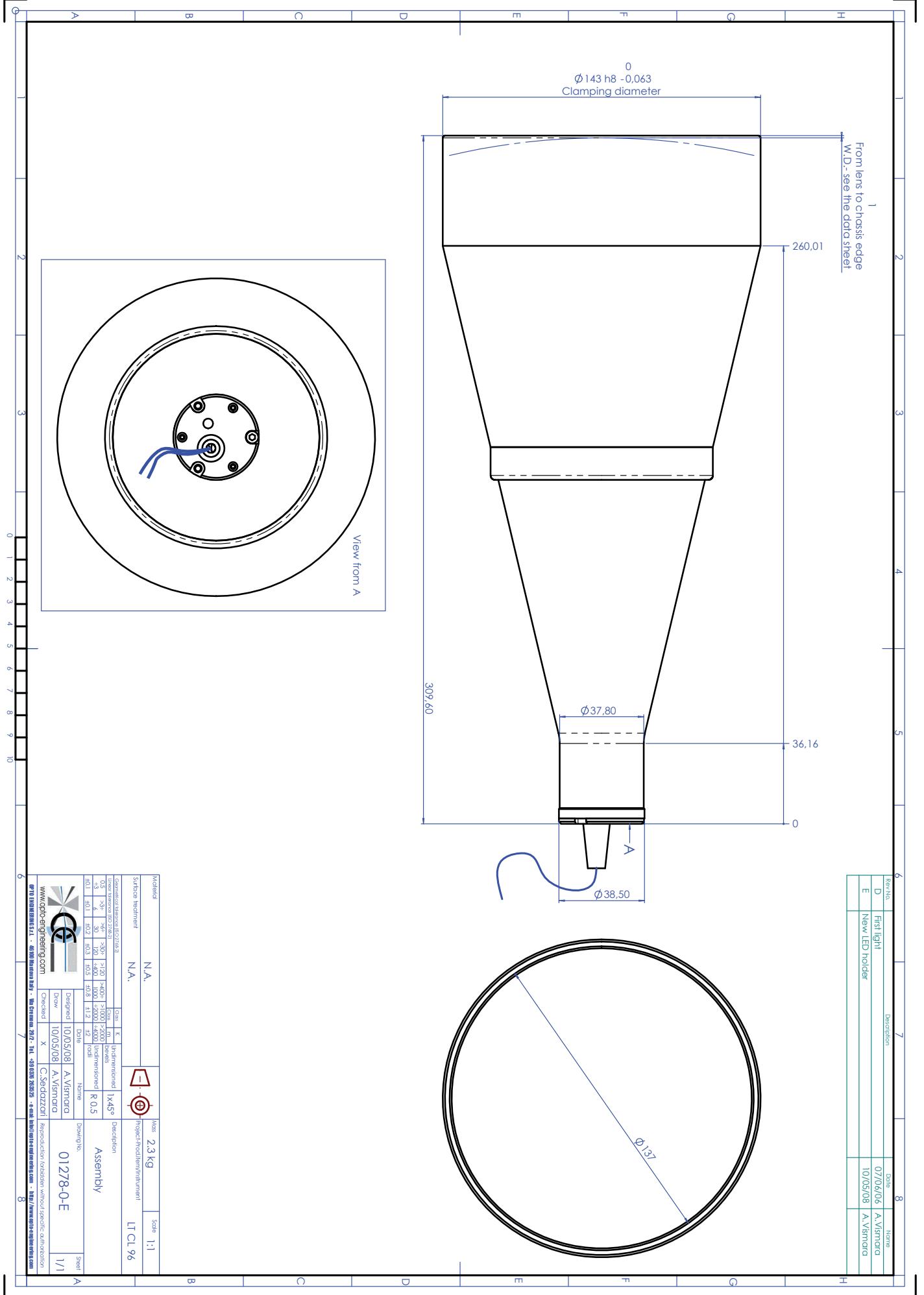
LT CL 96

Collimated Illuminator



part number	LT CL 96/X	
Beam Diameter	(mm)	120,0
Available Colours		
/R (red)		x
/G (green)		x
/B (blue)		x
/W (white)		x
/IR890 (IR, peak 890 nm)		x
/IR940 (IR, peak 940 nm)		
Length	(mm)	309,6
Outer Diameter	(mm)	143,0
Compatible Telecentric Lenses		
	TC 13	96
	TC 12	96
	TC 23	85, 96
	TC 4M	85, 96
	TC 2M	96
	TC16M	96
DEVICE POWER RATINGS		
DC Voltage	(volt)	12 to 24
Power Consumption	(watt)	< 2 watt
LED DIRECT DRIVE RATINGS		
for /W, /B and /G versions		
Max Forward DC Voltage	(volt)	3,5
Max Forward Current	(mA)	350
for /R version		
Max Forward DC Voltage	(volt)	2,5
Max Forward Current	(mA)	350
for /IR890 and /IR940 versions		
Max Forward DC Voltage	(volt)	1,6
Max Forward Current	(mA)	500 mA

Mechanical drawings:
see next page >>



Rev. No.	Description	Date	Name
D	First light	07/06/06	A. Vismara
E	New LED holder	10/05/08	A. Vismara

Material	N.A.	Mass	2,3 Kg	Scale	1:1
Surface treatment	N.A.	Project/Prod/Inv/Int/Num/1		LT CL 96	
Conformity Standard ISO 9001:2008		Drawn	A. Vismara	Description	
Order reference 01278-0-E		Checked	C. Sedozzi	Assembly	
3-3	30	120	1000	10/05/08	01278-0-E
40,1	40,2	40,3	40,5	40,8	41,2
42	42	42	42	42	42
10/05/08	10/05/08	10/05/08	10/05/08	10/05/08	10/05/08
1/1	1/1	1/1	1/1	1/1	1/1