

TC 16M 036

1x Telecentric Lens for 35mm-type and line Detectors (43 mm diagonal)



part number		TC 16M 0036
Magnification		1,00 +/- 0,2%
Field Of View	(mm)	
with 36 x 24 mm detector		36,0 x 24,0 (*)
with 8k x 5 µm detector		41,0
with 4k x 7 µm detector		28,7
with 2k x 10 µm detector		20,5
Working Distance	(mm)	103,0 +/- 2
Working F-number		16
Telecentricity typical (max)	(degree)	< 0,03 (0,05)
Distortion typical (max)	(%)	< 0,02 (0,03)
Field Depth	(mm)	1,0
CTF @50 lp/mm	(%)	> 30
Image side N.A.		0,031
Object side N.A.		0,031
Mount		F (*)
Length	(mm)	309
External diameter	(mm)	61,0
Weight	(g)	1050

(*) With the F-mount, the FOV with 36 x 24 mm detectors is vignetted at the corners: different mounts can be mounted in order to fit camera mechanics without vignetting effects.

ACCESSORIES AND OPTIONS:

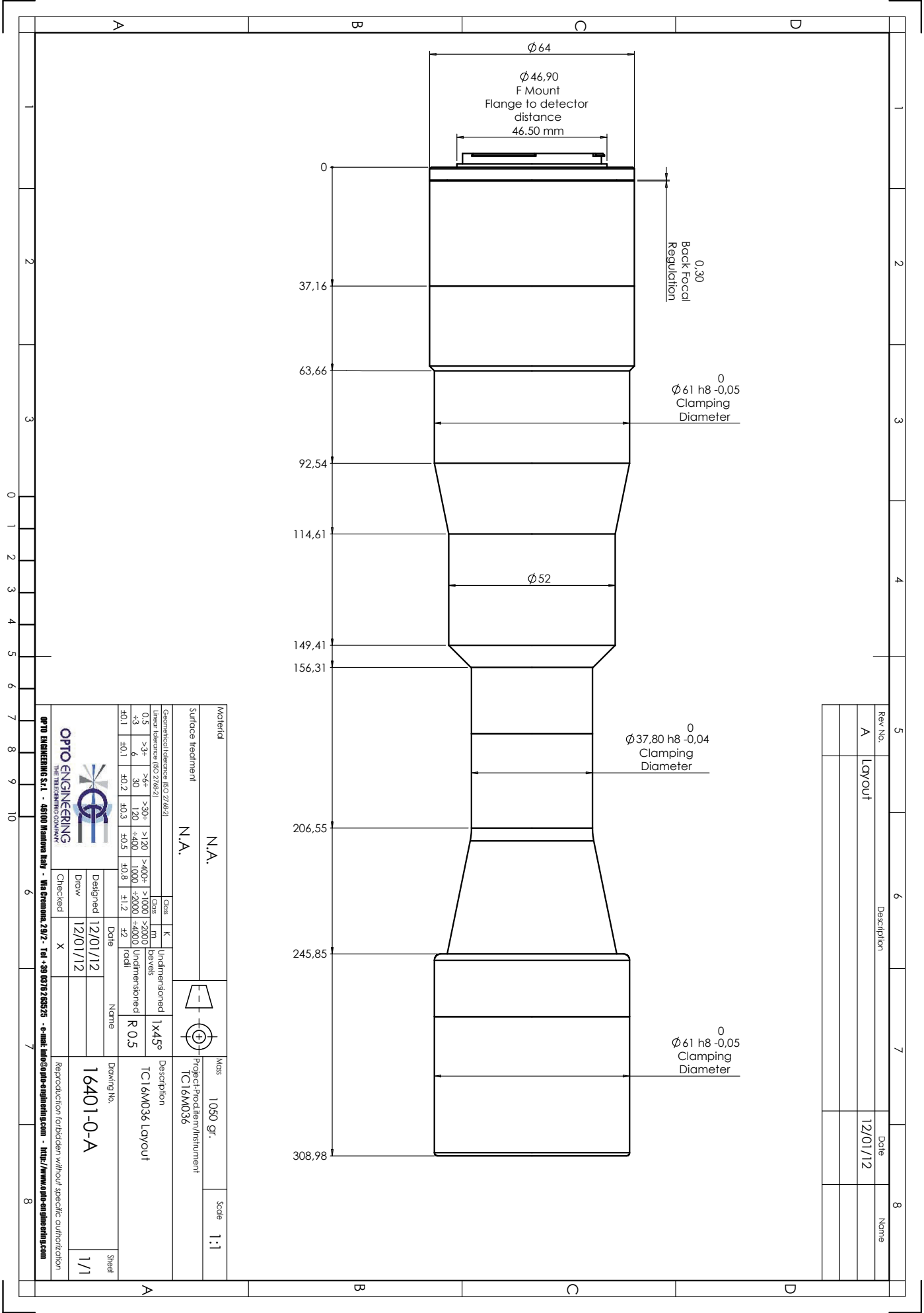


Collimated/Telecentric illumination:
Compatible with LTCL36 illuminator;
green light suggested.



Clamping Mechanics:
Compatible with CMH036.

Mechanical drawings:
see next page >>



Rev. No.	Description	Date	Name
A	Layout	12/01/12	

Material		N.A.		Mass		1050 gr.		Scale		1:1	
Surface treatment		N.A.		Project/Product/Instrument		TC16M036					
Geometrical tolerance (ISO 2768-2)				Description		TC16M036 Layout					
Linear tolerance (ISO 2768-2)				Drawing No.		16401-0-A					
0,5	>3x	>6x	>30x	>120	>400x	>1000	>2000				
+3	6	30	120	+400	1000	+2000	+4000				
f0,1	f0,1	f0,2	f0,3	f0,5	f0,8	f1,2	f2				
Class		K		Undimensioned		Bevels					
Class		M		Undimensioned		R 0,5					
Date		12/01/12		Name		16401-0-A					
Designed		12/01/12		Checked		X					
Draw		12/01/12		Sheet		1/1					

O-OPEN52-06/2013 · Subject to technical change without notice. No liability is accepted for errors which may be contained in this document.