

TC 16M 048

0,75x Telecentric Lens for 35mm-type and line Detectors (43 mm diagonal)



| part number | | TC 16M 048 |
|-------------------------------------|----------|---------------|
| Magnification | | 0,751 +/- 3% |
| Field Of View | (mm) | |
| with 36 x 24 mm detector | | 48,0 x 32,0 |
| with 8k x 5 µm detector | | 54,6 |
| with 4k x 7 µm detector | | 38,2 |
| with 2k x 10 µm detector | | 27,3 |
| Working Distance | (mm) | 127,0 +/- 4 |
| Working F-number | | 16 |
| Telecentricity typical (max) | (degree) | < 0,06 (0,10) |
| Distortion typical (max) | (%) | < 0,05 (0,10) |
| Field Depth | (mm) | 2,0 |
| CTF @50 lp/mm | (%) | > 30 |
| Image side N.A. | | 0,031 |
| Object side N.A. | | 0,023 |
| Mount | | F |
| Length | (mm) | 315,2 |
| External diameter | (mm) | 75,0 |
| Weight | (g) | 1000 |

ACCESSORIES AND OPTIONS:

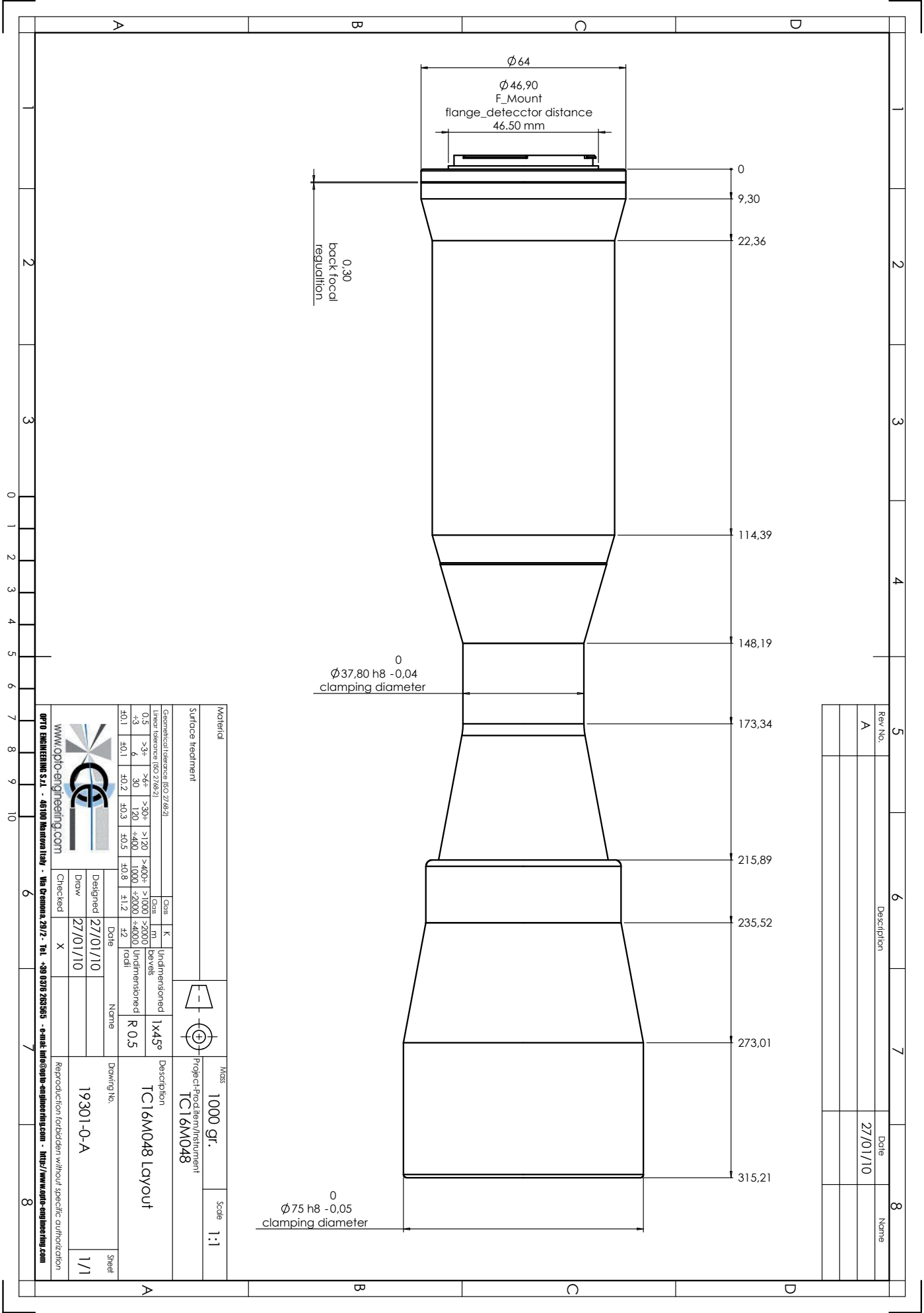


Collimated/Telecentric illumination:
Compatible with LTCL48 illuminator;
green light suggested.



Clamping Mechanics:
Compatible with CMH048.

Mechanical drawings:
see next page >>



| Rev.No. | Description | Date | Name |
|---------|-------------|----------|------|
| A | | 27/01/10 | |

| | | | | | |
|---|------|----------------------------|------|---|-------|
| Material | | Mass | | Scale | |
| Surface treatment | | 1000 gr. | | 1:1 | |
| Geometrical tolerance (ISO 2768-2) | | Project/Product/Instrument | | TC16M048 | |
| Linear tolerance (ISO 2768-2) | | Description | | TC16M048 Layout | |
| 0.5 | >3+ | >6+ | >30+ | >120 | >400+ |
| +3 | -3 | 6 | 30 | 120 | +400 |
| f0.1 | f0.1 | f0.2 | f0.3 | f0.5 | f0.8 |
| Class | | K | | Undimensioned | |
| m | | m | | Bevels | |
| 1:12 | | 42 | | R 0.5 | |
| Date | | Name | | Drawing No. | |
| 27/01/10 | | 19301-0-A | | Sheet | |
| Draw | | Checked | | 1/1 | |
| 27/01/10 | | X | | Reproduction forbidden without specific authorization | |
| www.opto-engineering.com | | www.opto-engineering.com | | www.opto-engineering.com | |
| OPTO ENGINEERING S.r.l. - 46100 Madonna Lupa - Via Gemina 29/2 - Tel. +39 0775 282565 - e-mail: info@opto-engineering.com - http://www.opto-engineering.com | | | | | |

O-OPEN53-06/2013 · Subject to technical change without notice. No liability is accepted for errors which may be contained in this document.