



## TC 16M 056

# 0,64x Telecentric Lens for 35mm-type and line Detectors (43 mm diagonal)



| part number                         | TC 16M 056   |               |
|-------------------------------------|--------------|---------------|
| <b>Magnification</b>                | 0,641 +/- 3% |               |
| <b>Field Of View</b>                |              |               |
| with 36 x 24 mm detector            | (mm)         | 56,2 x 37,5   |
| with 8k x 05 µm detector            |              | 63,9          |
| with 4k x 7 µm detector             |              | 44,7          |
| with 2k x 10 µm detector            |              | 31,9          |
| <b>Working Distance</b>             | (mm)         | 150,0 +/- 5   |
| <b>Working F-number</b>             | 16           |               |
| <b>Telecentricity typical (max)</b> | (degree)     | < 0,04 (0,08) |
| <b>Distortion typical (max)</b>     | (%)          | < 0,04 (0,10) |
| <b>Field Depth</b>                  | (mm)         | 2,5           |
| <b>CTF @50 lp/mm</b>                | (%)          | > 40          |
| <b>Image side N.A.</b>              | 0,031        |               |
| <b>Object side N.A.</b>             | 0,020        |               |
| <b>Mount</b>                        | F            |               |
| <b>Length</b>                       | (mm)         | 338,5         |
| <b>External diameter</b>            | (mm)         | 80,0          |
| <b>Weight</b>                       | (g)          | 1250          |

### ACCESSORIES AND OPTIONS:

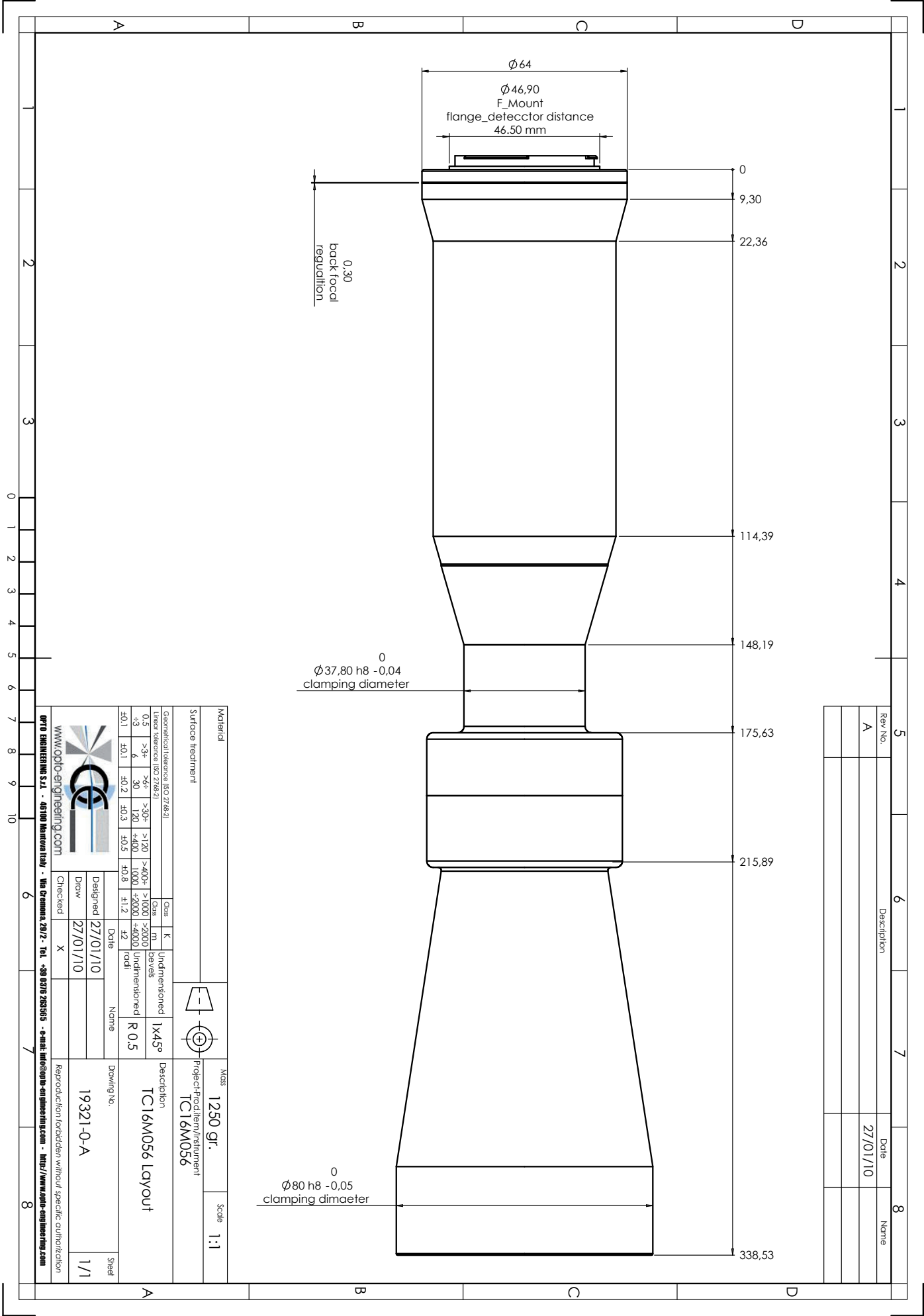


**Collimated/Telecentric illumination:**  
Compatible with LTCL56 illuminator;  
green light suggested.



**Clamping Mechanics:**  
Compatible with CMH056.

Mechanical drawings:  
see next page >>



0,30  
back focal  
requisition

0  
Ø37,80 h8 -0,04  
clamping diameter

0  
Ø80 h8 -0,05  
clamping diameter

| Rev.No. | Description | Date     | Name |
|---------|-------------|----------|------|
| A       |             | 27/01/10 |      |

|                                    |      |                            |      |               |       |
|------------------------------------|------|----------------------------|------|---------------|-------|
| Material                           |      | Mass                       |      | Scale         |       |
| Surface treatment                  |      | 1250 gr.                   |      | 1:1           |       |
| Geometrical tolerance (ISO 2768-2) |      | Project/Product/Instrument |      | TC16M056      |       |
| Linear tolerance (ISO 2768-2)      |      | TC16M056 Layout            |      |               |       |
| 0,5                                | >3x  | >6x                        | >120 | >400x         | >1000 |
| +3                                 | -3x  | 30                         | 120  | +400          | 1000  |
| f0.1                               | f0.1 | f0.2                       | f0.3 | f0.5          | f0.8  |
|                                    |      |                            |      |               |       |
| Class                              |      | K                          |      | Undimensioned |       |
| Class                              |      | m                          |      | Bevels        |       |
| Class                              |      | z2                         |      | Undimensioned |       |
| Class                              |      | z2                         |      | Total         |       |
| Name                               |      | R 0,5                      |      |               |       |
| Date                               |      | 27/01/10                   |      | Designed      |       |
| Date                               |      | 27/01/10                   |      | Draw          |       |
| Name                               |      | X                          |      | Checked       |       |
| Drawing No.                        |      | 19321-0-A                  |      | Sheet         |       |
| Drawing No.                        |      | 19321-0-A                  |      | 1/1           |       |

www.opto-engineering.com  
 OPTO ENGINEERING S.r.l. - 46100 Madonna Lupa - Via Gemina 29/2 - Tel. +39 0776 282565 - e-mail: info@opto-engineering.com - http://www.opto-engineering.com

WWW.STEMMER-IMAGING.COM · IMAGING IS OUR PASSION

O-OPEN54-06/2013 · Subject to technical change without notice. No liability is accepted for errors which may be contained in this document.