

## TC 16M 064

# 0,56x Telecentric Lens for 35mm-type and line Detectors (43 mm diagonal)



part number		TC 16M 064
<b>Magnification</b>		0,561 +/- 3%
<b>Field Of View</b>		
with 36 x 24 mm detector	(mm)	64,3 x 42,9
with 8k x 5 µm detector		73,1
with 4k x 7 µm detector		51,1
with 2k x 10 µm detector		36,5
<b>Working Distance</b>	(mm)	171,0 +/- 5
<b>Working F-number</b>		16
<b>Telecentricity typical (max)</b>	(degree)	< 0,04 (0,08)
<b>Distortion typical (max)</b>	(%)	< 0,06 (0,15)
<b>Field Depth</b>	(mm)	4,0
<b>CTF @50 lp/mm</b>	(%)	> 30
<b>Image side N.A.</b>		0,031
<b>Object side N.A.</b>		0,017
<b>Mount</b>		F
<b>Length</b>	(mm)	358,6
<b>External diameter</b>	(mm)	100,0
<b>Weight</b>	(g)	1380

### ACCESSORIES AND OPTIONS:

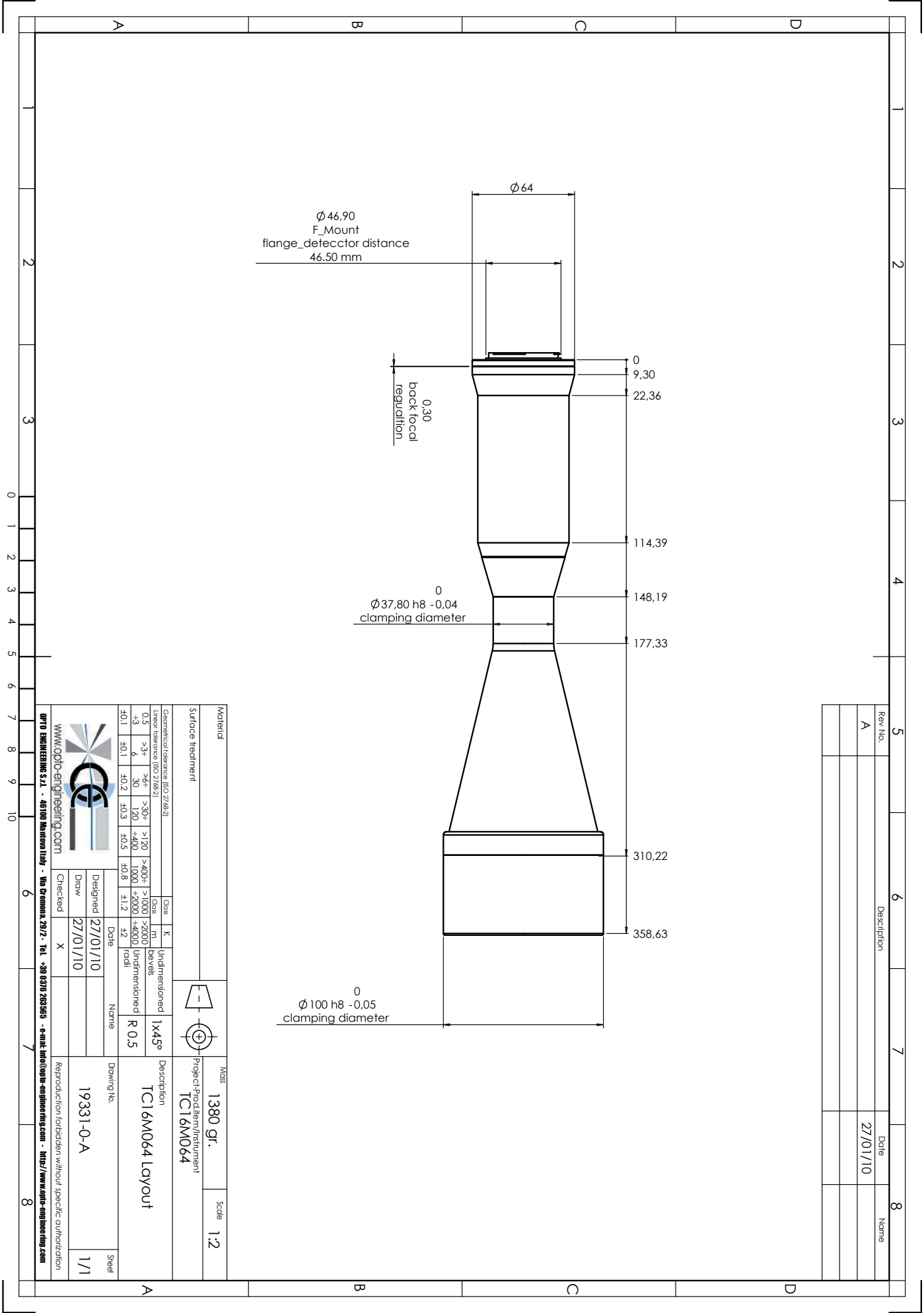


**Collimated/Telecentric illumination:**  
Compatible with LTCL64 illuminator;  
green light suggested.



**Clamping Mechanics:**  
Compatible with CMH064.

Mechanical drawings:  
see next page >>



Ø 46,90  
F\_Mount  
flange\_detector distance  
46.50 mm

0  
9,30  
22,36  
0,30  
back focal  
regulation

0  
Ø 37,80 h8 -0,04  
clamping diameter  
114,39  
148,19  
177,33

0  
Ø 100 h8 -0,05  
clamping diameter  
310,22  
358,63

Rev.No.	Description	Date	Name
A		27/01/10	

Material		Mass		Scale	
Surface treatment		1380 gr.		1:2	
Geometrical tolerance (ISO 2768-2)		Project/ProdItem/Instrument		TC16M064	
Linear tolerance (ISO 2768-2)	Class	K	Undimensioned	1x45°	
0,5	>3x	>6x	>120	>400x	>1000
+3	6	30	120	+400	1000
f0.1	f0.1	f0.2	f0.3	f0.5	f0.8
www.opto-engineering.com		Date		Name	
Designed		27/01/10		19331-0-A	
Draw		27/01/10		Sheet	
Checked		X		1/1	
Reproduction forbidden without specific authorization					

O-OPEN55-06/2013 - Subject to technical change without notice. No liability is accepted for errors which may be contained in this document.