



## TC 16M 080

# 0,46x Telecentric Lens for 35mm-type and line Detectors (43 mm diagonal)



part number	TC 16M 080	
<b>Magnification</b>		0,463 +/- 3%
<b>Field Of View</b>	(mm)	
with 36 x 24 mm detector		77,8 x 51,9
with 8k x 5 µm detector		88,4
with 4k x 7 µm detector		61,9
with 2k x 10 µm detector		44,2
<b>Working Distance</b>	(mm)	198,0 +/- 6
<b>Working F-number</b>		16
<b>Telecentricity typical (max)</b>	(degree)	< 0,03 (0,08)
<b>Distortion typical (max)</b>	(%)	< 0,09 (0,20)
<b>Field Depth</b>	(mm)	5,0
<b>CTF @50 lp/mm</b>	(%)	> 30
<b>Image side N.A.</b>		0,031
<b>Object side N.A.</b>		0,014
<b>Mount</b>		F
<b>Length</b>	(mm)	405,4
<b>External diameter</b>	(mm)	116,0
<b>Weight</b>	(g)	1840

### ACCESSORIES AND OPTIONS:

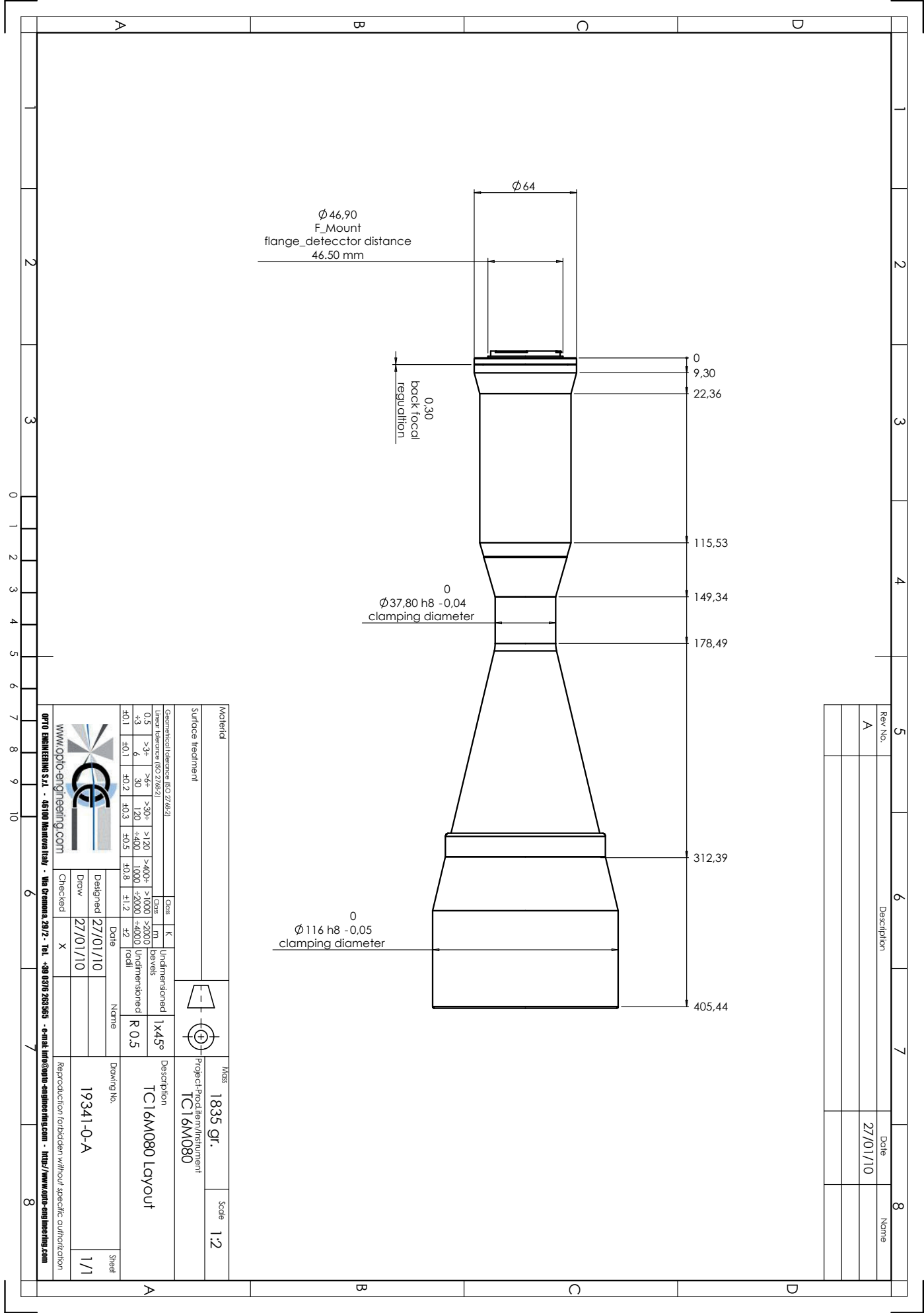


**Collimated/Telecentric illumination:**  
Compatible with LTCL80 illuminator;  
green light suggested.



**Clamping Mechanics:**  
Compatible with CMH080.

Mechanical drawings:  
see next page >>



Rev.No.	Description	Date	Name
A		27/01/10	

Material		Mass		Scale	
Surface treatment		1835 gr.		1:2	
Geometrical tolerance (ISO 2768/2)		Project/ProdItem/Instrument		TC16M080 Layout	
0,5	>3x	>6x	>120	>400+	>1000
+3	6	30	120	+400	1000
f0,1	f0,1	f0,2	f0,3	f0,5	f0,8
Class	K	Undimensioned	1x45°	Description	
Class	m	Bevels	R 0,5	Project/ProdItem/Instrument	
Class	M	Undimensioned		TC16M080	
Class	z2	Undimensioned		Drawing No.	
Date		Name		19341-0-A	
27/01/10				Sheet	
27/01/10				1/1	
Checked		X		Reproduction forbidden without specific authorization	
www.optics-engineering.com					
OPTIC ENGINEERING S.R.L. - 46100 Madonna Lupa - Via Gemina 29/2 - Tel. +39 0776 282565 - e-mail: info@optics-engineering.com - http://www.optics-engineering.com					

O-OPEN56-06/2013 · Subject to technical change without notice. No liability is accepted for errors which may be contained in this document.

WWW.STEMMER-IMAGING.COM · IMAGING IS OUR PASSION