

TC 2M 24

Bi-Telecentric Lens for Large Detectors up to 1" (16 mm diagonal)

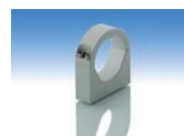


part number		TC 2M 24 (/C/F)
Magnification		0,510 +/- 3%
Field Of View	(mm)	
with KAI-02020		23,2 x 17,4
with KAI-04050		25,1 x 18,8
Working Distance	(mm)	69,2 +/- 2
Working F-number		16
Telecentricity typical (max)	(degree)	< 0,08 (0,10)
Distortion typical (max)	(%)	< 0,07 (0,10)
Field Depth	(mm)	4,0
CTF @50 lp/mm	(%)	> 30
Image side N.A.		0,0310
Object side N.A.		0,0160
Mount		C or F
Length	(mm)	222,8
External diameter	(mm)	44,0
Weight	(g)	770

ACCESSORIES AND OPTIONS:

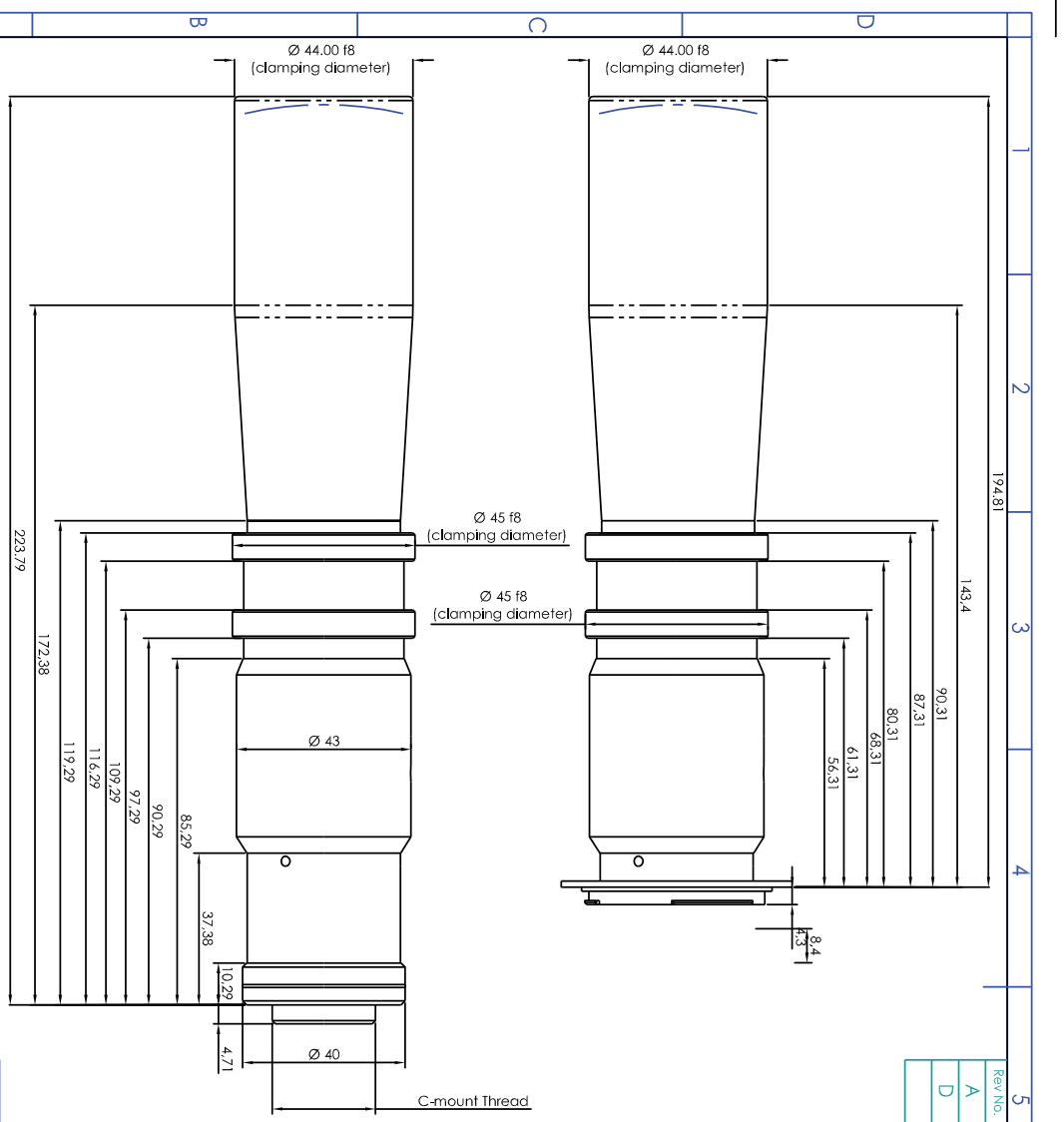


Collimated/Telecentric illumination:
Compatible with LTCL24 illuminator;
green light suggested.



Clamping Mechanics:
Compatible with CMH024.

Mechanical drawings:
see next page >>



TC 2M 24/F (F-mount)

TC 2M 24/C (C-mount)

Rev.No.	Description	Date	Name
A	First light	01/05/03	A. Vismara
D	Redesign	18/07/06	A. Vismara

Material	N.A.	Mass	0.41 kg	Scale	1:1
Surface treatment	N.A.	Project/ProdItem/Instrument	Telecentric lens TC2M24		

Geometrical tolerance (ISO 2768-2)	Class	K	Undimensioned	Dimensioned
0.3	>3*	6*	>120	>400*
+3	6	30	120	+400
±0.1	±0.1	±0.2	±0.3	±0.5
		±2	±1.2	
			±2	total
			R 0.5	

Designed	18/07/06	A. Vismara	Drawing No.	18323-0-A-TC2M24	Sheet
Drow	18/07/06	A. Vismara			
Checked	X	C. Sedozzi			

OTFO ENGINEERING S.r.l. - 46010 Marone (MN) - Via Gramsci, 28 - Tel. +39 0376 223965 - e-mail: info@otfo-engineering.com - http://www.otfo-engineering.com