

TC 2M 64

Bi-Telecentric Lens for Large Detectors up to 1" (16 mm diagonal)



| part number | | TC 2M 64 (/C/F) |
|-------------------------------------|----------|-----------------|
| Magnification | | 0,200 +/- 3% |
| Field Of View | (mm) | |
| with KAI-02020 | | 59,2 x 44,4 |
| with KAI-04050 | | 64,0 x 48,0 |
| Working Distance | (mm) | 182,3 +/- 5 |
| Working F-number | | 16 |
| Telecentricity typical (max) | (degree) | < 0,04 (0,10) |
| Distortion typical (max) | (%) | < 0,05 (0,10) |
| Field Depth | (mm) | 29,0 |
| CTF @50 lp/mm | (%) | > 30 |
| Image side N.A. | | 0,0310 |
| Object side N.A. | | 0,0062 |
| Mount | | C or F |
| Length | (mm) | 330,9 |
| External diameter | (mm) | 100,0 |
| Weight | (g) | 1400 |

ACCESSORIES AND OPTIONS:

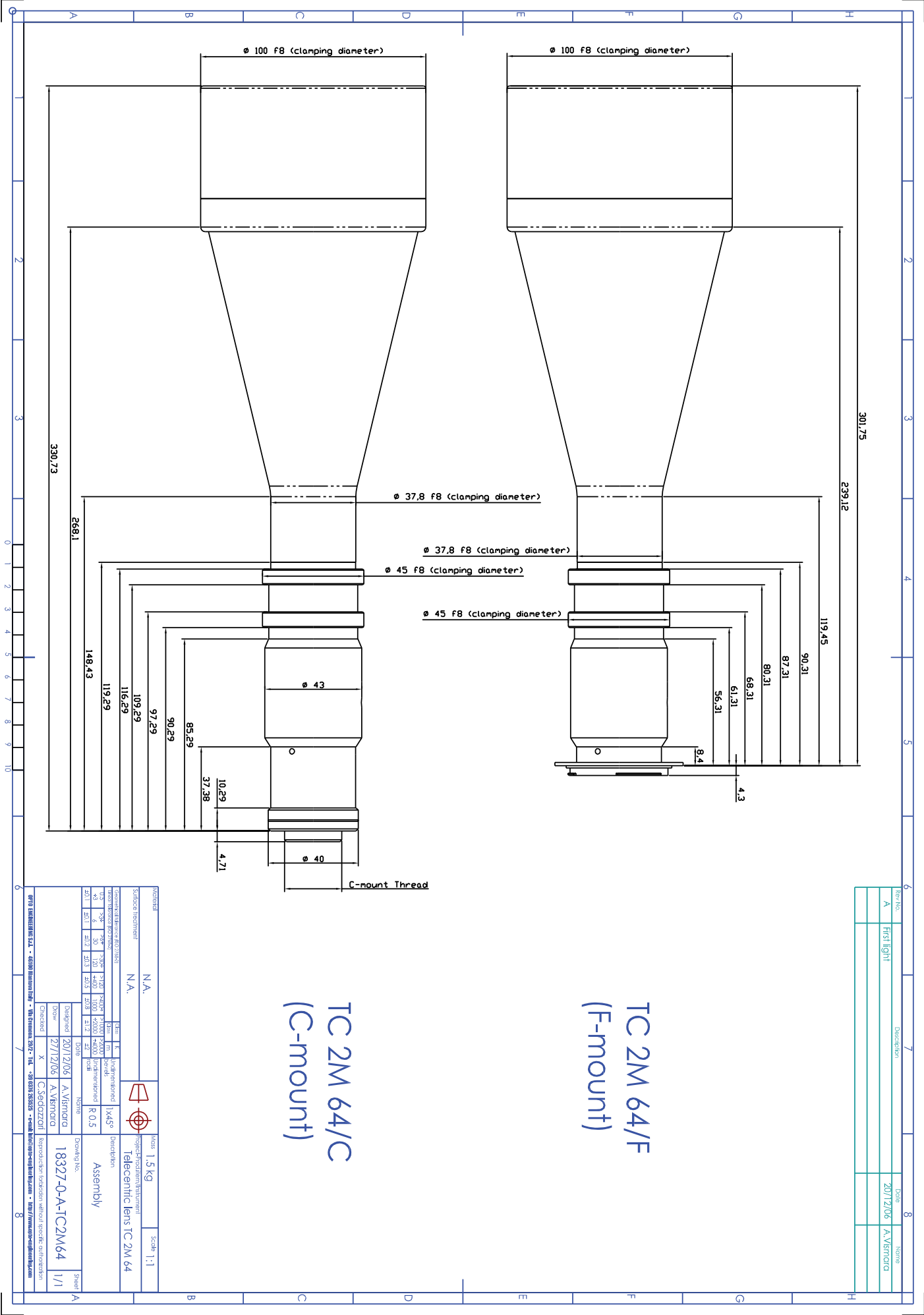


Collimated/Telecentric illumination:
Compatible with LTCL64 illuminator;
green light suggested.



Clamping Mechanics:
Compatible with CMHO64.

Mechanical drawings:
see next page >>



TC 2M 64/C
(C-mount)

TC 2M 64/F
(F-mount)

| Rev. No. | Description | Date | Name |
|----------|-------------|----------|-------------|
| A | First Light | 20/12/06 | A. Virmoira |
| | | | |
| | | | |

| | | | | | | | | | | | | | | | | | | | | | |
|--------------------------|--|------------------|--|------|--|------|--|------|--|------|--|------|--|------|--|------|--|------|--|------|--|
| Material | | N.A. | | N.A. | | N.A. | | N.A. | | N.A. | | N.A. | | N.A. | | N.A. | | N.A. | | N.A. | |
| Surface treatment | | N.A. | | N.A. | | N.A. | | N.A. | | N.A. | | N.A. | | N.A. | | N.A. | | N.A. | | N.A. | |
| Technical specifications | | N.A. | | N.A. | | N.A. | | N.A. | | N.A. | | N.A. | | N.A. | | N.A. | | N.A. | | N.A. | |
| Drawing No. | | 18327-0-A-TC2M64 | | 1/1 | | 1/1 | | 1/1 | | 1/1 | | 1/1 | | 1/1 | | 1/1 | | 1/1 | | 1/1 | |

O-OPEN45-06/2013 · Subject to technical change without notice. No liability is accepted for errors which may be contained in this document.