

TC 4M 04

Bi-Telecentric Lens for Large Detectors up to 1.2" (21.5 mm diagonal)



part number		TC 4M 04 (C/F)
Magnification		4,000 +/- 3%
Field Of View	(mm)	
with KAI-02020		3,0 x 2,2
with KAI-04050		3,2 x 2,4
with KAI-04022/4021		3,8 x 3,8
with KAI-08050		4,5 x 3,4
Working Distance	(mm)	57,1 +/- 2
Working F-number		22
Telecentricity typical (max)	(degree)	< 0,08 (0,10)
Distortion typical (max)	(%)	< 0,08 (0,10)
Field Depth	(mm)	0,1
CTF @50 lp/mm	(%)	> 30
Image side N.A.		0,0225
Object side N.A.		0,0900
Mount		C or F
Length	(mm)	206,4
External diameter	(mm)	28,0
Weight	(g)	530

Possible vignetting at the image corners with KAI-08050 detectors

ACCESSORIES AND OPTIONS:

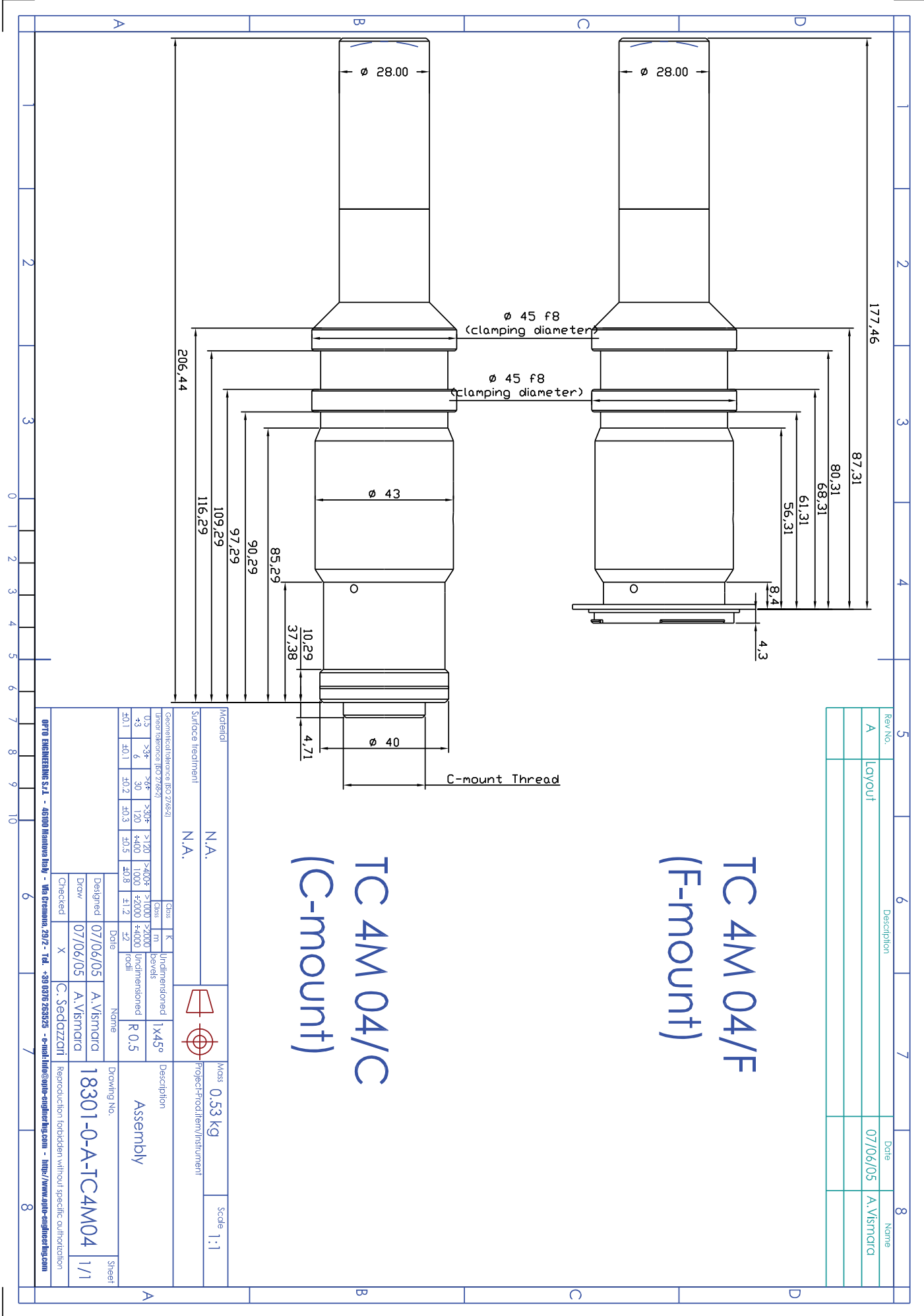


Collimated/Telecentric illumination:
Compatible with LTCL23 illuminator;
green light suggested.



Clamping Mechanics:
Compatible with CMH023.

Mechanical drawings:
see next page >>



TC 4M 04/F (F-mount)

TC 4M 04/C (C-mount)

Rev.No.	Description	Date	Name
A	Layout	07/06/05	A. Vismarica

Material		N.A.	
Surface treatment		N.A.	

Geometrical tolerance (ISO 2768-2)			
0.3	>3*	>6*	>30*
+3	6	30	120
+0.1	+0.1	+0.2	+0.3
			+0.5
			+0.8
			+1.2
			+2
			total

Class		K	
1	145°	1	145°
2	145°	2	145°
3	145°	3	145°
4	145°	4	145°
5	145°	5	145°
6	145°	6	145°
7	145°	7	145°
8	145°	8	145°
9	145°	9	145°
10	145°	10	145°