

TC 4M 07

Bi-Telecentric Lens for Large Detectors up to 1.2" (21.5 mm diagonal)



part number		TC 4M 07 (/C/F)
Magnification		2,667 +/- 3%
Field Of View	(mm)	
with KAI-02020		4,4 x 3,3
with KAI-04050		4,8 x 3,6
with KAI-04022/4021		5,7 x 5,7
with KAI-08050		6,8 x 5,1
Working Distance	(mm)	61,2 +/- 2
Working F-number		22
Telecentricity typical (max)	(degree)	< 0,08 (0,10)
Distortion typical (max)	(%)	< 0,06 (0,10)
Field Depth	(mm)	0,2
CTF @50 lp/mm	(%)	> 30
Image side N.A.		0,0225
Object side N.A.		0,0600
Mount		C or F
Length	(mm)	183,5
External diameter	(mm)	28,0
Weight	(g)	520

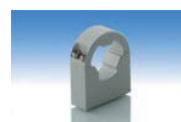
Possible vignetting at the image corners with KAI-08050 detectors

ACCESSORIES AND OPTIONS:



Collimated/Telecentric illumination:

Compatible with LTCL23 illuminator;
green light suggested.



Clamping Mechanics:

Compatible with CMH023.

Mechanical drawings:
see next page >>

