

## TC 4M 36

# Bi-Telecentric Lens for Large Detectors up to 1.2" (21.5 mm diagonal)



part number		TC 4M 36 (/C/F)
<b>Magnification</b>		0,487 +/- 3%
<b>Field Of View</b>	(mm)	
with KAI-02020		24,3 x 18,2
with KAI-04050		26,3 x 19,7
with KAI-04022/4021		31,1 x 31,1
with KAI-08050		37,2 x 27,9
<b>Working Distance</b>	(mm)	103,5 +/- 3
<b>Working F-number</b>		16
<b>Telecentricity typical (max)</b>	(degree)	< 0,04 (0,10)
<b>Distortion typical (max)</b>	(%)	< 0,06 (0,10)
<b>Field Depth</b>	(mm)	5,0
<b>CTF @50 lp/mm</b>	(%)	> 30
<b>Image side N.A.</b>		0,0310
<b>Object side N.A.</b>		0,0150
<b>Mount</b>		C or F
<b>Length</b>	(mm)	269,9
<b>External diameter</b>	(mm)	61,0
<b>Weight</b>	(g)	920

Possible vignetting at the image corners with KAI-08050 detectors

### ACCESSORIES AND OPTIONS:

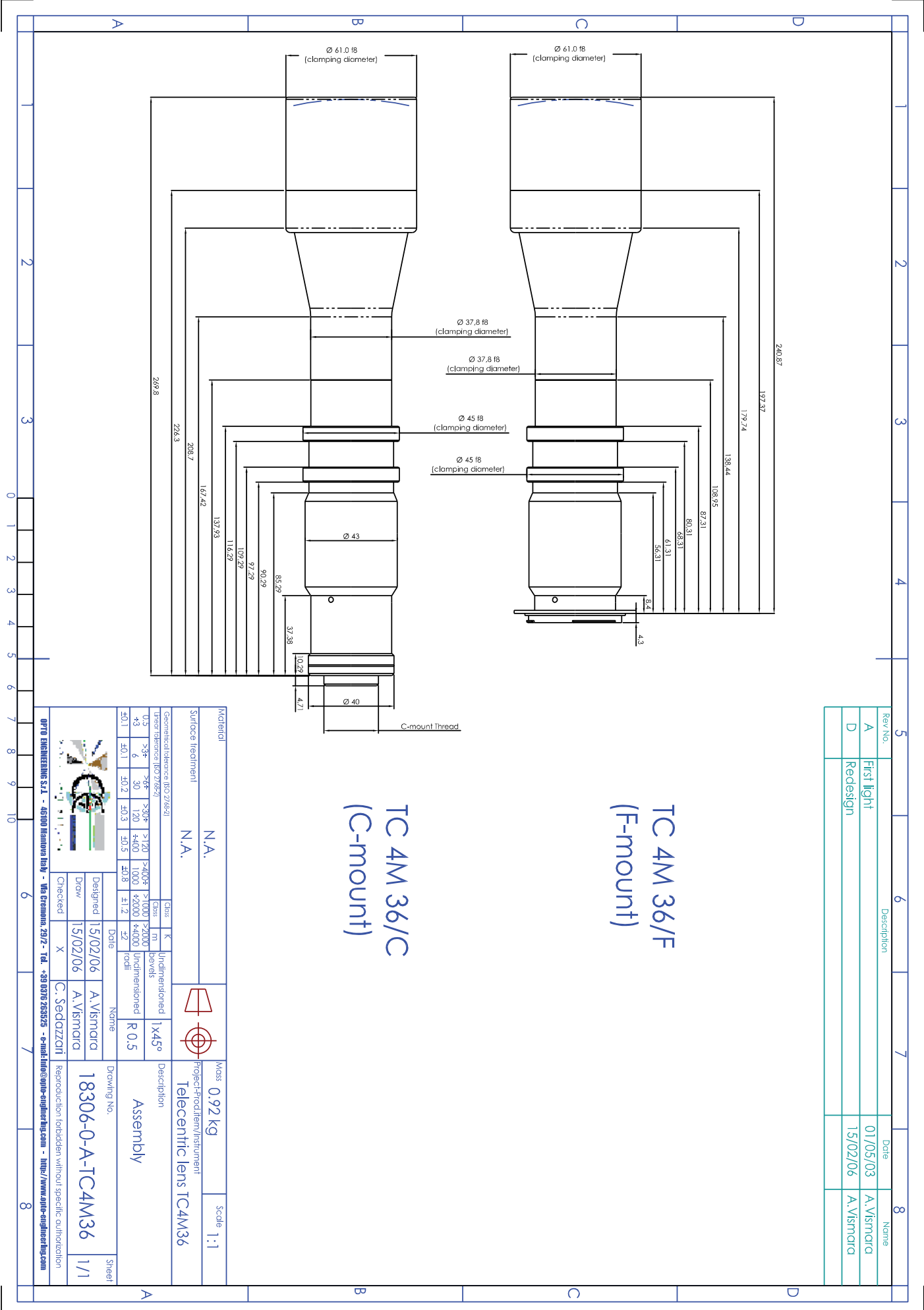


**Collimated/Telecentric illumination:**  
Compatible with LTCL36 illuminator;  
green light suggested.



**Clamping Mechanics:**  
Compatible with CMH036.

Mechanical drawings:  
see next page >>



Rev.No.	Description	Date	Name
A	First light	01/05/03	A. Vismara
D	Redesign	15/02/06	A. Vismara

TC 4M 36/F  
(F-mount)

TC 4M 36/C  
(C-mount)

Material		N.A.		Mass		0.92 kg		Scale		1:1	
Surface treatment		N.A.		Project-Froditem/Instrument		Telecentric lens TC4M36					
Geometrical tolerance (ISO 27682)		Class		K		Undimensioned		1x45°		Description	
Threat tolerance (ISO 27682)		m		mm		bevels		R 0.5		Assembly	
±0.3		>3*		>30*		>120		>400*		>1000	
+3		6		30		120		+400		1000	
±0.1		±0.1		±0.2		±0.3		±0.5		±0.8	
		±2		±2		total					
Designed		15/02/06		A. Vismara		Date		Name		Drawing No.	
Drawn		15/02/06		A. Vismara		Checked		X		C. Sedozzi	
Checked		X		C. Sedozzi		Reproduction forbidden without specific authorization				18306-0-A-TC4M36	
Sheet		1/1									

OPTO ENGINEERING S.r.l. - 40100 Bologna Italy - Via Cichonio, 29/2 - Tel. +39 051 265525 - e-mail: info@opto-engineering.it - http://www.opto-engineering.it